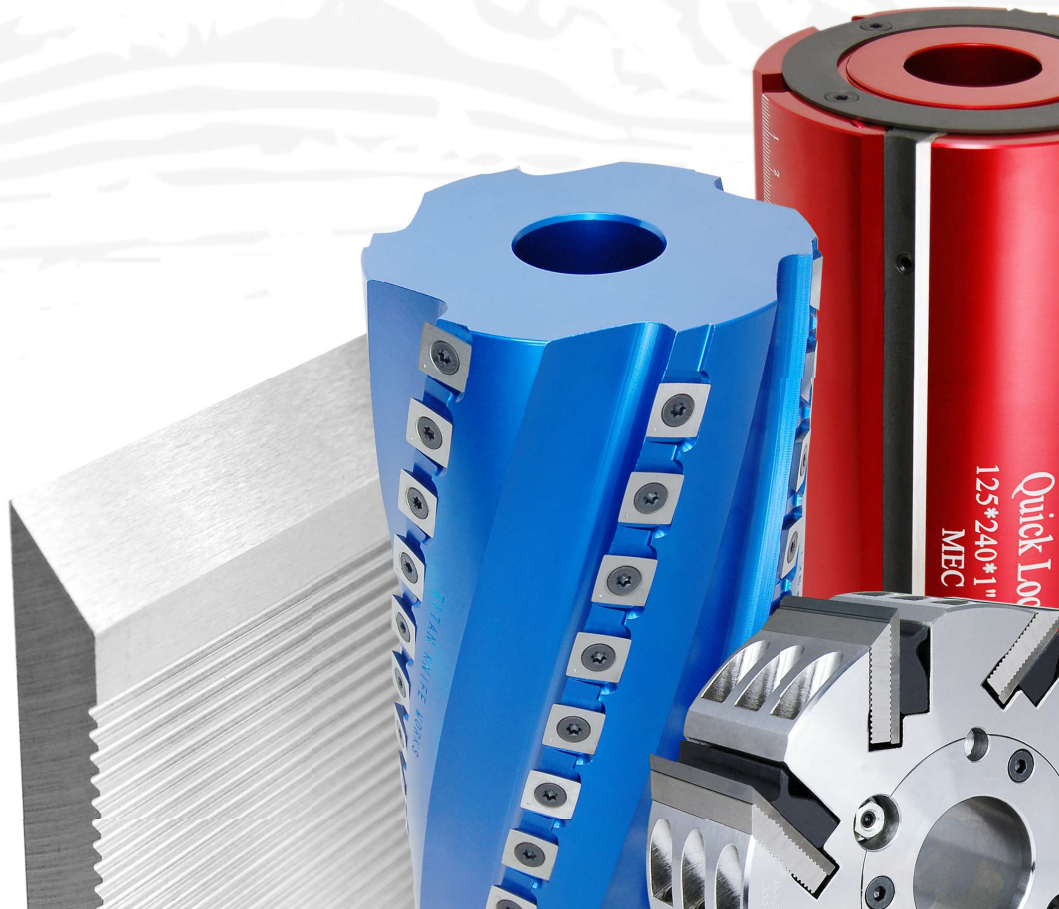




PRODUCT CATALOG

QUALITY TOOLS AND SUPPLIES FOR
THE MILLWORK INDUSTRY





/// PREMIUM QUALITY TOOLING /// GREAT VALUE

ABOUT US

Global Tooling is dedicated to making our customers successful!

We understand that today's millwork manufacturer must be more progressive than ever to survive. We can help you succeed by providing a large selection of high quality products with prompt delivery, all at the lowest possible price. We strive to provide quick, polite, and responsible technical service to all of your inquiries. We also offer experienced advice to help you produce the best possible product at the lowest possible cost.

All of our high quality products are 100% guaranteed from tested and well respected tooling and abrasive manufacturers that have earned our trust. We are able to offer some of the most competitive prices in the industry through volume purchasing and an efficient low overhead structure. Buying from us means you can rest assured that you receive fair prices on all the high quality items you use every day. We promise to work hard to be your key supplier on machine cutting tools, mill equipment, and grinding room supplies. Contact us today to learn how we can help you prosper.

WHAT WE OFFER

Tooling, Knives, and Saws

- Titan Knife Works - High Quality Moulder and Planer Tooling
- AceCo. Precision Mfg. - Finger Joint & Moulder Tooling
- Weinig, Wadkin, Leitz, Leuco, European Moulder Tooling, Tenon, Saw, and Shaper Tooling
- Hydro-Locking Sleeves and High Pressure Grease Guns
- Gladu Tools - Insert Knife Heads & Metric Cutting Tools
- Tigra, Ceratizit, and Sandvik - Carbide Knives, Blank Strips, Saw Tips, & More

Grinding Supplies

- Tyrolit, Norton, Radiac, Blackstone, etc. High quality grinding wheels & jointing stones.
- Northwest Super Abrasive - High value and high quality CBN and Diamond grinding wheels.

Machine Accessories and Grinders

- Finger joint machine parts for industrial finger joint systems.
- Apquip Corp. precision finger joint and edge gluing systems.
- Western Machinery Group finger joint machines and cutter head knife grinders.
- Western Roller machine feed tires and brush / brush bars.

Other Services

- We also represent 100 leading manufacturers with a full line of industrial supplies.
- Finger jointer, moulder, and planer machine consulting referral service.
- General machine work, re-grinding and sharpening services. Wire E.D.M work.
- Products backed by manufacturer's guarantee against material defects & workmanship.



AND PRODUCTS FROM THE WOOD FIBER GROUP





Global Tooling & Supply LLC
950 International Way
Springfield, OR 97477

Phone: (541) 302-1366
Fax: (978) 424-9063
Email: sales@globaltooling.net
www.globaltooling.com

CONTENTS

Moulder Knives and Planer Knives.....	4
Moulder Heads, Insert Tooling, and Wanner Grease Pumps.....	21
Grinding Wheels, Feed Tires, and Jointing Stones.....	44
Knife Grinder Tool Room Supplies.....	50
Saw Blades.....	54
Finger Joint Tooling and Finger Joint Machine Parts.....	56

TERMS AND CONDITIONS

C.O.D., Visa / MC, AE, or Open
Account - Net 30 days OAC.



Prices: Prices are in US \$ and subject to change. Past due open accounts are subject to a service charge of 1.5% per month of the unpaid amount, plus additional collection costs. Prices are FOB Springfield, Oregon or ship point and do not include shipping cost, packing, and handling fees. We maintain lean margins in order to offer competitive prices and our costs are affected by world steel commodity markets, so we reserve the right to change specifications, and prices without prior notice. In some cases we offer additional discounts for large volume orders – call with details on the specific opportunity.

Delivery: Most items are shipped FOB Springfield, OR 97477 USA or from the quoted ship point. Delivery dates are estimated and can be affected by raw material providers and freight service providers. We are not liable for additional costs for failure to meet the estimated delivery dates. Shipping damages need to be reported immediately and the shipping container needs to be kept for processing damage claims. A claim of missing items from a shipment must be reported within 30 days. U.S.P.S. Mail orders cannot be traced and if requested the buyer accepts all responsibility if they are not received. Free shipping denotes UPS Ground within the US to one destination on select items.

Custom Made Orders: Custom made items may be subject to a 50% deposit at the time of order and up to a 10% production overrun or shortage to cover scrapage during the manufacturing process. Cancellation of custom made orders may not be possible or may require a payment for the material and work already preformed. Minimum orders may be required on custom products to cover the cost to make machine fixtures or cover min. raw materials requirement by the producer.

Returns: Products returned require a RGA (returns good authorization number) to process the credit correctly. Returned products must be shipped prepaid and packaged to avoid knife chips, rusting, and other shipping damage and arrive in like new sellable condition. Returns may be subject to a re-stocking charge. No returns are allowed after 4 months because of our constant product improvements.

Warranty: Products are guaranteed by the manufactures against defects. Defective products must reported and returned within 60 days of receipt. Misused or neglected products void this warrant. Replacement products are shipped free via standard shipping methods. Warranty does not cover loss of labor or damage claims.

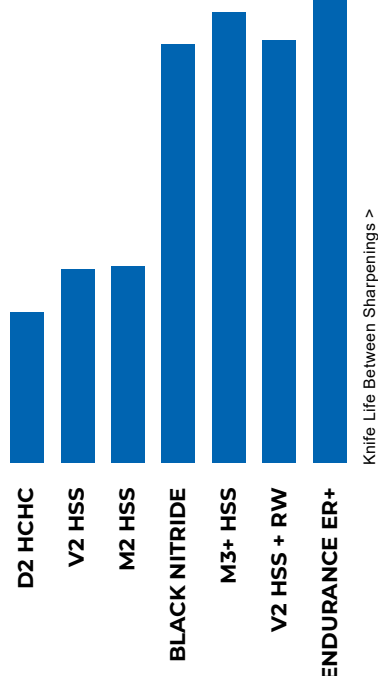
Safety: All products must be used in a safe manner to avoid death or serious injury. Do not exceed maximum R.P.M. ratings and safe tool limits for knife extension. Grinding dust from grinding wheels, jointing stones, knife steel, and carbide knives is potentially hazardous. Use adequate ventilation and OSHA approved respirators and gloves to avoid contact and from breathing coolant mist and dust when grinding. Wash hands after handling. Dispose of waste materials and coolant sludge according to governmental regulations.

KNIFE STEEL SELECTION & PERFORMANCE

/// PREMIUM QUALITY STEEL

We offer a wide selection of fine made knives for cutting nearly any type of wooden material. Our knives are made to exceed industry standard and provide trouble free long run performance even under heavy feed rates. We stock and sell tens of thousands of knives per year and our large sales volume allows us to offer unbeatable prices. Knives are true high grade A.I.S.I. mill run steels that are salt bath hardened and triple draw stress relieved for greater consistency. Knives are precision ground and corrugated on advanced CNC creep feed crush grinders for perfect bar to bar consistency.

STEEL PERFORMANCE



D2-HCHC — D2 High Carbon and High Chrome (AISI) knives offer the best value for many moulding producers and planer mills. With a Rockwell C hardness (HRC) of 58; it is easy to grind and resists nicks in knotty soft woods. D2 contains 12% chromium to resist chemical erosion when cutting wet cedar or redwood. Great for softwoods and shorter runs in hardwoods.

V2-HSS — V2 High Speed Steel has extra Vanadium for long life. V2 offers the same wear life and performance as M2-HSS, but at a lower cost. By increasing the levels of Vanadium to replace more expensive Molybdenum; we have developed a blend of steel with excellent tool life and the lowest price of any HSS on the market. V2 has a 63 HRC and is easy to profile shape. Great for most long runs in soft or hardwoods.

M2-HSS — True grade M2 High Speed Steel (AISI) steel offers 25% longer run times than D2-HCHC grade. Our Premium M2-HSS offers high levels of Tungsten (6% W), Molybdenum (5.5% Mo), and Vanadium (2.2%V). M2-HSS is hardened to 63 Rc for better wear resistance in harder woods. Great for long runs in most soft and hardwoods.

BLACK NITRIDE — BN High Speed Steel is our premium HSS with case hardened (carbon nitride) and black oxide to resist pitch build up. BN-HSS offers up to 100% tool life increases over standard HSS, without being harder to profile shape. BN-HSS features a long wearing cutting edge .010" deep that is more than 72 Rockwell C hardness. Much like Opti™ Knife. Great for long runs and stubborn hardwoods.

M3+ HSS — M3+ High Speed Steel offers up to 100% longer tool life over M2-HSS. This super alloy steel is great for long runs or on tough hardwoods. M3+ HSS contains high levels of Vanadium, Tungsten, Moly, and Chromium for extended wear life. Treated to 66 Rc hardness which is one of the hardest HSS offered.

V2-HSS +RW — Coated V2 High Speed Steel provides ultimate value and long tool life you have to try our RW coated knives. By applying the hard long wearing diamond dust chrome coating to the face of V2-HSS you can increase wear life 100% at a small additional cost. Our RW coating offers a 72 Rc hardness to the cutting edge which increases wear life without increasing your grinding time. The RW coating is a proprietary electroplating process that adds .001" thick chip resistant coating. This line of steel is great for most hardwoods and can triple tool life in wet woods that contain tannic acids (oak, cedar, redwood).

ENDURANCE ER+ — Our "Endurance" super run (ER+ Grade) moulder steel is the best option for extended production time and tool life. An excellent choice for cutting problem hardwoods and for super long production runs. Tool life is increased up to 800% over normal High Speed Steel without the inconvenience associated with using carbide knives. This proprietary knife coating process uses the latest technology developed in Europe for metal working tools. An ion sputtering magnetron chamber applies a P.V.D. (Physical Vapor Deposit); 6 layer film of Titanium, Ceramic crystals, and other elements to the knife surface to form an extremely hard and heat resistant cutting edge. The hardness of the coating is greater than 3500 HV – about twice as hard as C2 grade carbide, but because the coating is so thin, normal vitrified or CBN grinding wheels can be used to profile sharpen the knives. Great for short runs (500 to 1000 feet) cutting MDF, Teak, Ipe and even Angire. NOTE: To avoid removing the wear resistant coating, a wood block should be used to deburr the profiled knives instead of an abrasive slip stone.

CARBIDE — We offer many grades of carbide that wear more than 1,000% longer than M2-HSS – See [page 8](#) for more details.

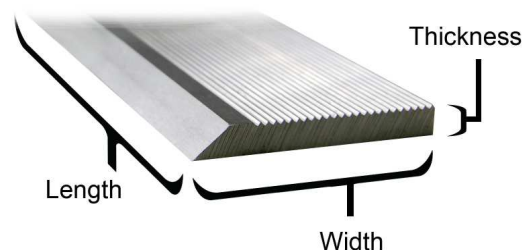
Coating Options:

- * RW Diamond Coat (72 Rc) HSS to double tool life.
- * Black Nitride / Carbonize (72 Rc) M2 or V2 to double life.
- * Flash Hard Chrome Coat (72 Rc) D2 or HSS to cut Wet Cedar & Redwood.

We offer premium knives at better prices and stock over 10,000 knives for same day shipping. Below are most of the common sizes of corrugated knife stock, however we can supply additional sizes and grades for your specific needs. We also offer made to order sizes and grades; call for details. In addition most knives can be treated or coated for extended wear life. Let us know how we can earn your business!

***Quantity Discounts Offered.**

Knives can be cut to length for a small fee.



Corrugated Back Moulder Knives

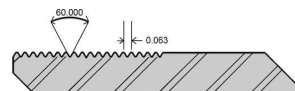
25" Length	D2-HCHC	V2-HSS™	M2-HSS	Black Nitride	M3+ HSS	V2-HSS + RW	Endurance ER+
Thick x Width	Part #	Part #	Part #	Part #	Part #	Part #	Part #
3/16" 1.50"	SCD18150	SCV2-18150				SCV2-18150D	
1.75"	SCD18175	SCV2-18175		SCB18175-		SCV2-18175D	
2.00"	SCD18200	SCV2-18200				SCV2-18200D	
1/4" 1.25"	SCD25125	SCV2-25125	SCM25125	SCB25125-		SCV2-25125D	
1.50"	SCD25150	SCV2-25150	SCM25150	SCB25150-	SCV25150	SCV2-25150D	
1.75"	SCD25175	SCV2-25175	SCM25175	SCB25175-	SCV25175	SCV2-25175D	
2.00"	SCD25200	SCV2-25200	SCM25200	SCB25200-	SCV25200	SCV2-25200D	
2.25"	SCD25225	SCV2-25225	SCM25225	SCB25225-	SCV25225	SCV2-25225D	
2.50"	SCD25250	SCV2-25250	SCM25250	SCB25250-	SCV25250	SCV2-25250D	
5/16" 1.25"		SCV2-31125	SCM311250	SCB31125-		SCV2-31125D	
1.50"	SCD31150	SCV2-31150	SCM31150	SCB31150-	SCV31150-	SCV2-31150D	SCSR-31150
1.75"	SCD31175	SCV2-31175	SCM31175	SCB31175-	SCV31175	SCV2-31175D	SCSR-31175
2.00"	SCD31200	SCV2-31200	SCM31200	SCB31200-	SCV31200-	SCV2-31200D	SCSR-31200
2.25"	SCD31225	SCV2-31225	SCM31225	SCB31225-	SCV31225	SCV2-31225D	SCSR-31225
2.50"	SCD31250	SCV2-31250	SCM31250	SCB31250-	SCV31250	SCV2-31250D	SCSR-31250
2.75"	SCD31275	SCV2-31275	SCM31275	SCB31275-	SCV31275	SCV2-31275D	SCSR-31275
3.00"	SCD31300	SCV2-31300	SCM31300	SCB31300-	SCV31300	SCV2-31300D	SCSR-31300
3.50"			SCM31350				

5/16" D2 is
Bottom Bevel

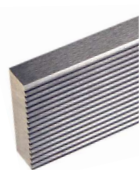
See Price
Sheets for
M3+RW Coated

See Price Sheets
for Bottom Bevel
V2-RW

Bevel face bottom option offered on D2-HCHC & V2-HSS+RW 5/16" corg. back knives. This allows for a greater pocket depth initially in Weinig & other German brand heads.



Filler Wedge & Backing Steel



Product	Description	Part #
Filler Wedge Steel:	1/4" Thick x 3/4" Tall x 25" Long	SCW251
	5/16" Thick x 1" Tall x 25" Long	SCW311
	10mm Thick x 1" Tall x 25" Long	SCW391
	* 60° Corg Hardened 5140. To fill empty corg knife pockets.	
Backing Steel:	1/8" Thick x 1" Tall x 25" Long 60° Corg. / Hardened 5140. To use smooth knives in corg. pockets.	SCB1251

See Page 38 for
pre-cut lengths
of filler wedge.

KNIFE-LOCK CARBIDE MOULDER KNIVES



Lower Prices & Longer Lengths

(Efficiently Manufactured to 310 mm long knife lengths)

High Strength C3 Micron Grain Carbide

(~400,000 PSI Transverse Rupture Strength, 1630 HV10 / 92 RA)

Knife-Lock is a high precision carbide moulder knife system for millwork manufacturers who cut glue lines, hardwoods, and Medium Density Fiberboards (MDF). **Knife-Lock** knives are compatible with your existing Wisconsin Knife Style steel backing plates. The carbide knife locks and indexes up on a corrugated High Speed Steel backing support plate as it is resharpened. Polished to mirror finish, our C3-Micro Grain carbide knives offer finer material wood finishes and longer production runs while providing longer diamond grinding wheel wear. The backing plates are a one time purchase, only replacement carbide knives are needed as they are sharpened away. Our carbide knives are also 100% compatible with your existing backing plates. Knives and backing plates are CNC ground on creep feed crush grinders for precise locking, closer balance tolerances from knife to knife, and less initial grinding. Compare our price, selection, quality, and our responsive order delivery and you will see why so many MDF millworkers use *Knife-Lock*.



Knife-Lock – Carbide Knife + Backing Plate

Cut Length (10mm thick)	38mm (1-1/2") High		50mm (2") High		60mm (2-3/8") High		70mm (2-3/4") High	
	Set Part #	Carbide Only Part #	Set Part #	Carbide Only Part #	Set Part #	Carbide Only Part #	Set Part #	Carbide Only Part #
20mm (.78")	US203	US203C	US205	US205C	US206	US206C	US208	US208C
30mm (1.18")	US303	US303C	US305	US305C	US306	US306C	US308	US308C
40mm (1.57")	US403	US403C	US405	US405C	US406	US406C	US408	US408C
50mm (1.96")	US503	US503C	US505	US505C	US506	US506C	US508	US508C
60mm (2.36")	US603	US603C	US605	US605C	US606	US606C	US608	US608C
70mm (2.75")	US703	US703C	US705	US705C	US706	US706C	US708	US708C
80mm (3.14")	US803	US803C	US805	US805C	US806	US806C	US808	US808C
90mm (3.54")	US903	US903C	US905	US905C	US906	US906C	US908	US908C
100mm (3.93")	US1003	US1003C	US1005	US1005C	US1006	US1006C	US1008	US1008C
110mm (4.33")	US1103	US1103C	US1105	US1105C	US1106	US1106C	US1108	US1108C
120mm (4.72")	US1203	US1203C	US1205	US1205C	US1206	US1206C	US1208	US1208C
130mm (5.11")	US1303	US1303C	US1305	US1305C	US1306	US1306C	US1308	US1308C
140mm (5.51")	US1403	US1403C	US1405	US1405C	US1406	US1406C	US1408	US1408C
150mm (5.90")	US1503	US1503C	US1505	US1505C	US1506	US1506C	US1508	US1508C
160mm (6.29")	US1603	US1603C	US1605	US1605C	US1606	US1606C	US1608	US1608C
170mm (6.69")	US1703	US1703C	US1705	US1705C	US1706	US1706C	US1708	US1708C
180mm (7.08")	US1803	US1803C	US1805	US1805C	US1806	US1806C	US1808	US1808C
190mm (7.48")	US1903	US1903C	US1905	US1905C	US1906	US1906C	US1908	US1908C
200mm (7.87")	US2003	US2003C	US2005	US2005C	US2006	US2006C	US2008	US2008C
210mm (8.26")	US2103	US2103C	US2105	US2105C	US2106	US2106C	US2108	US2108C
220mm (8.66")	US2203	US2203C	US2205	US2205C	US2206	US2206C	US2208	US2208C
230mm (9.05")	US2303	US2303C	US2305	US2305C	US2306	US2306C	US2308	US2308C
240mm (9.45")	US2403	US2403C	US2405	US2405C	US2406	US2406C	US2408	US2408C
250mm (9.84")	US2503	US2503C	US2505	US2505C	US2506	US2506C	US2508	US2508C
310mm (12.2")	US3103	US3103C	US3105	US3105C	US3106	US3106C	US3108	US3108C

For backer only add "B" to set part #. To determine backer pricing, subtract the carbide price from the set price.

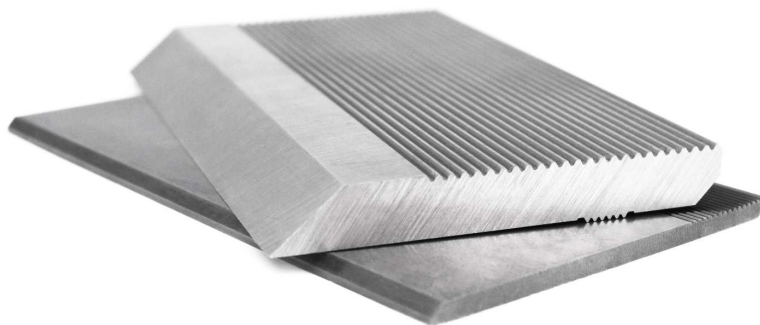
65mm Tall Knives also offered: Add 8% over 60mm wide prices.



GERMAN STYLE EURO-LOCK MOULDER KNIVES

The ultimate carbide moulder knife system for high production millworkers who cut Medium Density Fiberboard (MDF). **Euro-Lock** knives are compatible with your existing Weinig Knife or Leitz Style steel backing plates. Advantages over the competition include the use of a super strong C3 *Micro-Grain* carbide with higher hardness for longer production runs and our backing plates are the only ones made from high grade M2-High Speed Steel for greater carbide support. Our competitors use softer steel backers that can bend & require additional deburring. Our backers have extended corrugations to allow the backer to be raised up in the knife pocket for additional resharpenings.

Euro-Lock knives and backing plates are CNC ground on the latest crush grinders for greater accuracy, precise index locking, & closer balance tolerances with polished knife faces to a mirror finish to improve the edge sharpness that results in finer material finishes in MDF. Our knives offer the best choice for reliable trouble free performance.



Lower Prices

Factory Direct sales. If you can find a lower price we will beat it! Qty. Discounts Offered!

Larger Selection

Special widths up to 70mm and Lengths up to 300mm (11.81")

Quick Delivery

Most orders ship the same day if ordered by 12:00 PST

Experienced Technical Support

Low Cost Knife Profiling services, special grinding wheels (pg. 45) and more.

Euro-Lock – Carbide Knife + Backing Plate

Cut Length	38mm (1-1/2") High			50mm (2") High			60mm (2-3/8") High		
	Set Part #	Carbide Only Part #	Backer Only Part #	Set Part #	Carbide Only Part #	Backer Only Part #	Set Part #	Carbide Only Part #	Backer Only Part #
40mm (1.57")	ES403	ES403C	ES403B	ES405	ES405C	ES405B	ES406	ES406C	ES406B
60mm (2.36")	ES603	ES603C	ES603B	ES605	ES605C	ES605B	ES606	ES606C	ES606B
80mm (3.14")	ES803	ES803C	ES803B	ES805	ES805C	ES805B	ES806	ES806C	ES806B
100mm (3.93")	ES1003	ES1003C	ES1003B	ES1005	ES1005C	ES1005B	ES1006	ES1006C	ES1006B
130mm (5.11")	ES1303	ES1303C	ES1303B	ES1305	ES1305C	ES1305B	ES1306	ES1306C	ES1306B
150mm (5.90")	ES1503	ES1503C	ES1503B	ES1505	ES1505C	ES1505B	ES1506	ES1506C	ES1506B
180mm (7.08")	ES1803	ES1803C	ES1803B	ES1805	ES1805C	ES1805B	ES1806	ES1806C	ES1806B
230mm (9.05")	ES2303	ES2303C	ES2303B	ES2305	ES2305C	ES2305B	ES2306	ES2306C	ES2306B
300mm (11.81")	ES3003	ES3003C	ES3003B	ES3105	ES3105C	ES3105B	ES3106	ES3106C	ES3106B

We also offer many other cutting lengths, and 70mm high carbide for deep profiles. Call for more details. Knives are now offered with an optional "Thin Film Diamond" Coating (**PCD-CVD**) for 30% higher price. PCD diamond coating increases wear life up to 4 times. Compare our price, selection, quality, and our responsive order delivery and you will see why so many MDF millworkers use *Euro-Lock*.

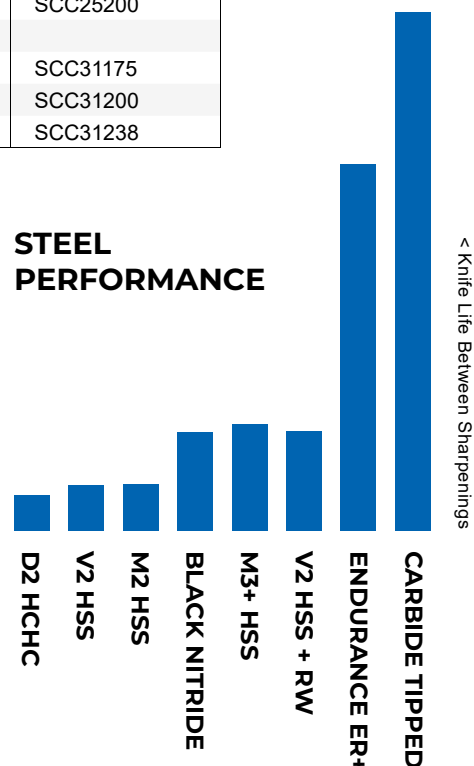
CARBIDE INLAY MOULDER & PLANER KNIVES

Corrugated Back Carbide Inlay Moulder & Planer Knives				
25" Length		7/16" Inlay	9/16" Inlay	1" Inlay
Thick	Width	Part #	Part #	Part #
3/16"	1.50"	SCC18150		
1/4"	1.25"	SCC25125		
	1.50"		SCC25150	
	1.75"		SCC25175-15	SCC25175
	2.00"			SCC25200
5/16"	1.50"		SCC31150	
	1.75"		SCC31175-15	SCC31175
	2.00"			SCC31200
	2.38"		1-3/8" Inlay >	SCC31238

Knives can be cut to length for a small fee.

STEEL PERFORMANCE

Carbide runs up to 10 times longer than the best High Speed Steels. Great for hardwoods, long run surfacing, and MDF profiles. We offer a complete line of stock and custom made carbide knives, solid carbide strips, Indexable carbide, and Micro-Grain carbide inserts or turnable blades for most cutter head styles. For grinding we even developed special CDX Diamond grinding wheels for sharpening carbide inlay knives. Standard Knives are offered in Corrugated back (60°) and Smooth back planer knives. Pre-ground / Profiled Moulder knives (wire EDM or Profile ground) are offered to save you time. Knives below are stocked in long bars but can be cut to length as needed.



Smooth Back Carbide Inlay Moulder / Planer Knives

25" Length		7/16" Inlay	9/16" Inlay
Thick	Width	Part #	Part #
1/8"	5/8"	SBC2563125	
	11/16"	SBC250688125	
	3/4"	SBC2575125	
	7/8"	SBC25875125	
	1"	SBC251125	
	1-1/8"	SBC251125125	
	1-3/16"	SBC25111825	
	1-1/4"	SBC25125125	
	1-3/8"	SBC25138125	
5/32"	1-3/8"	SBC25138156	
	1-1/2"		SBC25151515
	1-3/4"	24" Length >	SBC25175156

C3-Micro-Grain SOLID CARBIDE STRIPS (STB)

Call for price on made to order strip sizes. Carbide strips used for moulding abrasive materials and glue lines. Offered in C2, C3, and C4 grades depending on your needs. Limited stock. Diamond cut-off wheels also offered (NCD1A1CO) 10" x 1/16" x 1.25" bore.

SMOOTH BACK MOULDER & PLANER STEEL

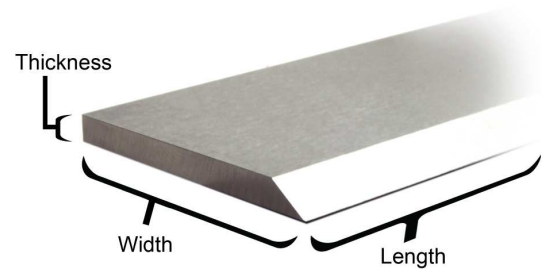
Smooth Back Moulder & Planer Knives

		31" V2-HSS	36" V2-HSS
Thick	Width	Part #	Part #
1/8"	5/8"	SBV126251	SBV12625
	11/16"	SBV126881	SBV12688
	3/4"	SBV127501	SBV12750
	13/16"	SBV128131	SBV12813
	7/8"	SBV128751	
	1"	SBV121001	SBV12100
	1-1/8"	SBV1211251	SBV121125
	1-3/16"	SBV121881	SBV12188
	1-1/4"	SBV121251	SBV12125
	1-3/8"	SBV121381	SBV12138
	1-1/2"	SBV121501	SBV12150
	2"	SBV12200	
		40" D2-HCHC	40" M2-HSS
Thick	Width	Part #	Part #
5/32"	1-1/2"	SBD15150-40	SBM15150-40
	1-3/4"	SBD15175-40	SBM15175HT-40
		31" D2-HCHC	31" HSS
Thick	Width	Part #	Part #
5/32"	1-1/4"	SBD15125	SBV15125
	1-1/2"	SBD15150	SBV15150
	1-3/4"	SBD15175-HT	SBV15175
	2"	SBD15200-HT	SBV15200
	2-1/4"	SBD15225	SBM15225HT
	2-1/2"	SBD15250	SBM15250HT
	3/16"		SBM18175
	2"		SBM18200
3/16"	1-3/4"		SBM18225
	2"		SBM18250
2-1/4"			
	2-1/2"		
		25" D2-HCHC	25" HSS
Thick	Width	Part #	Part #
3/16"	1/3/4"		SBM18175-25
	2"		SBM18200-25
1/4"	1-1/4"		SBM25125
	1-1/2"		SBM25150
	1-3/4"		SBM25175250
	2"		SBM25200250 *
	2-1/4"		SBM25225250 *
	2-1/2"		SBM25250 *
	2-3/4"		SBM25275
5/16"	4"	SSD32400	

Titan High End Stock!

We offer a wide selection of precision made smooth back moulder knives and planer knives. Standard grades and sizes shown, but made to order sizes are offered as needed. Square edge and bevel edge moulder knives are stocked in the wider sizes for hand grinding. Long bars can be cut to length & balanced in head sets.

Knives can be cut to length for a small fee.



Bevel Edge.
Square Edge
also available.

Bevel Edge

*Square Edge
also available.

Square Edge.

PLANER & JOINTER KNIFE SETS

We offer a large selection of high quality planer and jointer knife sets in HSS and TCT Carbide tipped (10mm wide tips). **See page 13 for Electric Handheld Planer Knives.**

**Planer Knife Setter
P/N: KSG-100**



Length	Width	Thick	V2-HSS Part #	Carbide Tipped Part #	Knives in Set	Fits Planer / Jointer
4"	5/8"	3/32"	SVB462509375		3	Delta 37-290, Walker-Turner
4"	5/8"	1/8"	SVB4625125	SBC4625125	3	Atlas, Boice Crane, Old Craftsman, Jet JJ-4 & Similar Jointers
4-1/8"	11/16"	1/16"	SVB41256880625		3	Craftsman 113.21862
4-1/8"	7/8"	1/8"	SVB4125875125		2	Older Craftsman 149.236220, 149.236221, 149.236223 (3 Slotted Holes)
4-1/4"	3/4"	1/8"	SVB42575125		3	Older Craftsman Jointer
4-3/8"	5/8"	1/8"	SVB43756255125		3	Older Craftsman Jointer 103.23220
4-3/8"	11/16"	1/8"	SVB4375688125	SBC4375688125	3	Older Craftsman Jointer 103.20670, 103.21820, 103.23340
5-3/16"	7/8"	2mm	SVB519875078		2	Older Craftsman Jointer 149.236320 (3 Slotted Holes)
6"	5/8"	1/8"	SVB6625125	SBC6625125	3	Delta 6", TTL, Boice Crane, Craftsman, Rockwell, Jet JJ-6 Sunhill, Woodtek, Most Imports
6"	5/8"	1/8"	SVB6625125-4		4	Boice Crane
6"	16.5mm	2.7mm	PKH-14803		3	6" Delta 37-195, Delta 37-275X & Delta 37-190
6"	3/4"	1/8"	SVB675125	SBC675125	3	Powermatic 50, Crescent, Atlas
6"	1"	1/8"	SVB61125	SBC61125	3	Grizzly G6697
6-1/16"	5/8"	1/8"	SVB6-1/1662512	SBC6062625125	3	Older Powermatic 54A (No Holes), Jet JJ-6
6-1/16"	3/4"	1/8"	SVB6-1/1675125	SBC6-1/1675125	3	Delta, Walker-Tuner, Wallace
6-1/16"	13/16"	1/8"	SVB6062812125	SBC6062812125	3	Delta DJ-15, 37-154 & Similar 6" Jointers
6-1/16"	7/8"	5/64"	PKH-14813		3	6" Newer Powermatic 54A & Jet JJ-6CSDX (Double Edge, with Holes)
6-1/8"	5/8"	3/32"	SVB6125625093		3	Delta 37-658, 37-205, 37-220, 37-195, 37-190 Jointers, Rockwell 37-280
6-1/8"	5/8"	1/8"	SVB6125625125		3	Craftsman
6-1/8"	11/16"	1/8"	SVB6125688125	SBC6125688125	3	Jet, Ridgid JP0610
6-3/16"	7/8"	1/16"	PKH-14801		2	6" Delta 37-070 & Delta JT160 (with Holes)
6.22"	7/8"	0.070"	PKH-14815		2	6" Craftsman 351.217880 & 351.286300 (with Holes)
7"	5/8"	1/8"	SVB7625125		3	
8"	5/8"	1/8"	SVB8625125	SBC8625125	3	Delta 8", TTL, Boice Crane, Rockwell, Powermatic 60, Jet JJ-8, Woodtek, Most Imports
8"	3/4"	1/8"	SVB875125	SBC875125	3	Jet JJ-8 Jointer, Powermatic 60, Pryor, Sunhill
8"	3/4"	1/8"	SVB875125-4	SBC875125B	4	Bridgewood, Grizzly 8"
8"	7/8"	1/8"	SVB8875125	SBC8875125	3	Older Powermatic 60

PLANER & JOINTER KNIFE SETS

Length	Width	Thick	V2-HSS Part #	Carbide Tipped Part #	Knives in Set	Fits Planer / Jointer
8"	1"	1/8"	SVB81125	SBC81125	3	Grizzly G6698, Oliver, Shop Fox W1684
8-1/16"	5/8"	3/32"	SVB80626093		3	Delta 37-315, Yates, J-Line
8-1/16"	5/8"	1/8"	SVB8-1/16625125		3	Delta
8-1/16"	3/4"	1/8"	SVB8-1/1675125	SBC8-1/16675125	3	Sunhill Machinery
8-1/16"	13/16"	1/8"	SVB8062812125	SBC8062812125	3	Delta DJ-20, 37-365 & Similar
10-1/4"	11/16"	1/8"	SVB10687125-2		2	Grizzly G0675, Central Machine S-6935
11-13/16" 300mm	25/32" 20mm	1/8" 3mm	SVB1278118		2	Logosol PH260
12"	5/16"	5/64"	PKH-12832		2	12" Makita Model 2012 (Double Edge)
12"	15/32"	1/16"	PKH-12804		2	12" Craftsman 21722, Central Machinery 95082 (Double Edge)
12"	3/4"	1/8"	SVB1275125	SBC122575125	3	Grizzly G6700
12"	7/8"	1/8"	SVB12875125	SBC12875125	3	Powermatic 100, Parks, Woodtek
12"	1"	1/8"	SVB121125	SBC121125	3	Craftsman
12"	1-1/4"	1/8"	SVB12125125	SBC12125125	3	Northfield, Oliver, Powermatic 1285
12"	1-1/4"	1/8"		SBC12125125-4	4	Northfield
12-1/4"	3/4"	1/8"	SVB122575125	SBC122575125	3	Boice Crane, Reliant, Wilke
12-1/4"	7/8"	1/8"	SVB1225875125	SBC1225875125	3	Powermatic 100
12-1/4"	1"	1/8"	SVB12251125	SBC12251125	3	Parks, Boice, Most European Combo Machines
12-15/32"	3/4"	1/16"	PKH-12810		2	12" Delta 22-540 & TP300 (Double Edge)
12-1/2"	15/32"	1/16"	PKH-12803		2	12-1/2" Delta 22-560, 22-565, TP305, TP400LS, Ryobi AP-12, Craftsman 21758, Grizzly G0663, Performax 240-3749, Porter Cable PC305TP, Powertec PL1250 (Double Edge)
12-1/2"	5/8"	1/8"	SVB12562525		3	Boice Crane
12-1/2"	11/16"	1/8"	SVB1250687125	SBC1250687125	3	RBI Model 812, Foley-Belsaw, Woodmaster 712, Jet
12-1/2"	45/64"	1/8"	PKH-12818		2	12-1/2" Craftsman 233780, Wilton 99178 & 34463, Rockwell RK9018, Jet 708813, JWP-12DX (Double Edge)
12-1/2"	3/4"	1/8"	SVB125075125-2	SBC125075125-2	2	Jet 708522, JWP 12-4P, Craftsman 233780
12-1/2"	3/4"	1/8"	SVB125075125	SBC125075125	3	Jet, Grizzly G1195, Wilke, Reliant, & Most 12" Imports
12-1/2"	7/8"	1/16"	PKH-12801	PKH-12801-C	3	12-1/2" DeWalt DW734 (HSS Double Edge, TCT is Single Edge, with Holes)
12-1/2"	1-1/16"	1/8"	PKH-12809		2	12-1/2" DeWalt DW733 (with Holes & Slots)
13"	1/2"	1/16"	PKH-12806		2	13" Ryobi AP1300, Order 2 Sets for 3 Knife Craftsman Model 21748 & 3 Knife Masterforce Model 2400045 (Double Edge, with Holes)
13"	3/4"	1/16"	PKH-12826		2	13" Ryobi AP1301, Ridgid TP1300 (old Global # PKH-12807) (Double Edge)

PLANER & JOINTER KNIFE SETS

Length	Width	Thick	V2-HSS Part #	Carbide Tipped Part #	Knives in Set	Fits Planer / Jointer
13"	7/8"	1/16"	PKH-12800	PKH-12800-C	3	13" DeWalt DW735 (HSS is Double Edge, Carbide Tipped is Single Edge, with Holes)
13-1/16"	5/8"	1/8"	SVB13062625125	SBC13063625125	3	Jet
13.071" 332mm	0.866" 22mm	0.065" 1.66mm	PKH-13100		2	13" Craftsman 351.217130 & 351.275190 (Double Edge, with Holes)
13-1/8"	15/32"	1/16"	PKH-12802		2	13" Delta 22-580, Grizzly G0689 (Double Edge, with Holes)
13-1/8"	15/32"	1/16"	PKH-12827		3	13" Delta 22-590, Steel City Model 40220 (Double Edge, with Holes)
13-1/8"	5/8"	3/32"	SVB13125625093		3	
13-1/8"	11/16"	5/32"	SVB131251116152		3	Delta 22-401 (No slots in knife.)
13-1/8"	1"	1/8"	SVB131251125	SBC131251125	3	Delta RC-33 & DC-33 13" Planer, Rockwell
13-3/8"	15/32"	1/16"	PKH-12828		3	13" Rigid R4331 & R4330 (Double Edge, with Holes)
13-5/8" 346mm	25/32" 20mm	1/8" 3mm	SVB1278136		2	Baker 412
15"	1"	1/8"	SVB151125	SBC151125A	3	Delta DC-380, Grizzly G6701, Reliant, Woodtek, TLL, Powermatic 15, Jet 708529G, JWP-15CS, JWP-15HO, Jet Knife #708807, JWP15HI-K, Most 15" Imports
15-1/16"	1"	1/8"	SVB15-1/161125		3	Delta 22-677
15-1/2"	5/8"	1/8"	SVB155625125		2	Craftsman 351.217450
15-1/2"	0.7"	1/8"	SCV1207-15.5		3	RBI Model 616 (Corrugated Back Planer Knives)
15-3/4"	1-3/16" 30mm	1/8" 3mm	SVB15751187125	SBC15751187125	4	SCMI
16"	1"	1/8"	SVB161125	SBC161125	3	Jet JWP16
16"	1-1/8"	1/8"	SVB161125125		4	Bridgewood, Crescent, Grizzly 16"
16"	1-1/4"	1/8"	SVB16125125	SBC16125125	3	Northfield 16HD
16-1/8"	7/8"	1/8"	SVB16125875125-2		2	Central Machine Auto Planer T39775
16-5/32" 410mm	25/32" 20mm	1/8" 3mm	SVB127816		2	Logosol PH260, Baker 412
16-3/16"	1-3/16" 30mm	1/8" 3mm	SVB161871187125	SBC161871187125	4	SCMI
16-1/4"	1-1/4"	5/32"	SVB1625125156	SBC1625125156	3	Powermatic 160
16-1/2"	11/16"	1/8"	SVB1650687125	SBC1650687125	4	RBI Model 816
18"	1-1/4"	5/32"	SVB18125156	SBC18125156	3	Powermatic
18-1/8"	1-1/8"	5/32"	SVB181251125156	SBC181251125156	3	Rockwell, Delta 22-212, Yates J180
18-1/4"	1-1/4"	5/32"	SVB1825125156	SBC1825125156	3	Powermatic180
18-1/2"	11/16"	1/8"	SVB1825687125	SBC1825687125	3	Woodmaster 718
20"	1"	1/8"	SVB201125	SBC201125	3	Grizzly, Northwood
20"	1"	1/8"	SVB201125A	SBC201125A	4	Parks, TLL 20", Jet 208, Northstate, Grizzly G6702, Powermatic 209, Sunhill
20"	1-1/8"	1/8"	SVB201125125	SBC201125125	4	Delta 20x9 Crescent, Many European Machines
20"	1-3/16"	1/8"	SVB201187125	SBC201187125	4	Delta 20" Planer, Grizzly 20" H7269, Many Imports

PLANER, JOINTER, & ELECTRIC HANDHELD KNIFE SETS

Length	Width	Thick	V2-HSS Part #	Carbide Tipped Part #	Knives in Set	Fits Planer / Jointer
20"	1-1/4"	1/8"	SVB20125125		3	Woodtek 20"
20-5/64" 510mm	25/32" 20mm	1/8" 3mm	SVB127820		2	Logosol PH360
20-3/16"	1-3/16"	1/8"	SVB201871187125	SBC201881187125	4	Delta DC-580
20-3/16"	1-3/8"	1/8"	SVB201871375125	SBC20188138125	4	Delta RC-51, 22-460, Phinero
20-1/4"	1-1/4"	5/32"	SVB2025125156	SBC2025125156	3	Powermatic 221
20-1/2"	11/16"	1/8"	SVB2050687125	SBC2050687125	4	RBI Model 820
20-1/2"	0.7"	1/8"	SCV1207-20.5		3	RBI (Corrugated Back Planer Knives)
20-1/2"	1-3/16" 30mm	1/8" 3mm	SVB20501187125	SBC20501187125	4	SCMI 520, 550, 552
20-1/2"	1-3/8"	1/8"	SVB205138125		4	
22-1/8"	1"	1/8"	SVB221251125		4	Powermatic 201
24"	1-1/4"	5/32"	SVB24125156	SBC24125156	4	Powermatic & Northfield
24-1/8"	1-3/16"	1/8"	SVB241251187125	SBC241251187125	4	Grizzly G6705
24-1/4"	1-1/8"	1/8"	SVB24251125125	SBC24251125125	3	Delta 22-470
24-1/4"	1-1/8"	1/8"	SVB24251125125-4	SBC24251125125-4	4	Crescent (Delta)
24-1/4"	1-1/4"	5/32"	SVB24125156-4		4	Powermatic 225
24-3/4"	1-1/8"	1/8"	SVB24751125125	SBC24751125125	3	Jet 24H
24-13/16"	1-3/8"	1/8"	SVB248121375125	SBC24813138125	4	Delta RC-63, 22-610
25"	11/16"	1/8"	SVB25687125	SBC25688125	3	Woodmaster 725
25"	1-1/4"	1/8"	SVB25125125		4	Powermatic
25"	1-3/8"	1/8"	SVB25138125		4	Pinheiro
25-3/16"	1-3/8" 35mm	1/8" 3mm	SVB251871375125	SBC25813138125	4	SCMI F630 & F535



We now offer knife sets for common handheld electric power planers from Makita, Bosch, Hitachi, Freud, Metabo, Skil, DeWalt, and Black & Decker. These knives may fit in some handheld power planers not listed. Please contact us for any additions or corrections on planer compatibility.

Handheld Electric Planer Knife Sets

Length	Width	Thick	Knives in Set	Part #	Grade	Fits Planer / Jointer
3-1/4" 82mm	13/64"	3/64"	2	PKH-12831	Carbide	Makita 1100, 1900B, N1900B, 1902, 1902X7, 1923B, N1923B, KP0810, KP0800K, OEM # D16966. Black & Decker 7696, 7698, 7698K, BD6500, 7698L, 79-699. Bosch PA1202, 1560, 1593, 1594, 1594K, 3296, 3365, 53518, 53514, PL1682. Craftsman 900173700. DeWalt DW6654, DW677, DW678, DW680, D26677K. Metabo HO0882. Porter Cable 367 Type 1, 9125. Ryobi HPL50K-30, HPL51K. Skil HD1555. (Double Edged) <i>Note: Set Plates for Old Makita or Old DeWalt Planer conversion not included.</i>
3-1/4" 82mm	1-3/32"	1/8"	2	PKH-12833	HSS	Hitachi P20SBK, P20SB. (Single Edge)
3-1/4" 82mm	1-1/8"	1/8"	2	PKH-12834	HSS	Makita 1100, 1900B, N1900B, 1923B, N1923B, OEM # 731001-4, DeWalt DW6655, DW677, DW678, and DW680K. (Single Edge)
3-1/4" 82mm	1-1/8"	1/8"	2	PKH-12835	Carbide Tipped	Makita 1100, 1900B, N1900B, 1923B, N1923B, OEM # 793007-0, DeWalt DW6655, DW677, DW678, and DW680K. (Single Edge)
4-3/8"	1-1/8"	1/8"	2	PKH-12836	HSS	Makita 1002BA, 1911B, 1912B, 1805B, OEM # 793008-8. (Single Edge)
6-1/8" 155mm	1-1/4" 32mm	1/8" 3mm	2	PKH-12839	HSS	Makita 1805B

TERSA™ BRAND KNIVES



**Genuine Swiss
Made**



Priced per knife.

**Sold and Packaged
in pairs.**



Tersa™ Style heads for Moulders &
Planers are also available.



Length	Chrome Part #	HSS Part #	M42 Part #	Carbide Part #
50 mm	TS-1940050	TS-1950050	TS-1956050	TS-1961050
60 mm	TS-1940060	TS-1950060	TS-1956060	TS-1961060
70 mm	TS-1940070	TS-1950070	TS-1956070	TS-1961070
80 mm	TS-1940080	TS-1950080	TS-1956080	TS-1961080
85 mm	TS-1940085	TS-1950085	TS-1956085	TS-1961085
90 mm	TS-1940090	TS-1950090	TS-1956090	TS-1961090
100 mm	TS-1940100	TS-1950100	TS-1956100	TS-1961100
110 mm	TS-1940110	TS-1950110	TS-1956110	TS-1961110
115 mm	TS-1940115	TS-1940115	TS-1956115	TS-1961115
120 mm	TS-1940120	TS-1950120	TS-1956120	TS-1961120
125 mm	TS-1940125	TS-1950125	TS-1956125	TS-1961125
130 mm	TS-1940130	TS-1950130	TS-1956130	TS-1961130
140 mm	TS-1940140	TS-1950140	TS-1956140	TS-1961140
150 mm	TS-1940150	TS-1950150	TS-1956150	TS-1961150
155 mm	TS-1940155	TS-1950155	TS-1956155	TS-1961155
160 mm	TS-1940160	TS-1950160	TS-1956160	TS-1961160
170 mm	TS-1940170	TS-1950170	TS-1956170	TS-1961170
180 mm	TS-1940180	TS-1950180	TS-1956180	TS-1961180
185 mm	TS-1940185	TS-1950185	TS-1956185	TS-1961185
190 mm	TS-1940190	TS-1950190	TS-1956190	TS-1961190
200 mm	TS-1940200	TS-1950200	TS-1956200	TS-1961200
210 mm	TS-1940210	TS-1950210	TS-1956210	TS-1961210
220 mm	TS-1940220	TS-1950220	TS-1956220	TS-1961220
230 mm	TS-1940230	TS-1950230	TS-1956230	TS-1961230
240 mm	TS-1940240	TS-1950240	TS-1956240	TS-1961240
250 mm	TS-1940250	TS-1950250	TS-1956250	TS-1961250
260 mm	TS-1940260	TS-1950260	TS-1956260	TS-1961260
265 mm	TS-1940265	TS-1950265	TS-1956265	TS-1961265
270 mm	TS-1940270	TS-1950270	TS-1956270	TS-1961270
280 mm	TS-1940280	TS-1950280	TS-1956280	TS-1961280
290 mm	TS-1940290	TS-1950290	TS-1956290	TS-1961290
300 mm	TS-1940300	TS-1950300	TS-1956300	TS-1961300
305 mm	TS-1940305	TS-1950305	TS-1956305	TS-1961305
310 mm	TS-1940310	TS-1950310	TS-1956310	TS-1961310
315 mm	TS-1940315	TS-1950315	TS-1956315	TS-1961315
320 mm	TS-1940320	TS-1950320	TS-1956320	TS-1961320
330 mm	TS-1940330	TS-1950330	TS-1956330	TS-1961330
340 mm	TS-1940340	TS-1950340	TS-1956340	TS-1961340
350 mm	TS-1940350	TS-1950350	TS-1956350	TS-1961350
360 mm	TS-1940360	TS-1950360	TS-1956360	TS-1961360
370 mm	TS-1940370	TS-1950370	TS-1956370	TS-1961370
380 mm	TS-1940380	TS-1950380	TS-1956380	TS-1961380
390 mm	TS-1940390	TS-1950390	TS-1956390	TS-1961390
400 mm	TS-1940400	TS-1950400	TS-1956400	TS-1961400
410 mm	TS-1940410	TS-1950410	TS-1956410	TS-1961410
420 mm	TS-1940420	TS-1950420	TS-1956420	TS-1961420
430 mm	TS-1940430	TS-1950430	TS-1956430	TS-1961430
440 mm	TS-1940440	TS-1950440	TS-1956440	TS-1961440
450 mm	TS-1940450	TS-1950450	TS-1956450	TS-1961450
460 mm	TS-1940460	TS-1950460	TS-1956460	TS-1961460
470 mm	TS-1940470	TS-1950470	TS-1956470	TS-1961470
480 mm	TS-1940480	TS-1950480	TS-1956480	TS-1961480
490 mm	TS-1940490	TS-1950490	TS-1956490	TS-1961490
500 mm	TS-1940500	TS-1950500	TS-1956500	TS-1961500
510 mm	TS-1940510	TS-1950510	TS-1956510	TS-1961510
520 mm	TS-1940520	TS-1950520	TS-1956520	TS-1961520
530 mm	TS-1940530	TS-1950530	TS-1956530	TS-1961530
540 mm	TS-1940540	TS-1950540	N/A	TS-1961540
550 mm	TS-1940550	TS-1950550	N/A	TS-1961550
560 mm	TS-1940560	TS-1950560	N/A	TS-1961560
570 mm	TS-1940570	TS-1950570	N/A	TS-1961570
580 mm	TS-1940580	TS-1950580	TS-1956580	TS-1961580
590 mm	TS-1940590	TS-1950590	TS-1956590	TS-1961590
600 mm	TS-1940600	TS-1950600	TS-1956600	TS-1961600
610 mm	TS-1940610	TS-1950610	TS-1956610	TS-1961610
620 mm	TS-1940620	TS-1950620	TS-1956620	TS-1961620
625 mm	TS-1940625	TS-1950625	TS-1956625	TS-1961625
630 mm	TS-1940630	TS-1950630	TS-1956630	TS-1961630
635 mm	TS-1940635	TS-1950635	TS-1956635	N/A
640 mm	TS-1940640	TS-1950640	TS-1956640	TS-1961640

CENTROLOCK™ STYLE & TERMINUS™ STYLE KNIVES



See page 26 for heads.



CentroLock™ Style Knives

16mm Wide x 3mm Thick

	T1-HSS	Carbide
Length	Part #	Part #
60mm	CL-60T	CL-60C3
90mm		CL-90C3
100mm	CL-100T	CL-100C3
120mm		CL-120C3
130mm	CL-130T	CL-130C3
150mm	CL-150T	CL-150C3
170mm		CL-170C3
180mm	CL-180T	CL-180C3
190mm	CL-190T	CL-190C3
230mm	CL-230T	CL-230C3
240mm	CL-240T	CL-240C3
270mm	CL-270T	CL-270C3
285mm		CL-285C3
300mm	CL-300T	CL-300C3
310mm	CL-310T	
460mm		CL-460C3
464mm	CL-464T	
480mm		CL-480C3
635mm	CL-635T	
700mm	CL-700T	

Love the quick change planer/moulder knife heads but hate the expensive replacement planer blades? We are here to help. We offer an alternate high precision, low cost supply of knives for Weinig/Leitz™, Centro-lock™ and Terminus™ style cutter heads. No volume buy-in's (like the other guys) to reach a price level, just a great price on any quantity.

Offered in both **T1-HSS and Micro-Grain C3 Carbide** knives for 10 times the life. Precision knives made by Titan Knife Works. Exact fitting and smoother surface finishes.



Contact us for custom head inquiries.

Terminus™ Style Knives

14mm Wide x 2.55mm Thick

	T1-HSS	Carbide
Length	Part #	Part #
50mm	TK-50T	TK-50C3
60mm	TK-60T	TK-60C3
70mm		TK-70C3
80mm	TK-80T	TK-80C3
90mm	TK-90T	
100mm	TK-100T	TK-100C3
120mm	TK-120T	TK-120C3
130mm	TK-130T	TK-130C3
140mm	TK-140T	
150mm	TK-150T	TK-150C3
160mm	TK-160T	TK-160C3
170mm	TK-170T	
180mm	TK-180T	TK-180C3
190mm	TK-190T	TK-190C3
200mm	TK-200T	TK-200C3
220mm	TK-220T	
230mm	TK-230T	TK-230C3
240mm	TK-240T	TK-240C3
250mm	TK-250T	
260mm	TK-260T	TK-260C3
270mm	TK-270T	TK-270C3
280mm	TK-280T	
300mm	TK-300T	TK-300C3
310mm	TK-310T	TK-310C3
320mm	TK-320T	
330mm	TK-330T	TK-330C3
340mm	TK-340T	TK-340C3
420mm	TK-420T1	
460mm	TK-460T1	TK-460C3
464mm	TK-464T1	
514mm	TK-514T1	
520mm	TK-520T1	
540mm		TK-540C3
616mm	TK-616T	
635mm	TK-635T	
640mm	TK-640T	
700mm	TK-700T	

Call for other sizes.

Combo Knife

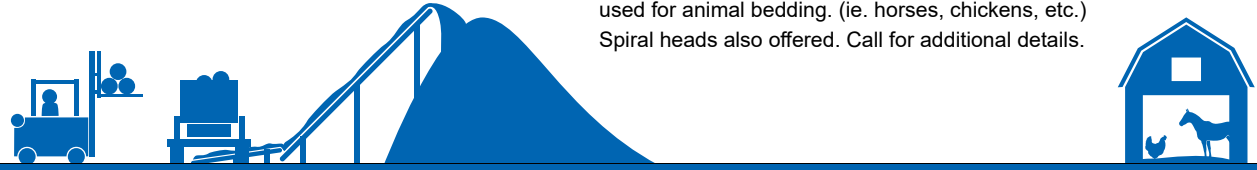
Fits Weinig™ Combo Head

Length	Part #
230mm	TK-P1598A-230

Solid Carbide - 8mm Wide x 1.5mm Thick.
Made by Titan Knife

WOOD SHAVINGS MILL, FEEDER, & COMBING KNIVES

We offer knife blades for producing wood shavings used for animal bedding. (ie. horses, chickens, etc.) Spiral heads also offered. Call for additional details.



Wood Shavings Mill Knives

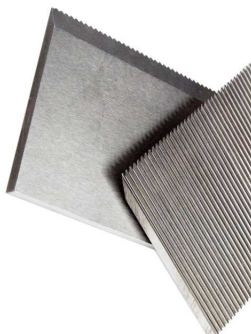
Thick	Width	Length	Description / for Machine	Bevel	Part #
1/4"	1.50"	20"	D2 Corrugated for Salsco	40°	SCD25150-20
1/4"	1.50"	20"	D2 Corrugated for Salsco	30°	SCD25150-20-30B
1/4"	1.50"	30"	D2 Corrugated for Salsco	40°	SCD25150-30
1/4"	1.50"	30"	D2 Corrugated for Salsco	30°	SCD25150-30-30B
5/32"	1.50"	20"	D2 Smooth for Douglas	30°	SBD15150-20
5/32"	1.50"	30"	D2 Smooth for Douglas	30°	SBD15150-30
5/32"	1.50"	40"	D2 Smooth for Douglas, N.W.	30°	SBD15150-40
5/32"	1.625"	27.75"	D2 Smooth for Jackson	30°	SBD151625-27.75
5/32"	1.75"	27.75"	D2 Smooth for Jackson	30°	SBD15175-27.75
5/32"	2"	15"	D2 Smooth for Newman Whitney	30°	SBD15215
5/32"	2"	19.875"	D2 Smooth for Jackson	30°	SBD15200-19.875
5/32"	2"	22.5"	D2 Smooth for Jackson	30°	SBD15200-22.5
5/32"	2"	39"	D2 Smooth for Blue Diamond - with babbet slots	30°	SBD15239-B

We offer a variety of knives used to feed waste wood hog chippers. Also offered are standard and custom sizes to fit Precision, WPI, and other brand feeders.



D2 Feeder Knives

Thick	Width	Length	Bevel / Description	Part #
1/4"	2"	10-1/2"	30° Pole Peeler	SBD25210.5
1/4"	2"	14"	30° Pole Peeler	SBD25214
1/4"	2"	26"	37°	SBD25226
1/4"	2"	32"	37°	SBD25232



Combing Knives 16-90° (Rougher Knives)

Thick	Width	Length	Grade	Part #
5/32"	2"	20"	HSS Smooth Back	SBM15200-20-Comb
5/32"	2"	15"	HSS Smooth Back	SBM15215-Comb
5/32"	2"	13"	HSS Smooth Back	SBM15213-Comb
5/16"	1-3/4"	12"	M2 Corg. Back	SCM31175R

HIGH PRODUCTION PLANER BLADES



We stock a wide selection of precision made planer knives cut & packed in balanced sets. Our knives are salt bath heat treated for true consistent hardness and horizontal ground to a fine finish to provide a smoother wood surface. Standard 5/32" x 2" wide grades and stock lengths are shown below, call for additional grades and sizes like; Flash Chrome coated*, Black Nitride treated, and carbide tipped knives.

*Sand Blasting available. Surcharge & 10 week delivery apply.

*Hard wear layer coating option for wet woods is also available.

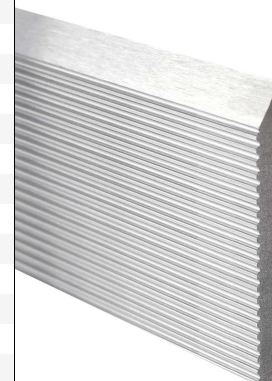
Top & Bottom Smooth Back Knives		
5/32" x 2" x Length	D2 Part #	M2 Part #
2-1/4"	SBD15202.25	
3"		SBM1523
4"		SBM1524
4-1/4"	SBD1524.25	SBM1524.25
4-1/2"	SBD1524.5	SBM1524.5
5"	SBD15205	SBM1525
5-1/8"	SBD15205.125	SBM1525.125
6"	SBD15206	SBM1526
6-1/8"	SBD15206.125	
6-1/4"	SBD15206.25	SBM1526.25
6-1/2"	SBD15206.5	SBM1526.5
6-3/4"	SBD15206.75	
7"	SBD1527	SBM1527
7-1/8"	SBD1527.125	SBM1527.13
7-3/16"	SBD1527.188	SBM1527.188
7-3/8"		SBM1527.375
7-1/2"	SBD1527.5	SBM1527.5
8"	SBD15208	SBM1528
8-1/2"	SBD1528.5	SBM1528.5
9"	SBD15209	SBM1529
10"	SBD15210	SBM15210
10-1/2"	SBD152010.5	
11"	SBD15211	
12"	SBD15212	SBM15212
13"	SBD15213	SBM15213
13-1/4"	SBD15213.25	SBM15213.25
14"	SBD15214	SBM15214
15"	SBD15215	SBM15215
16"	SBD15216	SBM15216
19-7/8"	SBD15200-19.875	
20"	SBD15200-20	SBM1520020
22-1/2"	SBD15200-22.5	
25"	SBD15200-25	SBM1520025
31"	SBD15200-HT	SBM15200HT
33-3/4"	SBD15200-33.75	



- **Balanced in Pairs**
- **30 Degree Bevel Edge**
- **Horizontal Finish Ground**
- **D2-HCHC (58 HRC Hardness)**
- **M2-HSS (62 HRC)**

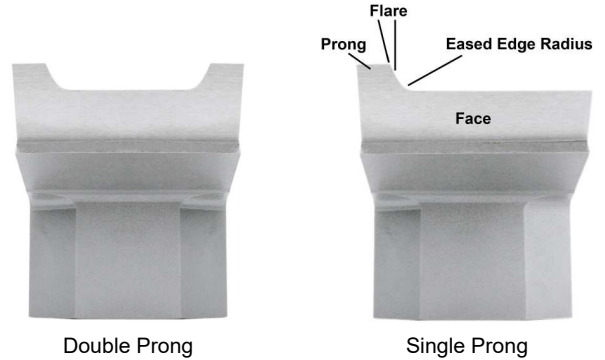
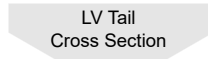
Thin Corg. (16-60°) Knives for Gilbert High Speed Planers				
Grade	Thickness	Width	Length	Part #
D2	5/32"	1-1/4"	8"	SCD15125-8
	5/32"	1-1/2"	12-1/2"	SCD1515-12.5
	5/32"	1-1/2"	15-1/2"	SCD1515-15.5
V2-RW	5/32"	1-3/4"	6-1/2"	SCD15175-6.5
	5/32"	1-1/4"	7-1/2"	SCV151257.5D-29
	5/32"	1-1/2"	8-1/2"	SCV15150-8.5
V2	5/32"	1-1/2"	12-1/2"	SCV15150-12.5
	5/32"	1-1/2"	15-1/2"	SCV15150-15.5
	5/32"	2"	8-1/2"	SCV152-8.5
D2	5/32"	2"	10-1/2"	SCV152-10.5
	5/32"	2"	12-1/2"	SCV152-12.5
	5/32"	2"	13"	SCV152-13
D2	1/4"	2"	6-1/2"	SCD25200-6.5
	1/4"	2"	10-1/2"	SCD25200-10.5
	1/4"	2"	12-1/2"	SCD25200-12.5

Knives for Gilbert High Speed Planers with 16-60 degree back corrugations in stock.



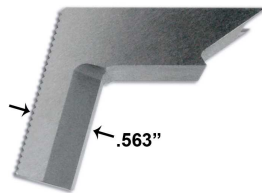
L & LV SIDE HEAD EASED EDGE KNIVES - STANDARD

We offer the highest quality L and LV eased edge side head planer knives at the lowest price. Made from high grade high Tungsten steel and salt bath heat treated for consistent hardness. All knife cutting surfaces are precisely ground to produce a smoother finish. After heat treating we finish grind the top, face, and eased edge radius sections of the knife for more accurate cutting than milled knives. Also, our knives are easier to setup and axial align in the cutter heads because both side edges are precision flush ground. Give us an opportunity on your next order; you won't be disappointed. **RW Coating now offered for extended life. Call for details.**



Double Prong

Single Prong



LV #4 Tail (Standard)



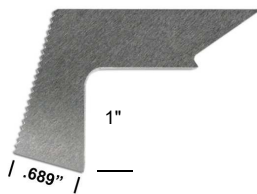
Thin Tail LV Knives
TT in Part #
(Gilbertech Style)
36-Knife Heads

LV Side Head Eased Edge Knives - Standard

Stock		1/8" Radius	3/16" Radius	1/4" Radius
Thickness	Knife	Part #	Part #	Part #
Double Prong	1" 2" Left			LVD250L
	1" 2" Right			LVD250R
	1" 2" Thin Tail Left			LVD250L-TT
	1" 2" Thin Tail Right			LVD250R-TT
	1-1/2" 2"	LVD125	LVD188	LVD250
	1-1/2" 2" Thin Tail	LVD125TT	LVD188TT	LVD250TT
	1-9/16" 2"	LVD125-1.562	LVD188-1.562	LVD250-1.562
	3-1/2" 4"		LVD188-4	LVD250-4
Single Prong	3-9/16" 4"		LVD188-3.562	
	2" + 2" Left	LVS125L	LVS188L	LVS250L
	2" + 2" Right	LVS125R	LVS188R	LVS250R
	2" + 2" Thin Tail Left			LVS250TT-L
	2" + 2" Thin Tail Right			LVS250TT-R
	3-1/2" 4" Left	LVS125L-4	LVS188L-4	
	3-1/2" 4" Right	LVS125R-4	LVS188R-4	

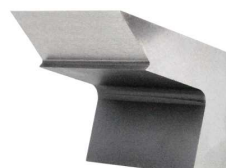
L Side Head Eased Edge Knives - Standard

Stock		1/8" Radius	3/16" Radius	1/4" Radius
Thickness	Knife	Part #	Part #	Part #
Double Prong	1" 2"			LD250-1
	1-1/2" 2"	LD125	LD188	LD250-2
Single Prong	2" + 2" Left	LS125L	LS188L	
	2" + 2" Right	LS125R	LS188R	
	3-1/2" 4" Left		LS188L-4	
	3-1/2" 4" Right		LS188R-4	



L #2 Tail (Standard)

Knives are balanced in sets at no extra charge.
Quantity discounts offered.



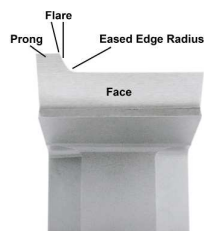
L & LV Jointer Knives

Tail	Cut Length	Part #
L	2"	LJ-2
LV	2"	LVJ-2
LV Thin Tail	2"	LVJ-2TT

CUSTOM EASED EDGE & PATTERN KNIVES

We offer custom made L or LV Tail style knives (bits) to produce any pattern with a cutting edge up to 6" long. Custom knives can be made to replace an old worn out knife or to match a wood sample or profile drawing. They are precision made to order from long wearing 12% Chromium grade D2-HCHC and hardened to 59 Rockwell C and can be produced normally within 3 weeks of drawing approval.

**Allow 3 to 4 weeks
for delivery.**



Single or Double Prong



Tongue, groove &
complex profiles



(Dove Tail Clamp)
Corrugated base.



For Yates Cutter Heads
Knives align themselves
by tightening down the
upper cutterhead disk.



For Gilbert Tech Planer
Heads. Allow 4 to 5
weeks for delivery.

Non-Stock Eased Edge L or LV Radius Knives

Knife Cut Length

1" to 1.75"
2"
2.25"
3"
4"
5"
6"
8"

Custom EDM Cut Patterns L or LV Knives

Knife Cut Length

1" to 1.75"
2"
2.25"
3"
4"
5"
6"

H-Style Knives

Knife Cut Length

1" to 1.75"
2"
2.25"

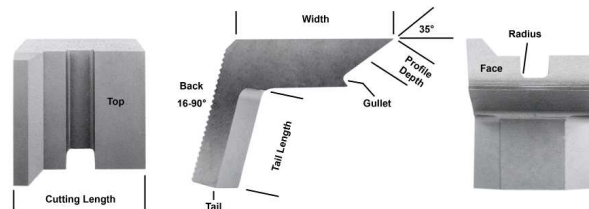
Vice Grip Style Knives

Knife Cut Length

1" to 1.75"
2"
2.25"
3"
4"

Gilbert Style Flat Corg. Back Eased Edge Knives

Size	Lumber	Radius	Part #
5/16" x 2" x 2"	1-1/2"	3/16"	LGD188
5/16" x 2" x 2"	1-9/16"	3/16"	LGD188-1.562
5/16" x 2" x 1-1/2"	1"	1/4"	LGD250-1
5/16" x 2" x 1-21/32"	1-5/32"	3/8"	LGD375-1.156
5/16" x 2" x 2"	Jointer Knife		LGJ-2

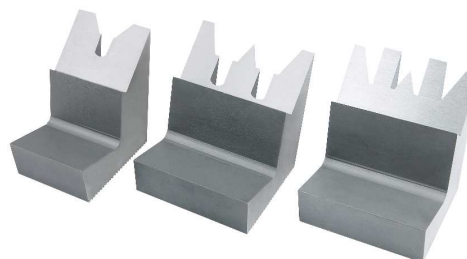


L or LV style knives can be easily face sharpened many times without losing the profile shape and they offer a stronger and more affordable cost than flat profile ground knives. Our knives are precision ground or wire EDM profiled to fine finish to provide consistent profile, a smoother finish over plain milled cutters, and are precision ground on each flat end to allow for precise elevation setting to ensure all knives in the head match.



The prices are calculated from the cutting edge length (L or LV Tail are the same price). Custom eased edge or profile knives are the same price. Call for price quotes on profiles over 1" deep and for special quantity discounts. We can produce taper milled knives to avoid resetting the knives after sharpening, or staggered milled profiles if you prefer. Staggered milled knives also available. A surcharge may apply.

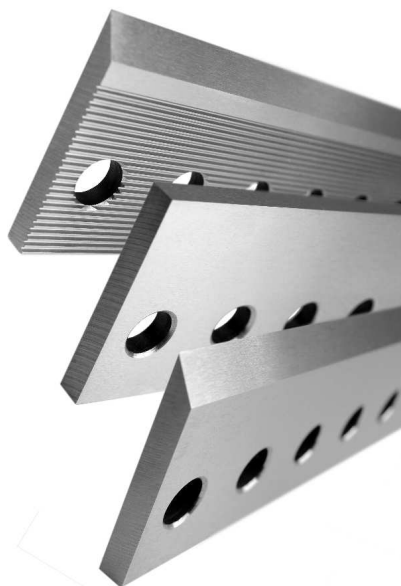
*** Call for Quantity Discounts**



Smooth version for old
Style Gilbert Knives.
Call for details.



WILLIAMS & HUSSEY MOULDER KNIVES & HEADS



Williams & Hussey Moulder Knives

25" Length		M2 Add 'B' for Bevel	V2 Add 'B' for Bevel	Black Nitride
Thick	Width	Part #	Part #	Part #
1/4"	1-3/4"	SWH-25175	SWHV-25175	SWH-25175BN-
	2"	SWH-25200	SWHV-25200	SWH-25200BN-
	2-1/4"	SWH-25225	SWHV-25225	SWH-25225BN-
	2-1/2"	SWH-25250	SWHV-25250	SWH-25250BN-
5/16"	2-3/4"	SWH-31275 (SQ)		
25" Length		M2 Corg 16-60°	V2 Corg 16-60°	Carbide Tipped 14" Length 30mm (1-3/16") Inlay
Thick	Width	Part #	Part #	Part #
1/4"	1-3/4"	SWH-25175C		
	2"	SWH-25200C	SWHV-25200C	
	2-1/4"	SWH-25225C	SWHV-25225C	
	2-1/2"	SWH-25250C	SWHV-25250C	
				SWH-25250-14-TCT

* Call for M2 3/16" Thickness.

Symbol Key

Square Edge	Bevel Edge	Corg. Back

Our customers tell us we offer the finest W&H moulder steel available. Accurate bolt hole locations that are CNC machined and 100% inspected to ensure perfect knife clamping. Fine horizontal surface finish allows for smoother cuts. Knives fit both Shop Fox and Williams & Hussey mini-moulders. V2-HSS used for long production in hardwoods and D2-HCHC softer steel grade for short runs and softwoods. BN great for long runs and stubborn hardwoods. Call for prices on profile ground knives to your exact pattern. 2-3/4" width may exceed capacity on some W.H. moulders. Corrugated back knives allow you to use your profiled Williams & Hussey knives in your shaper or moulder heads. Must have knife pockets at least 1-1/8" deep, to conceal holes, when using corrugated back knives.



2-Knife Moulder Heads for Williams & Hussey Knives

Body Diameter	Bore Size	Cutting Length	Part #
100mm	1-1/4"	4"	MHW-100-100
		6"	MHW-100-150
122mm	1-1/2"	4"	MHW-122-100-1.5
		6"	MHW-122-150-1.5
122mm	40mm	4"	MHW-122-100
		6"	MHW-122-150
137mm	1-13/16"	4"	MHW-137-100
		6"	MHW-137-150

We now offer a line of cutter heads that allow you to use your existing Williams & Hussey knives on your shaper or larger high speed moulder - no need to order two sets of knives for each. Use all your existing W&H knives in these heads to match the exact profiles without having to order more corrugated back knives. Heads accept knives up to 1/4" thickness, 6000 rpm max. Heads include 3/8" bolts -placed on 1.0" centers.



SUPERHELIC™ MOULDER HEADS & KNIVES



Head Prices Include
Set of HSS Knives



SuperHelic Straight Bore Heads

20° Cutting Angle / 18° Helical Angle / Right Hand Helix

Cut Length	OD	# of Knives	Part #
60mm	125mm	2	MSH125-2-60
100mm	125mm	2	MSH125-2-100
130mm	125mm	2	MSH125-2-130
150mm	125mm	2	MSH125-2-150
180mm	125mm	2	MSH125-2-180
230mm	125mm	2	MSH125-2-230
240mm	125mm	2	MSH125-2-240
310mm	125mm	2	MSH125-2-310
60mm	125mm	4	MSH125-4-60
100mm	125mm	4	MSH125-4-100
130mm	125mm	4	MSH125-4-130
150mm	125mm	4	MSH125-4-150
180mm	125mm	4	MSH125-4-180
230mm	125mm	4	MSH125-4-230
240mm	125mm	4	MSH125-4-240
310mm	125mm	4	MSH125-4-310

Made to Order- Delivery about 4 to 5 weeks.
Specify Bore When Ordering:
1-1/4", 40mm, 1-1/2", 1-13/16", 2-1/8", 50mm

SuperHelic Hydro Bore Heads

20° Cutting Angle / 20° Helical Angle / Right Hand Helix

Cut Length	OD	# of Knives	Part #
60mm	160mm	4	MSH160-4-60HL
100mm	160mm	4	MSH160-4-100HL
130mm	160mm	4	MSH160-4-130HL
150mm	160mm	4	MSH160-4-150HL
180mm	160mm	4	MSH160-4-180HL
230mm	160mm	4	MSH160-4-230HL
240mm	160mm	4	MSH160-4-240HL
310mm	160mm	4	MSH160-4-310HL
60mm	160mm	6	MSH160-6-60HL
100mm	160mm	6	MSH160-6-100HL
130mm	160mm	6	MSH160-6-130HL
150mm	160mm	6	MSH160-6-150HL
180mm	160mm	6	MSH160-6-180HL
230mm	160mm	6	MSH160-6-230HL
240mm	160mm	6	MSH160-6-240HL
310mm	160mm	6	MSH160-6-310HL

Made to Order- Delivery about 4 to 5 weeks.
Specify Bore When Ordering:
40mm, 1-1/2", 1-13/16", 2-1/8", 50mm



SuperHelic HSS Knives

Cut Length	Head OD	Part #
60mm	125mm	HK125-60-HSS
	160mm	HK160-60-HSS
100mm	125mm	HK125-100-HSS
	160mm	HK160-100-HSS
130mm	125mm	HK125-130-HSS
	160mm	HK160-130-HSS
150mm	125mm	HK125-150-HSS
	160mm	HK160-150-HSS
180mm	125mm	HK125-180-HSS
	160mm	HK160-180-HSS
230mm	125mm	HK125-230-HSS
	160mm	HK160-230-HSS
240mm	125mm	HK125-240-HSS
	160mm	HK160-240-HSS
310mm	125mm	HK125-310-HSS
	160mm	HK160-310-HSS



- Smoothest Finish
- Long Tool Life
- Easy To Use
- Easy To Sharpen
- Reduced Noise

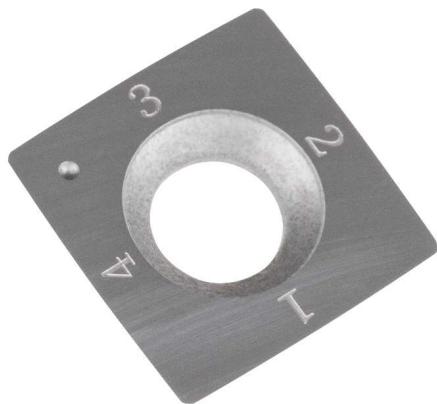
The Helical cutting action is the ultimate way to surface wood and will eliminate fuzzy and chipped out grain defects even in cross grain. The Helix is a continuous compound shear cutting action that slices the wood with low tool pressure. Our Super Helic heads use a simple one screw set gib design that wedges the corrugated HSS knives tightly using centrifugal force. All heads are currently right hand helix. New heads include a set of knives that are factory sharpened in the head for closer cutting concentricity. Knives can be re-sharpened many times.



Tool Rests for SuperHelic Knives

Grinder Model	Part #
Weinig	GP-100-HTR
Foley 75 / Western Nielsen (Carbide TR)	GP-100-FTR
Jeffer 330	GP-100-J330TR

CARBIDE INSERT KNIVES (ICK) - SQUARE

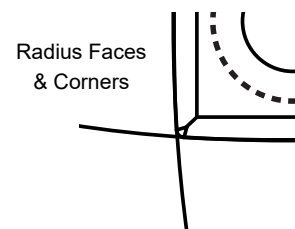
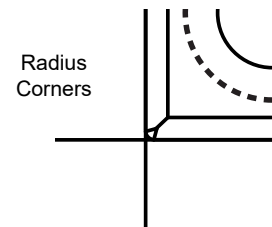
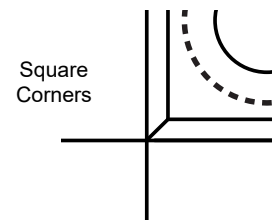


**10% Discount On
500+ Pc Orders!**

(Qty. Per Part #)

We offer a wide variety of sizes of square carbide insert knives for disposable knife insert cutterheads such as spiral / helical moulder heads, planer and jointer journal heads, and for custom tooling applications. We stock thousands of inserts for quick delivery to help you stay up and running. Inserts are made from long wearing C3 carbide and polished to a mirror finish for smoother cutting and longer tool life. Several of our popular square inserts have a turning dot for helping keep track of knife rotation in the head. Additional sizes not listed are available upon request. Several grades of carbide are also offered. Contact us for more details.

Carbide inserts priced each (10 per box).



Square Carbide Insert Knives (ICK)

Length	Insert Size Width	Thick	Part #	Bevel	Cutting Edges
12mm	12mm	1.5mm	IC-1512124	35°	4 Edges (Square Corners)
13mm	13mm	2.5mm	IC-2513134	35°	4 Edges (Square Corners)
14mm	14mm	2.0mm	IC-2014144	30°	4 Edges (Square Corners)
14mm	14mm	2.0mm	IC-2014144-RC	30°	4 Edges (Rounded Corners)
14.3mm	14.3mm	2.0mm	IC-2014142-SM	40°	2 Edges *Fits Steel City / ShinMax™ & Cutch¹
14.3mm	14.3mm	2.5mm	IC-2514.314.34	35°	4 Edges (Square Corners)
14.6mm	14.6mm	2.5mm	IC-25146146	30°	4 Edges (Square Corners)
14.6mm	14.6mm	2.5mm	IC-25146146-RC	30°	4 Edges (Rounded Corners)
14.6mm	14.6mm	2.5mm	IC-25146146-8R	30°	4 Edges (8 Radius = 4R Faces & 4R Corners)
15mm	15mm	2.5mm	IC-2515154-4	30°	4 Edges (Square Corners)
15mm	15mm	2.5mm	IC-2515154-4RC	30°	4 Edges (Rounded Corners)
15mm	15mm	2.5mm	IC-2515154-8R	30°	4 Edges (8 Radius = 4R Faces & 4R Corners)
15mm	15mm	2.5mm	IC-2515154-4100	30°	4 Edges 100mm (4") Radius Faces *Fits Byrd (BT)
15mm	15mm	2.5mm	IC-251515-DL	30°	Screw Included, 4 Edges, *Fits Titan Knife Lux Cut, Laguna Shear Tec II
17mm	17mm	2.0mm	IC-2017174	35°	4 Edges (Square Corners) 4mm Hole

¹ Fits Cutch Tool planer / jointer models: 40700H-CT, 4700HC-CT, 40100H-CT, 40600H-80100-CT, 40200H-CT, 40600HC-80100-CT, 40200HC-CT (spiral heads). Replaces Cutch knife # 40930 (HSS), 40938 (Carbide).

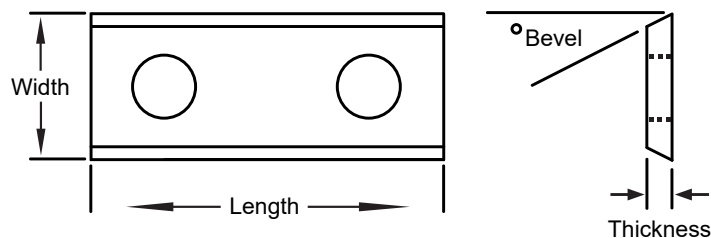
CARBIDE INSERT KNIVES (ICK) - RECTANGULAR



**10% Discount On
500+ Pc Orders!**

(Qty. Per Part #)

We offer a wide selection of rectangular carbide insert knives for disposable knife insert cutterheads. Contact us for additional sizes not listed. Several grades of carbide also offered - C3 standard. Polished to a mirror finish for smoother cutting and longer tool life.



Carbide inserts priced each (10 per box).

Rectangular Carbide Insert Knives (ICK)						
Length	Insert Size		Part #	Holes	Bevel	Cutting Edges
	Width	Thick				
7.5mm	12mm	1.5mm	IC-15127.5	1	35°	2 Edges
9.6mm	12mm	1.5mm	IC-15129.6	1	35°	2 Edges
15mm	12mm	1.5mm	IC-151215	1	35°	2 Edges
18mm	12mm	1.5mm	IC-151218	1	35°	2 Edges
19.5mm	12mm	1.5mm	IC-1512204	1	35°	4 Edges
20mm	12mm	1.5mm	IC-151220	1	35°	2 Edges
25mm	12mm	1.5mm	IC-151225-1	1	35°	2 Edges
25mm	12mm	1.5mm	IC-151225-2	2	35°	2 Edges
29.5mm	12mm	1.5mm	IC-1512304	2	35°	2 Edges
30mm	12mm	1.5mm	IC-151230	2	35°	2 Edges
30mm	12mm	1.5mm	IC-151230-BC	2	35°	2 Edges, 5° Bevel Corners
30mm	12mm	2.5mm	IC-251230	2	35°	2 Edges
30mm	12mm	2.5mm	IC-251230-BC	2	35°	2 Edges, 5° Bevel Corners
40mm	12mm	1.5mm	IC-151240	2	35°	2 Edges
49.5mm	12mm	1.5mm	IC-1512504	2	35°	4 Edges
50mm	12mm	1.5mm	IC-151250	2	35°	2 Edges
60mm	12mm	1.5mm	IC-151260	2	35°	2 Edges
80mm	13mm	2.2mm	IC-221380	2	35°	2 Edges
100mm	13mm	2.2mm	IC-2213100	2	35°	2 Edges
120mm	13mm	2.2mm	IC-2213120	2	35°	2 Edges

NEW!

TITAN LUX CUT III PLANER & JOINTER HEADS

The Lux Cut III spiral heads by Titan Knife are an excellent upgrade for planers and jointers. The design incorporates 4 edge carbide insert knives with a slight radius on the cutting face; set at a shear angle for better cutting and longer insert life. The unique insert design allows for simple and accurate installation and rotation.



BENEFITS

- In stock and ready to ship!
- Reduce noise – A 25 decibel average sound reduction is common.
- Reduce grain tear-out and fuzzing
- Low cost operation – Four sided carbide knives can last up to 50 times longer than standard steel blades.



Heads come with the inserts installed and ready to run. Also included: bearings, wrenches, spare knives (5-10) and spare screws (5-10).

Lux Cut III Spiral Jointer / Planer Heads

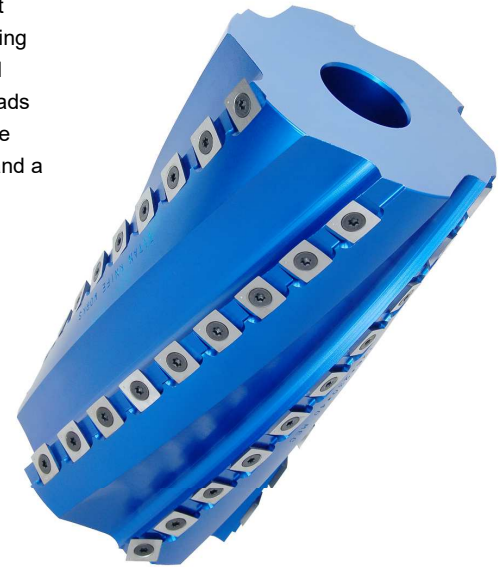
Jointer / Planer Model	Part #
6" General Jointer (63mm cutting dia.)	MSJ-G6-63
6" Yorkcraft YC-6J Jointer (64mm cutting dia.)	MSJ-YC-6J
8" Delta 37-315	MSJ-37-315
8" Delta DJ-20 Jointer	MSJ-DJ-20
8" General Jointer (3.125" cutting dia.)	MSJ-G8M
8" Powermatic P60A & P60B Jointer (5/8" dia. shaft)	MSJ-P60
12-1/2" Dewalt DW733 & DW734 Planer	MSJ-DW733-734
13" Dewalt DW735 Planer	MSJ-DW735
13" Ridgid R4331	MSJ-R4331
13" Ridgid TP1300, R4330, Cuttech 40200	MSJ-TP1300
15" General 4-Post Planer	MSJ-G15
18" Powermatic 180 (Bearings sold separately.)	MSJ-P180
20" General 4-Post Planer	MSJ-G20
Spare Screw (T25)	MS-KS-LC
Spare Insert (15x15x2.5) with Screw (T25)	IC-251515-DL
*Sold in boxes of 10	



SPIRAL INSERT KNIFE SURFACING HEADS

Quiet Cutting: Looking for a better surfacing head option? Spiral knife insert heads make constant contact with the material offering reduced cutting noise - typically 20 decibels less. Each long wearing carbide knife has four edges that can be dulled before replacement. These heads improve material finishes on cross grain, lower long term tooling cost, and eliminate sharpening costs. Our spiral heads offer special radius edge inserts to reduce any chance of knife corners marking your material. Made from 7071-T6 high strength aircraft aluminum. Heads include a set of carbide knives ready to run and a torx wrench for turning and replacing the knives. Heads use 15 x 15 x 2.5 inserts.

Head prices include set of knives. Most heads in stock for immediate delivery.



Spiral Insert Knife Surfacing Heads - 6 Row

Cutting Length	Rows of Knives	Body Diameter	Standard Bore	Part #
2" (50mm)	6	100mm *	1.25"	MS10042
4" (100mm)	6	100mm *	1.25"	MS10044
6" (150mm)	6	100mm *	1.25"	MS10046
2" (50mm)	6	125mm	40mm	MS12562F
4" (100mm)	6	125mm	40mm	MS12564
6" (150mm)	6	125mm	40mm	MS12566
7" (180mm)	6	125mm	40mm	MS12567F
8" (200mm)	6	125mm	40mm	MS12568F
9" (230mm)	6	125mm	40mm	MS12569
2" (50mm)	6	125mm	1.5"	MS12562F-1.5
4" (100mm)	6	125mm	1.5"	MS12564F-1.5
6" (150mm)	6	125mm	1.5"	MS12566F-1.5
7" (180mm)	6	125mm	1.5"	MS12567F-1.5
9" (230mm)	6	125mm	1.5"	MS12569F-1.5
9.5" (240mm)	6	125mm	1.5"	MS12569.5F-1.5
2" (50mm)	6	140mm	1-13/16"	MS14062F
4" (100mm)	6	140mm	1-13/16"	MS14064
6" (150mm)	6	140mm	1-13/16"	MS14066
7" (180mm)	6	140mm	1-13/16"	MS14067
9" (230mm)	6	140mm	1-13/16"	MS14069F
9.5" (240mm)	6	140mm	1-13/16"	MS14069.5
12.2" (310mm)	6	140mm	1-13/16"	MS1406310F
Product Description				Part #
Spare Knives -15 x 15 x 2.5mm - 8 Radius				IC-2515154-8R
T20 Torx Wrench - 8"				MS-T20 W
Spare Screws for Titan Spiral Heads M6-15 (Torque 4ft/lbs = 50inch/lbs)				MS-KS615
Spare Screws for Byrd Journal Heads				MS-BS-S
Spare Screws for Weinig Spiral Heads				MS-NA-S
Spare Screws for Shinmax Spiral Heads				MS-KSSM

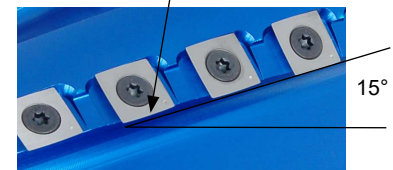
* Non-Shear Type

See page 36 for Reference Engravers.



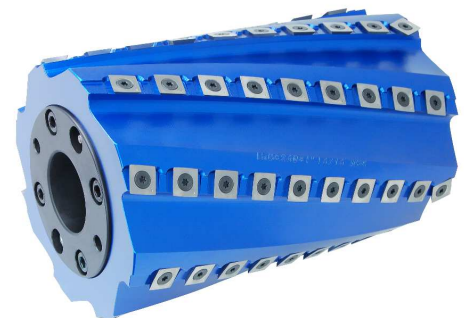
Not shown to scale.

Spiral heads now come with face shear for smoother cutting.



See page 22 for insert knife listings.

Custom heads also available including hydro bore and self centering spiral heads.

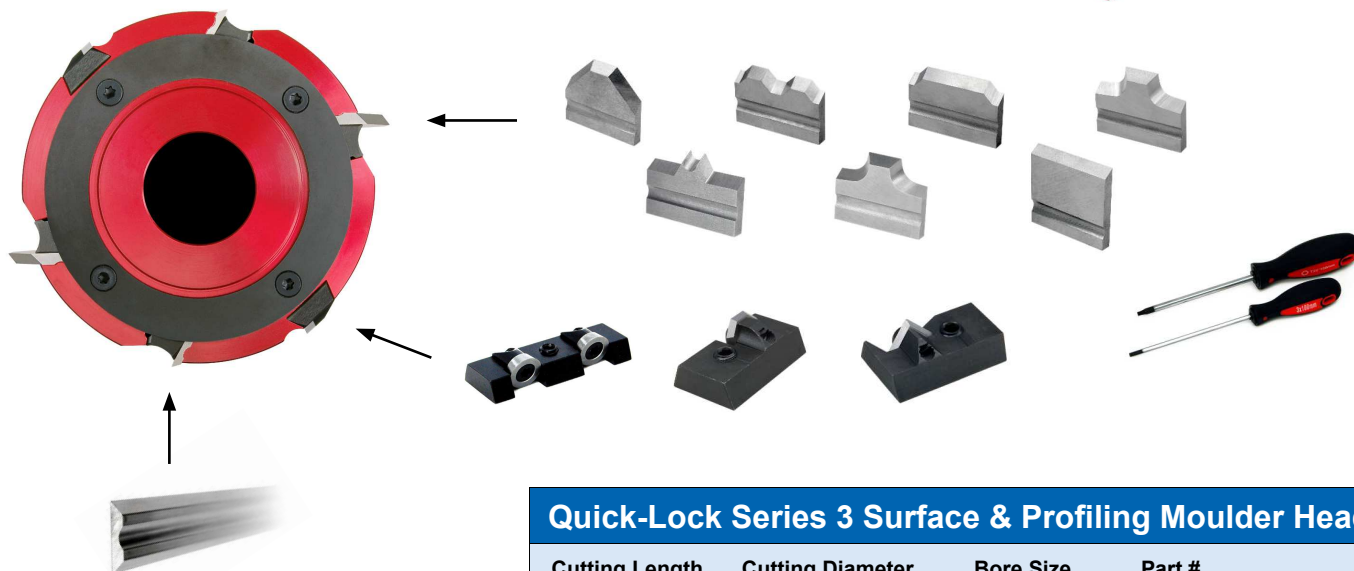


QUICK-LOCK INSERT MOULDER HEADS

Surface & Profile with the same head.

- Series 3 Heads (2 + 2 + 2)
- 6 Pockets / 3 Pocket Types
- Quick Knife Setup
- No Resharpening Needed
- Long Tool Life Carbide
- Affordable Replacement Knives
- Extraordinary Surface Finish
- Light Weight Aluminum Alloy

In Stock for
Immediate Delivery



The ultimate system for efficiency and versatility. Our Quick-Lock heads offer a total of 6-knife pockets; two surfacing knives, two pockets for profile knives, and two additional pockets that accept profile knife holders and low cost inserts for profiles.

Quick-Lock head prices include set of T1-HSS planer knives.

Call for
Hydro Lock
Bore Options



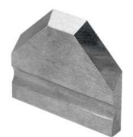
Quick-Lock Series 3 Surface & Profiling Moulder Heads

Cutting Length	Cutting Diameter	Bore Size	Part #
100mm	125mm	1.50"	QL125-100-9300-1.5
150mm	125mm	1.50"	QL125-150-9300-1.5
180mm	125mm	1.50"	QL125-180-9300-1.5
230mm	125mm	1.50"	QL125-230-9300-1.5
240mm	125mm	1.50"	QL125-240-9300-1.5
100mm	125mm	40mm	QL125-100-9300-40
150mm	125mm	40mm	QL125-150-9300-40
180mm	125mm	40mm	QL125-180-9300-40
230mm	125mm	40mm	QL125-230-9300-40
240mm	125mm	40mm	QL125-240-9300-40
100mm	140mm	1-13/16"	QL140-100-9300-1.813
150mm	140mm	1-13/16"	QL140-150-9300-1.813
180mm	140mm	1-13/16"	QL140-180-9300-1.813
230mm	140mm	1-13/16"	QL140-230-9300-1.813
240mm	140mm	1-13/16"	QL140-240-9300-1.813
310mm	140mm	1-13/16"	QL140-310-9300-1.813

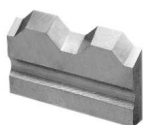
Call for custom sizes and different knife pocket configurations.



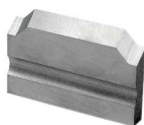
QUICK-LOCK INSERT PROFILE & PLANER KNIVES



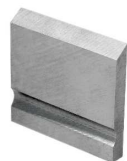
45 Deg.
Double Bevel



Double
Back Out



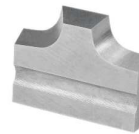
Single Plow
Back Out



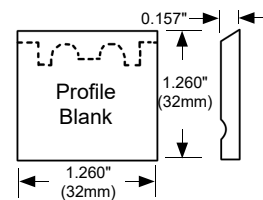
1/4" Deep Plow
1/8" Deep Plow
(32mm Wide)



Bead



1/16" Radius
3mm (1/8") Radius
3/16" Radius
2mm Radius
6mm Radius



9100 Stop
Block

Long Wearing
C3 Carbide

9100 Style

Quick-Lock Profile Knives (Flat) C3 Carbide

Part #	Description
TK-P10945	Single Plow Back Out (1" Wide x 3/32" Deep)
TK-P10947	Double Back Out (1-1/16" Wide x 3/32" Deep)
TK-P10952	45 Degree Double Bevel
TK-P10879	1/8" Deep Plow (1-1/4" Deep)
TK-P10887	1/4" Deep Plow (1-1/4" Deep)
TK-P10998	Bead (3/8" Wide Overall x 3/16" Wide Bead)
TK-P10980	1/16" Radius
TK-P10975	3/16" Radius
TK-P10997	2mm Radius (0.0787")
TK-P10983	3mm Radius (1/8")
TK-P10992	6mm Radius (0.236")
TK-P10946-NP	Profile Blank 1/2" Max Depth (1-1/4" x 1-1/4")
TK-P10946-B	HSS Profile Blank (150mm Wide x 32mm Deep)
TK-Profile	Profile Blank Grinding Service
TK-PGIB	Gib for Quick-Lock Profile Knives
TK-P9100SB	Stop Block



Double Back Out Holder
(Knives Sold Separately)



9200 Stop Block



Double Back Out Knives
(Cuts 1/8" Deep x 3/8" Wide)

9200 Style

Quick-Lock Profile Inserts & Holders

Part #	Description
TK-P9200DB	Double Back Out Holder - w/o Knives
TK-P9200DB-K-	Double Back Out Knife - Carbide
TK-P9200DB-S	Torx Screw
TK-P9200VG	V Groove Holder 9mm - LEFT
TK-P9200VG-R	V Groove Holder 9mm - RIGHT
TK-P9200VG-K	V Groove Knife 9mm x 9mm x 1.5mm
TK-P9200VG-S	V Groove Knife Screw 9mm
TK-P92003L	Radius Holder - LEFT
TK-P92003R	Radius Holder - RIGHT
TK-P9200-2RK	2mm Radius Insert Knife - Carbide
TK-P9200-3RK	3mm Radius Insert Knife - Carbide
TK-P9200-4RK	4mm Radius Insert Knife - Carbide
TK-P9200-BV	Chamfer Insert Knife - Carbide
TK-P9200SB	Stop Block

9000 Style

Quick-Lock Steel & Carbide Planer Knives

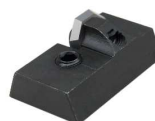
Cutting Length	T1-HSS Part #	Carbide Part #
50 mm	TK-50T	TK-50C3
60 mm	TK-60T	TK-60C3
80 mm	TK-80T	TK-80C3
100 mm	TK-100T	TK-100C3
120 mm	TK-120T	TK-120C3
130 mm	TK-130T	TK-130C3
150 mm	TK-150T	TK-150C3
180 mm	TK-180T	TK-180C3
200 mm	TK-200T	TK-200C3
230 mm	TK-230T	TK-230C3
240 mm	TK-240T	TK-240C3
250 mm	TK-250T	
270 mm	TK-270T	TK-270C3
300 mm	TK-300T	TK-300C3
310 mm	TK-310T	TK-310C3
420 mm	TK-420T1	
460 mm	TK-460T1	TK-460C3
464 mm	TK-464T1	
520 mm	TK-520T1	
540 mm		TK-540C3
616 mm	TK-616T	
635 mm	TK-635T	
700 mm	TK-700T	



Left V Groove Holder (Shown)
Right V Groove Holder



V Groove Knife
(Cuts 3mm Deep)



Right Radius Holder (Shown)
Left Radius Holder



Chamfer
Insert



2mm
Radius



3mm
Radius



4mm
Radius

(3mm Overall Depth of Cut)



We offer a complete line of dual cutting angle moulder heads for cutting both hard and softwoods with the same tool - like getting two heads for the price of one! This is the best choice for custom millwork producers who need the flexibility to handle any job at a moments notice without having to stock many different cutterheads. Our stock heads are 12 degree cutting angle for hardwood to reduce raised grain, and 20 degree cutting angle to reduce fuzzing in softwoods. Only 2-knives are required on non-jointed moulders, using 4-knives

will not improve the surface finish. We can also supply filler wedges for the empty unused pockets. All heads are precision CNC machined from high strength hardened alloy steel and designed to operate at speeds up to 9,000 rpm. Heads are made to exceed the most stringent European OEM standards allowing you to produce smooth material finish with years of trouble free use. Custom cutter heads can be produced with any cutting angle, body diameter, and bore sizes - call for prices.



Corrugated Filler Wedges and Reducing T-Bushings. See page 38.

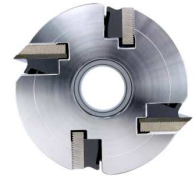
Weinig, Wadkin, SCMI, IIDA, Leadermac, Woodmizer, Silver, & other Mid-Sized Moulders:

The S122 line, 4.80" body diameter, is designed for use on most European & Asian imported moulders using industry standard features and metric hardware. Plus we have added features not offered by the German tool makers such as a high alloy strong tool steel body for greater tool life and deeper knife pockets to allow wider and thicker steel to be used for additional sharpenings.

S122: Straight Bore 4.8" / 122mm OD x 40mm or 1.50" Bore

Cut Length	Bore Size	Part #
50mm (1.96")	40mm	MH-122-4-50D
	1.5"	MH-122-4-50D-1.5
60mm (2.36")	40mm	MH-122-4-60D
	1.5"	MH-122-4-60D-1.5
80mm (3.15")	40mm	MH-122-4-80D
	1.5"	MH-122-4-80D-1.5
100mm (3.94")	40mm	MH-122-4-100D
	1.5"	MH-122-4-100D-1.5
130mm (5.12")	40mm	MH-122-4-130D
	1.5"	MH-122-4-130D-1.5
150mm (5.91")	40mm	MH-122-4-150D
	1.5"	MH-122-4-150D-1.5
180mm (7.08")	40mm	MH-122-4-180D
	1.5"	MH-122-4-180D-1.5
230mm (9.05")	40mm	MH-122-4-230D
	1.5"	MH-122-4-230D-1.5

Dual Hook Moulder Heads 4-Knife, 12/20 degree



Shapers, Paulson, XL, & Import Brand Moulders:

The S100 dual hook line has a 4" body diameter with a 1-1/4" bore that is designed for spindle shapers and most smaller non-jointed moulders. These heads offer the flexibility to use corrugated knife steel with high rpm rotation to cut either hard or softwoods with the same head body. Bore bushings can be offered for shapers with 1" diameter spindles.

S100: Straight Bore 4" / 100mm OD x 1.25" Bore

Cut Length	Bore Size	Part #
50mm (1.96")	1.25"	MH-100-4-50D
60mm (2.36")	1.25"	MH-100-4-60D
80mm (3.15")	1.25"	MH-100-4-80D
100mm (3.94")	1.25"	MH-100-4-100D
150mm (5.91")	1.25"	MH-100-4-150D

Weinig, Wadkin, SCMI, IIDA, Leadermac, Woodmizer, Silver, & other Mid-Sized Moulders:

This line uses industry standard features and metric hardware, plus we have added a features not offered by the German tool makers like; a high alloy strong tool steel body for greater tool life and deeper knife pockets to allow wider and thicker steel to be used for additional sharpenings. Limited stock on 2-1/8" bore heads.

S137: Straight Bore 5.4" / 137mm OD x 1-13/16" or 2-1/8" Bore

Cut Length	Bore Size	Part #
50mm (1.96")	1-13/16"	MH-137-4-50D
	2-1/8"	MH-137-4-50D-2.125
60mm (2.36")	1-13/16"	MH-137-4-60D
	2-1/8"	MH-137-4-60D-2.125
80mm (3.15")	1-13/16"	MH-137-4-80D
	2-1/8"	MH-137-4-80D-2.125
100mm (3.94")	1-13/16"	MH-137-4-100D
	2-1/8"	MH-137-4-100D-2.125
130mm (5.12")	1-13/16"	MH-137-4-130D
	2-1/8"	MH-137-4-130D-2.125
150mm (5.91")	1-13/16"	MH-137-4-150D
	2-1/8"	MH-137-4-150D-2.125
180mm (7.08")	1-13/16"	MH-137-4-180D
	2-1/8"	MH-137-4-180D-2.125
230mm (9.05")	1-13/16"	MH-137-4-230D
	2-1/8"	MH-137-4-230D-2.125
310mm (12.20")	1-13/16"	MH-137-4-310D
	2-1/8"	MH-137-4-310D-2.125

STRAIGHT BORE MOULDER HEADS

We offer a complete line of straight bore corrugated pocket moulder heads that fit most moulders and shapers. We can make heads to any one of four different hook angles, special bore sizes and add special features. All heads are precision CNC machined from high strength steel & ISO GQ 1.0 balanced to 9,000 rpm. Heads exceed stringent European OEM standards to produce smooth material finishes with years of trouble free use. Choose your cutting angle 10, 12, 15, or 20 degrees or a combination of these in the same cutterhead for cutting both hardwoods and softwoods. Heads are made to order in about 4 weeks.

2-Knife Shaper / Mini-Moulder

(IN STOCK) Heads hold standard corrugated knives for smaller diameter shapers.



Shapers, Paulson, XL & Import Brand Moulders:

The S100 MTO line of heads have a 4" body diameter with a 1-1/4" bore. Designed for spindle shapers and most smaller non-jointed moulders with the flexibility to use corrugated knife steel with high rpm rotation. 2-knife versions also offered at a 10% savings. Bore T-bushings available for smaller shapers with 1" diameter spindles.

S100: Straight Bore 4" / 100mm OD x 1.25" Bore

Cut Length	# of Knives	Bore Size	Part #
50mm (1.96")	4	1.25"	MH100-4-50
60mm (2.36")	4	1.25"	MH100-4-60
80mm (3.15")	4	1.25"	MH100-4-80
100mm (3.94")	4	1.25"	MH100-4-100
150mm (5.91")	4	1.25"	MH100-4-150

Weinig, Wadkin, SCMI, IIDA, Leadermac, Woodmizer, Silver & other Mid-Sized Moulders:

The S122 line, 4.80" body diameter, is designed for use on most European & Asian imported moulders. Stock head sizes: 40mm or 1-1/2" spindle bore. These use industry standard features and metric hardware, plus added features not offered by the German tool makers such as a high alloy tool steel body for greater tool life and deeper knife pockets for wider steel to be used for additional resharpenings. Knife pockets accept from 3/16" thick steel up to 10mm thick corg. steel.

S122: Straight Bore 4.8" / 122mm OD x 40mm or 1.50" Bore

Cut Length	# of Knives	Bore Size	Part #
50mm (1.96")	4	40mm	MH122-4-50
		1.5"	MH122-4-50-1.5
60mm (2.36")	4	40mm	MH122-4-60
		1.5"	MH122-4-60-1.5
80mm (3.15")	4	40mm	MH122-4-80
		1.5"	MH122-4-80-1.5
100mm (3.94")	4	40mm	MH122-4-100
		1.5"	MH122-4-100-1.5
130mm (5.12")	4	40mm	MH122-4-130
		1.5"	MH122-4-130-1.5
150mm (5.91")	4	40mm	MH122-4-150
		1.5"	MH122-4-150-1.5
180mm (7.08")	4	40mm	MH122-4-180
		1.5"	MH122-4-180-1.5
230mm (9.05")	4	40mm	MH122-4-230
		1.5"	MH122-4-230-1.5

Weinig, Wadkin, SCMI, IIDA, Leadermac, Woodmizer, Silver & other Mid-Sized Moulders:

The S137 line with a 5.40" body diameter is designed for use on European and Asian imported moulders that have larger spindle diameters. Stock head sizes: 1-13/16" or 2-1/8" spindle bore. Heads include industry standard features, heat treated alloy steel for greater strength, and dynamically balanced to 9,000 rpm (ISO grade quality 1.0) for smoother cutting. H7 precision bore tolerance is used to decrease radial run-out and provide the smoothest cut possible with a straight bore head.

S137: Straight Bore 5.5" / 137mm OD x 1-13/16" or 2-1/8" Bore

Cut Length	# of Knives	Bore Size	Part #
60mm (2.36")	4	1-13/16"	MH137-4-60
		2-1/8"	MH137-4-60-2.125
100mm (3.94")	4	1-13/16"	MH137-4-100
		2-1/8"	MH137-4-100-2.125
130mm (5.12")	4	1-13/16"	MH137-4-130
		2-1/8"	MH137-4-130-2.125
150mm (5.91")	4	1-13/16"	MH137-4-150
		2-1/8"	MH137-4-150-2.125
180mm (7.08")	4	1-13/16"	MH137-4-180
		2-1/8"	MH137-4-180-2.125
230mm (9.05")	4	1-13/16"	MH137-4-230
		2-1/8"	MH137-4-230-2.125
310mm (12.2")	4	1-13/16"	MH137-4-310
		2-1/8"	MH137-4-310-2.125

HYDRO-LOCKING BORE MOULDER HEADS: 4 & 6 KNIFE



We offer an expansive line of hydro-loc moulder heads for high production moulders. You choose the cutting angle; 10, 12, 15, 20 degrees, etc. Made from high strength hardened steel, CNC machined to exact tolerances and balanced to run up to 8000 rpm. These offer finer surface finishes with the durability to withstand years of continuous use on high speed moulders. Heads are available in a variety of sizes and made to order in about 6 weeks. Hydro-Sleeves are made from high yield strength alloy steel to avoid deforming the sleeves over years of use. To avoid damage always use safety lock collars at all times. Do not exceed max. pressure on heads, do not pressurize heads on an undersized spindle, or spindles with keyways. Check pressure daily.

**High Quality
Lower Prices
Quick Delivery**

Weinig, Mattison, Wadkin, Diehl, Leadermac, and other jointed high speed Moulders:

The H150 line is for use on high speed jointed moulders. Offered in 4 or 6 knife pockets for feed speeds up to 300 ft per min. and up to 9000 rpm. Call for additional prices on custom designed heads with shear cutting angles, etc. Standard heads come with your choice of cutting angles and bore size. Heads are made in about 6 weeks to the cutting angle you need.

H150: Hydro Bore 5.9" / 150mm OD x 1-13/16", 2-1/8", or 50mm Bore

Cut Length	# of Knives	Bore Size	Part #
60mm (2.36")	4	1-13/16"	MH150-4-60HL
		2-1/8"	MH150-4-60HL2.125
100mm (3.94")	4	1-13/16"	MH150-4-100HL
		2-1/8"	MH150-4-100HL2.125
130mm (5.12")	4	1-13/16"	MH150-4-130HL
		2-1/8"	MH150-4-130HL2.125
150mm (5.91")	4	1-13/16"	MH150-4-150HL
		2-1/8"	MH150-4-150HL2.125
180mm (7.08")	4	1-13/16"	MH150-4-180HL
		2-1/8"	MH150-4-180HL2.125
230mm (9.05")	4	1-13/16"	MH150-4-230HL
		2-1/8"	MH150-4-230HL2.125
310mm (12.2")	4	1-13/16"	MH150-4-310HL
		2-1/8"	MH150-4-310HL2.125
60mm (2.36")	6	1-13/16"	MH150-6-60HL
		2-1/8"	MH150-6-60HL2.125
100mm (3.94")	6	1-13/16"	MH150-6-100HL
		2-1/8"	MH150-6-100HL2.125
130mm (5.12")	6	1-13/16"	MH150-6-130HL
		2-1/8"	MH150-6-130HL2.125
150mm (5.91")	6	1-13/16"	MH150-6-150HL
		2-1/8"	MH150-6-150HL2.125
180mm (7.08")	6	1-13/16"	MH150-6-180HL
		2-1/8"	MH150-6-180HL2.125
230mm (9.05")	6	1-13/16"	MH150-6-230HL
		2-1/8"	MH150-6-230HL2.125
310mm (12.2")	6	1-13/16"	MH150-6-310HL
		2-1/8"	MH150-6-310HL2.125

Weinig, Wadkin, SCMI, Ilda, Leadermac, Woodmizer, Silver, & other Mid-Sized Moulders:

For use with smaller moulders that require the 122mm body diameter, up to 9000 rpm, and the added benefit of precision tool centering for smoother cutting on non-jointed machines. Heads include all standard features with build-in hydro-sleeves. Call for custom bore prices.

H122: Hydro Bore 4.8" / 122mm OD x 40mm or 1.50" Bore (Made to Order)

Cut Length	# of Knives	Bore Size	Part #
60mm (2.36")	4	40mm	MH122-4-60HL
		1.5"	MH122-4-60HL1.5
100mm (3.94")	4	40mm	MH122-4-100HL
		1.5"	MH122-4-100HL1.5
150mm (5.91")	4	40mm	MH122-4-150HL
		1.5"	MH122-4-150HL1.5
180mm (7.08")	4	40mm	MH122-4-180HL
		1.5"	MH122-4-180HL1.5
230mm (9.05")	4	40mm	MH122-4-230HL
		1.5"	MH122-4-230HL1.5

Weinig, Wadkin, SCMI, IIDA, Leadermac, Woodmizer, Silver, & other Mid-Sized Moulders:

These heads are used on moulders with larger spindles and larger cutting capacities. Heads are precision made to run to 9000 rpm and are dynamic balanced to ISO Grade quality 1.0. Heads are offered with all the industry standard features and metric hardware; knife pockets are designed to accept knife steel from 3/16" thick up to 10mm thick corrugated. Heads are made to order - you choose the cutting angle. Dual hook, or single hook on all 4-pockets for high speed jointed moulders. Jointed knife feed speeds up to 200 ft. per min.

H137: Hydro Bore 5.4" / 137mm OD x 1-13/16" Bore (Made to Order)

Cut Length	# of Knives	Bore Size	Part #
60mm (2.36")	4	1-13/16"	MH137-4-60HL
100mm (3.94")	4	1-13/16"	MH137-4-100HL
130mm (5.12")	4	1-13/16"	MH137-4-130HL
150mm (5.91")	4	1-13/16"	MH137-4-150HL
180mm (7.08")	4	1-13/16"	MH137-4-180HL
230mm (9.05")	4	1-13/16"	MH137-4-230HL
260mm (10.23")	4	1-13/16"	MH137-4-260HL
310mm (12.2")	4	1-13/16"	MH137-4-310HL

Custom bore sizes are offered, call for details.



HYDRO-LOCKING BORE MOULDER HEADS: 8 & 10 KNIFE

We offer an expansive line of hydro-lock moulder heads for high speed production moulders. A standard line of 8 and 10 knife moulder heads. We can produce 12+ knife heads for Waco, Thundermac, and other high speed moulders and planers. Choose your cutting angle; 10, 12, 15, 20 degrees, etc. Heads are made from high strength hardened steel that are CNC machined to exacting tolerances and balanced to run up to 8000 rpm. Our heads have finer surface finishes with the durability to withstand years of continuous use on high speed moulders. Available are a variety of sizes to fit your machine. Heads are made to order in about 6 weeks.



**High Quality
Lower Prices
Quick Delivery**

H163: Hydro Bore 6.4" / 163mm OD x 1-13/16", 2-1/8", or 50mm Bore (Made to Order)

Cut Length	# of Knives	Bore Size	Part #
60mm (2.36")	8	1-13/16"	MH163-8-60HL
		2-1/8"	MH163-8-60HL2.125
100mm (3.94")	8	1-13/16"	MH163-8-100HL
		2-1/8"	MH163-8-100HL2.125
130mm (5.12")	8	1-13/16"	MH163-8-130HL
		2-1/8"	MH163-8-130HL2.125
150mm (5.91")	8	1-13/16"	MH163-8-150HL
		2-1/8"	MH163-8-150HL2.125
180mm (7.08")	8	1-13/16"	MH163-8-180HL
		2-1/8"	MH163-8-180HL2.125
230mm (9.05")	8	1-13/16"	MH163-8-230HL
		2-1/8"	MH163-8-230HL2.125
260mm (10.23")	8	1-13/16"	MH163-8-260HL
		2-1/8"	MH163-8-260HL2.125
310mm (12.2")	8	1-13/16"	MH163-8-310HL
		2-1/8"	MH163-8-310HL2.125

H195: Hydro Bore 7.6" / 195mm OD x 1-13/16" or 2-1/8", or 50mm Bore (Made to Order)

Cut Length	# of Knives	Bore Size	Part #
60mm (2.36")	10	1-13/16"	MH195-10-60HL
		2-1/8"	MH195-10-60HL2.125
100mm (3.94")	10	1-13/16"	MH195-10-100HL
		2-1/8"	MH195-10-100HL2.125
130mm (5.12")	10	1-13/16"	MH195-10-130HL
		2-1/8"	MH195-10-130HL2.125
150mm (5.91")	10	1-13/16"	MH195-10-150HL
		2-1/8"	MH195-10-150HL2.125
180mm (7.08")	10	1-13/16"	MH195-10-180HL
		2-1/8"	MH195-10-180HL2.125
230mm (9.05")	10	1-13/16"	MH195-10-230HL
		2-1/8"	MH195-10-230HL2.125
310mm (12.2")	10	1-13/16"	MH195-10-310HL
		2-1/8"	MH195-10-310HL2.125

Weinig, Wadkin, SCMI, IIDA, Leadermac, Waco, & other High Production Moulders:

These heads are used on production moulders with feed rates up to 350 feet per min. Heads are precision made to run to 6000 rpm and are dynamic balanced to ISO Grade quality 1.0. Heads have all the industry standard features and metric hardware; knife pockets are designed to accept knife steel from 3/16" thick up to 10mm thick corrugated. Heads are made to order - you choose the cutting angle. For the same price you can add axial constant 7mm wide side hubs to the heads. Additional features and custom designs can be added like additional outside diameter grease fittings, and deeper knife pockets, notched gibs, and square head gib bolts.

Metric Zerc Grease Inlet Fitting

(New Style: Built-in O-Ring)

Part # MH-GF-600-N

Metric Grease Release Valve

(New Style: Built-in O-Ring)

Part # MH-RV-600-N



Weinig, Mattison, Wadkin, Diehl, Leadermac, and other jointed high speed Moulders:

The H195 line our line of 10 and 12 knife moulder is for use on high speed jointed moulders. Available in 4 or 6-knife pockets for feed speeds up to 300 ft per min. and up to 6000 rpm. Call for additional prices on 8 and 10-knife heads in the 163mm body diameter. Standard heads come with your choice of cutting angles and bore size. Heads are made in about 6 weeks to the cutting angle you need.

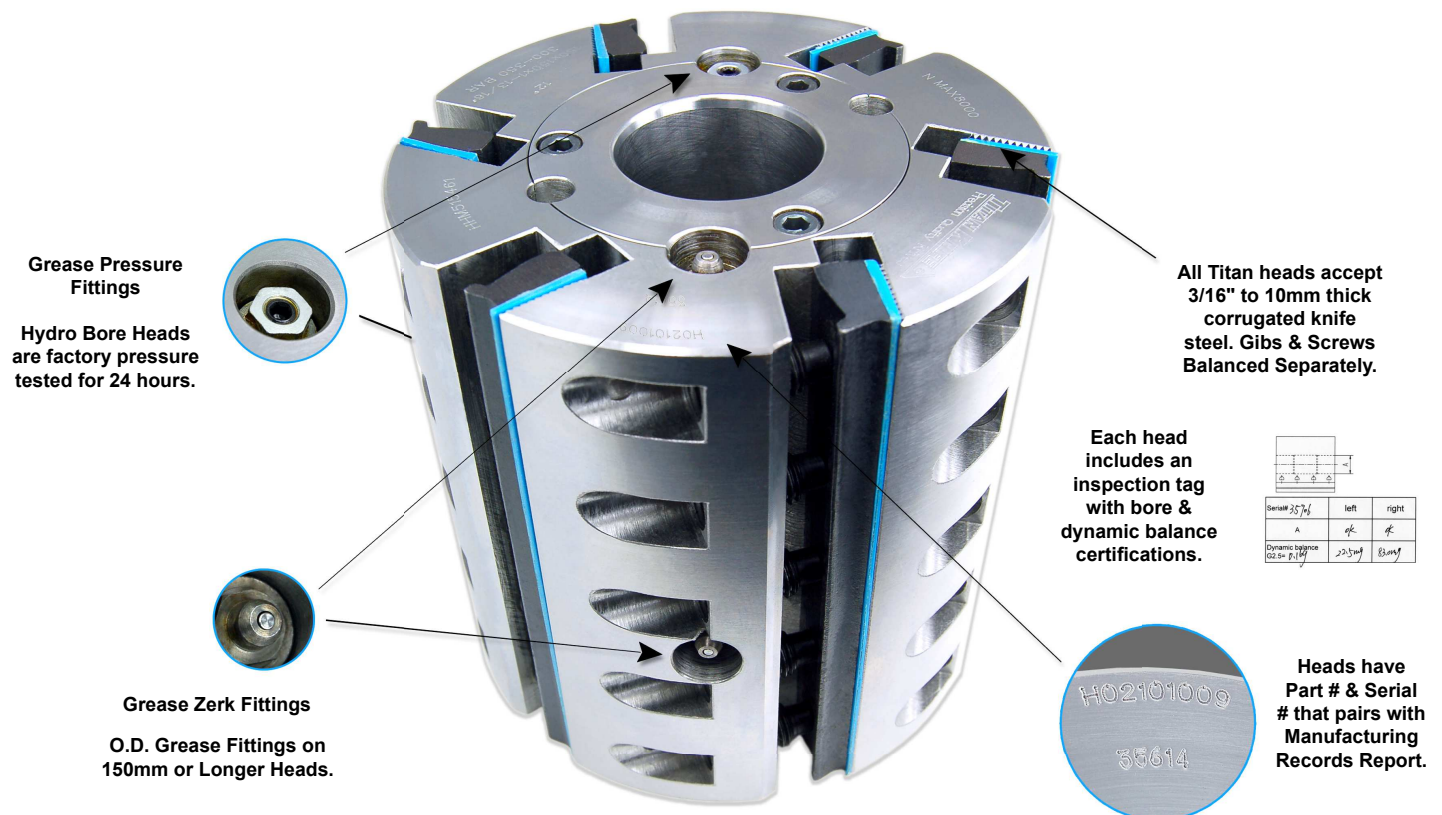
Hydro-Sleeves are made from high yield strength alloy steel to avoid deforming over years of use. To avoid damage be sure to always use safety lock collars at all times. Do not exceed max. pressure on heads, do not pressurize heads on an undersized spindle, or spindles with keyways. Check pressure daily.

Call for prices on 12+ knife moulder heads and smooth pocket planer heads for Newman, SR, Coastal, USNR, and Yates Planers.

TITAN CORRUGATED CUTTERHEAD ANALYSIS HYDRO & STRAIGHT BORE

		Titan	German	Popular Brands
Balance Tolerance	<i>Straight Bore</i>	ISO G-1.8 to G-2.5	ISO G-2.5	ISO G-2.5
	<i>Hydro Bore</i>	Multi-Plane Computer Dynamically Balanced ISO G-1.0 to G-1.8		
Pocket Concentricity	<i>Straight Bore</i>	.0023" (.06 mm)	N/A	N/A
	<i>Hydro Bore</i>	.0018" (.05 mm)		
Bore Tolerance		+ 5 to + 20 Microns * * Depends on Bore Size & Hydro Bore Style	+ 5 to + 20 Microns	N/A
Material	<i>Head</i>	Stress relieved, heat treated, high strength, high alloy steel. (ANSI 5140HT) HB200-220 Hardness.	Heat Stabilized Steel	Premium Hardened Steel
	<i>Hydro Sleeve</i>	(ANSI 4142HT) HB240-260 Hardness		
RPM Head Rating		9000 RPM 100, 122, & 137 mm Dia. 8000 RPM for 150mm Diameter 6000 RPM for 163mm Diameter	8000 RPM 8000 RPM N/A	N/A 8000 RPM N/A
List Price Comparison				
Straight Bore - 122mm Dia., 150mm Cut Length, 1-1/2" Bore, 4 Pocket, Dual Hook		\$473.50	Around 79% Higher Cost	Around 80% Higher Cost
Hydro Bore - 150mm Dia., 150mm Cut Length, 1-13/16" Bore, 6 Pocket		\$975.48	Around 96% Higher Cost	Around 80% Higher Cost

**With equal or greater quality,
Titan heads are a more cost effective option.**



NEW!

TITAN DIAMOND FLOORING CUTTERS

Polycrystalline Diamond (PCD) is the hardest and one of the most abrasive resistant materials used in cutting tools today.

PERFORMANCE

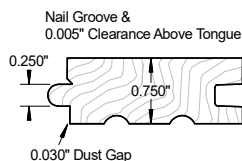
Life Between Sharpenings >

DIAMOND (PCD)

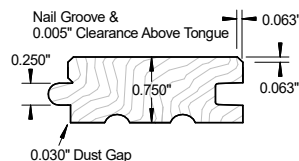
CARBIDE

STEEL

3/4" FLOORING



3/4" FLOORING WITH MICRO BEVEL



A conservative estimate is that PCD cutters will last 25 times longer than carbide and given the right conditions and maintenance it is conceivable for it to outlast carbide by a ratio of 300:1.

PCD cutters are made to extremely tight tolerances resulting in faster feed rates and better finish.

Although PCD is typically used for processing highly abrasive man made materials such as MDF and composites; it can also be used for some of the more dense and abrasive hardwoods. The more abrasive the material is, the greater the benefit of PCD.

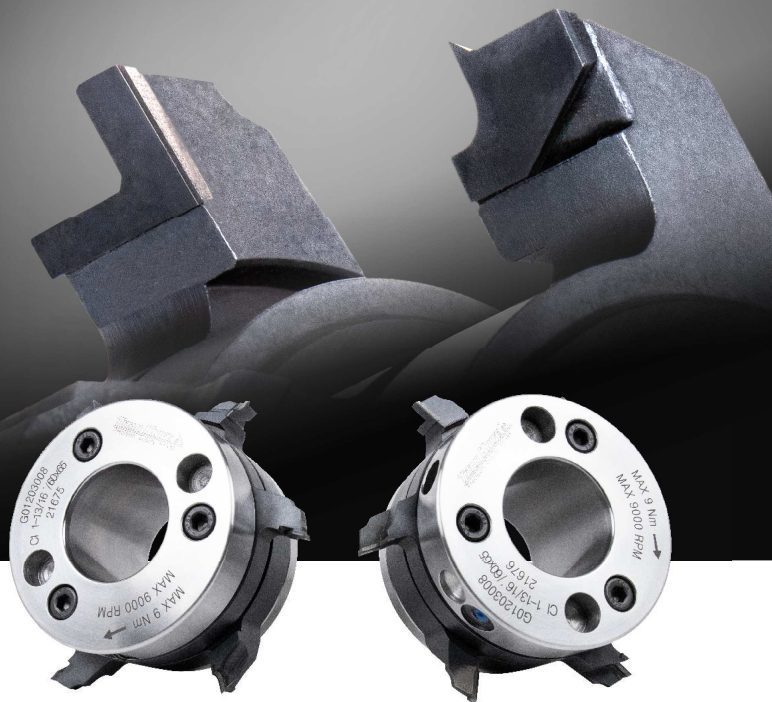
Servicing

Tongue Set

Groove Set

Tongue w/ Micro Bevel Set

Groove w/ Micro Bevel Set



Titan Diamond Flooring Cutters

Profile	Part #	
Face Down, Groove	DCH-5360-FDG	
Face Down, Tongue	DCH-5360-FDT	
Face Down, Groove, Micro Bevel	DCH-5360-FDGM	
Face Down, Tongue, Micro Bevel	DCH-5360-FDTMB	
Face Up, Groove	DCH-5360-FUG	
Face Up, Tongue	DCH-5360-FUT	
Face Up, Groove, Micro Bevel	DCH-5360-FUGMB	
Face Up, Tongue, Micro Bevel	DCH-5360-FUTMB	
Hydro Sleeve	Bore	Part #
Select Sleeve To Fit Your Spindle	1-1/2"	CI:1-1/2/60-65
	40mm	CI:40/60-65
	1-13/16"	CI:1-13/16/60-65
	50mm	CI:50/60-65
	2-1/8"	CI:2-1/8/60-65

Titan Diamond Flooring End Match Cutters

Bore	Profile	Part #
1-1/4"	Face Down, Groove	DCH-43125-FDG
1-1/4"	Face Down, Tongue	DCH-43125-FDT
1-1/4"	Face Up, Groove	DCH-43125-FUG
1-1/4"	Face Up, Tongue	DCH-43125-FUT

HEAVY DUTY MULTI-PROFILE INSERT HEADS & KNIVES



6mm Thick Steel Backer
Part # IBHD-60-TGD

2mm Thick Carbide Knife
Part # ICHD-60-TGD

Our new heavy duty multi-profile insert heads accommodate a wide variety of profiles; including deep profiles. The HD design is especially suited for troublesome woods. The knife system incorporates 6mm thick backers for extra strength and the heads are 3-wing for increased durability. A groove cutter support prong can be added to the tool body for even more strength and durability.

60mm wide heads, knives, and backers are available for 3/4" thick flooring and are in stock for immediate delivery.

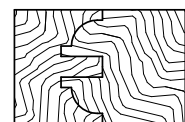
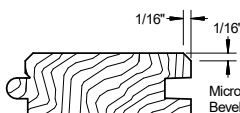
Examples:

Flooring

Panelling

Door Frames

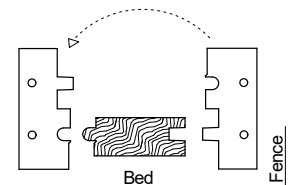
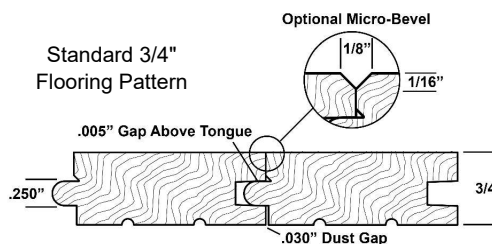
Cabinet Door Frames



HD Multi-Profile Insert Heads (3-Wing) & Knives

40mm Head & Knife Width 1-7/16" Max Wood	40mm Width, 5" Minor Dia.		Part #
	1-1/2" Bore Head		IHHD-40-1.5
	40mm Bore Head		IHHD-40-40
	1-13/16" Bore Head		IHHD-40-1.813
	Knife Height	Depth of Cut	Part #
	25mm	0.375"	ICHD-40-25
	30mm	0.500"	ICHD-40-30
	35mm	0.625"	ICHD-40-35
	40mm	0.750"	ICHD-40-40
	40mm Backer		IBHD-40
60mm Head & Knife Width 2-1/4" Max Wood	60mm Width, 5" Minor Dia.		Part #
	1-1/2" Bore Head		IHHD-60-1.5
	40mm Bore Head		IHHD-60-40
	1-13/16" Bore Head		IHHD-60-1.813
	Knife Height	Depth of Cut	Part #
	25mm	0.375"	ICHD-60-25
	30mm	0.500"	ICHD-60-30
	35mm	0.625"	ICHD-60-35
	40mm	0.750"	ICHD-60-40
	60mm Backer		IBHD-60

50mm Width Heads Available. 1-1/4" Bore Heads Available. Call for details.



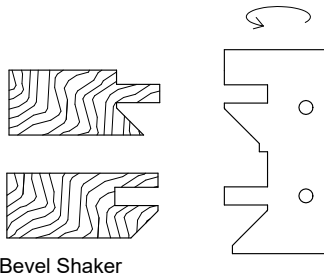
T&G Flooring Knives
(Face Down Shown)

HD Stock Profiled Insert Knives

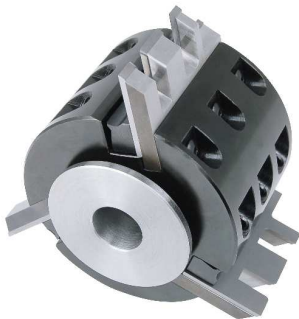
Description	Knife / Head Width	Part #
T&G Flooring - Face Up - Knife	60mm	ICHD-60-TGU
T&G Flooring - Micro Bevel - Face Up - Knife	60mm	ICHD-60-TGU-MB
T&G Flooring - Face Up - Backer	60mm	IBHD-60-TGU
T&G Flooring - Face Down - Knife	60mm	ICHD-60-TGD
T&G Flooring - Micro Bevel - Face Down - Knife	60mm	ICHD-60-TGD-MB
T&G Flooring - Face Down - Backer	60mm	IBHD-60-TGD

Micro Bevel Knives use the same Backers as square face flooring.

MINI-HD MULTI-PROFILE INSERT HEADS FOR SHAPERS

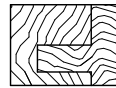


Bevel Shaker

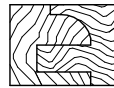


Mini-HD Multi-Profile Insert Heads for Shapers

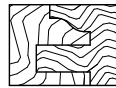
Designed to be used on a spindle shaper; these versatile heads are ideal for projects including end work on flooring as well as cope and stick cabinet door profiles. A feature of 60mm wide heads is the ability to fit two profiles on one knife. It's like getting two knives for the price of one! Mini-HD Heads will accept the same knives and backers as the larger 3-Wing HD MP Moulder Heads.



10-009
Shaker



10-010



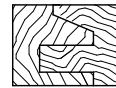
10-020



10-030



10-040



10-050



10-009 Eased



10-010 Eased



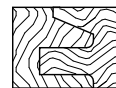
10-020 Eased



10-030 Eased



10-040 Eased



10-050 Eased

Mini-HD Multi-Profile Insert Head (3-Wing) & Knives

60mm Head & Knife Width	60mm Width, 3.5" Minor Dia.		Part #
	1-1/4" Bore Head		IHHD-60-1.25SD
	Knife Height	Depth of Cut	Part #
	25mm	0.375"	ICHD-60-25
2-1/4" Max Wood Thickness	30mm	0.500"	ICHD-60-30
	35mm	0.625"	ICHD-60-35
	40mm	0.750"	ICHD-60-40
	60mm Backers		IBHD-60

60mm cutting length allows 2 profiles to fit in each knife.

Carbide Tipped Wing Cutters to PCD Diamond Cutter Heads

We have solutions to tool up complex door and window component manufacturing from profile ground wing cutters to insert type cutterheads in hydro or straight bore to fit your moulder, tenoner, or CNC router. If you need extended tool life in MDF or abrasive materials, PCD diamond may be the right choice. Diamond tooling can offer run times over 100 times longer than the best grades of carbide. The most common tools made with diamond tips are router bits, saws, groovers, and custom profile flooring cutter heads. We custom design and manufacture the best tool for each project to ensure high performance. Tools are designed based on an evaluation of your machine and material cut; then a detailed CAD conceptual drawing is used to illustrate the tool for your pre-manufacturing approval.



Cope & Pattern Cutters

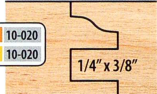


Raised Panel Shaper Cutter

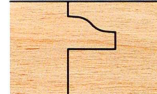


Cope & Pattern
3/4" x 1-1/8" Material

M C 50-020 P K 10-020
M T 50-020 P T 10-020



Glass Panel
3/4" x 1" Material



Tongue & Groove
3/4" Material



PRODUCT ORDER CODE

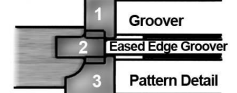
M C 00-000 P C 00-000
M T 00-000 P T 00-000

M - MINI-PRO (3/4" Bore)
P - PRO-LINE (1-1/4" Bore)
C - Carbide Tip (Orange)
T - T-Alloy Tip (Yellow)

Cope



Pattern



REF. ENGRAVERS, INSERT SIDE HEADS & MP KNIVES



These insert knife groovers are to use on the first bottom spindle next to your spiral head to true stock prior to the fence side head. Engravers cut 12.5mm deep and up to 12mm wide. Call for quotes on made to order engravers.

Reference Engravers

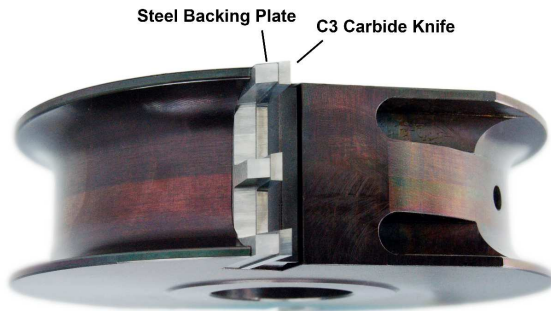
Cutting Diameter	Cutting Length	# of Rows of Knives	Standard Bore	Part #
150mm	12mm Kerf	3 + 3 Spurs	1-1/2"	MRE1503-1.5
150mm	12mm Kerf	3 + 3 Spurs	40mm	MRE1503
165mm	12mm Kerf	3 + 3 Spurs	1-13/16"	MRE1653



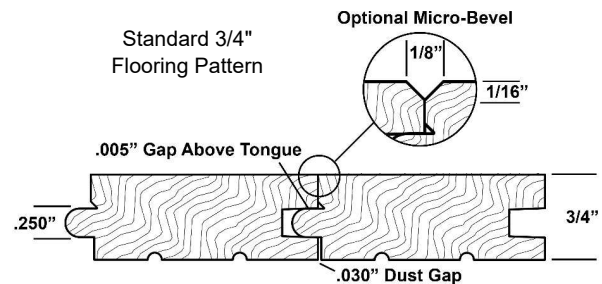
Turnable Knife Insert Side Heads

Knife Cutting Length	Cutting Diameter	# of Knives	Bore Size	Part #
50mm (2")	125mm	4 w/ Side Spurs	1-1/4"	IC-125-4-50-1.25
50mm (2")	125mm	4 w/ Side Spurs	1-1/2"	IC-125-4-50-1.5
50mm (2")	125mm	4 w/ Side Spurs	40mm	IC-125-4-50-40
50mm (2")	125mm	4 w/ Side Spurs	1-13/16"	IC-125-4-50-1.813
Spare Knives -- 50mm x 12mm x 1.5mm				IC-151250

We offer several styles of insert knife cutter heads, made from 6061-T6 aircraft grade aluminum, for economical surfacing of material on smaller moulders and planers. Heads come with or without side cutting spurs (2 each side) for dado and rabbet cutting. Once the knives dull, you simply turn the blade around to the next sharp cutting edge - 2 or 4 life cutting edges. Once all usable cutting edges are dull, a new low cost long wearing carbide knife is quickly inserted. No need to purchase expensive sharpening equipment. This option offers one of the lowest cost ways to size and surface hardwoods. Call for additional prices. Heads come with set of knives. Spare knives on pages 22-23.



*Face Down, Groove to the fence.



Backers



Knives

Knives & Backers for the discontinued old style multi-profile insert head design. Replaced by the Heavy Duty (HD) Multi-Profile Insert Head & Knife system. Heads require steel backing plates that are ground to your pattern and used to support solid carbide knives. They are a one time purchase per pattern. Custom Pattern Inserts made for the same price.



T-Bushing to 1-1/4" ID to run on your shaper for end matching.

Stock Flooring Inserts - For Old Style Heads

Description	Part #
Tongue - 40 x 30 x 2.0mm Knife	IC-329291T
Groove - 40 x 30 x 2.0mm Knife	IC-329292G
Tongue (Micro Bevel) - 40 x 30 x 2.0mm Knife	IC-329365T
Groove (Micro Bevel) - 40 x 30 x 2.0mm Knife	IC-329364G
Tongue Backer	IB-329291T
Groove Backer	IB-329292G
T-Bushings for Shaper	TB150
1-1/2" to 1-1/4" Reducer (2 Needed Per Head)	

Stock Flooring Inserts Run in Heads - 329349, 329288, 329289, 329290

SPLITTER SAWS & RADIUS EASED EDGE CUTTERS

Splitter Saw & Radius Eased Edge Cutters For Moulders

"Splitter Heads" Rip, Groove, and Surfacing in One Pass

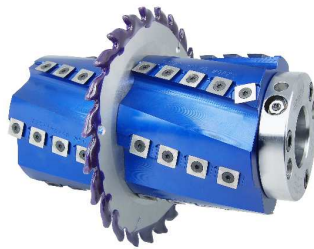
Don't have enough spindles? We offer custom made heads that can combine a moulder head and a carbide tipped saw to allow you to rip stock and surface on the same spindle, or allow you to ease edges and rip for square production. Also commonly used to cut a weather strip groove without the hassle of breaking moulder knife splitters - 0-deg. radial carbide tip saws cut smooth grooves and last thousands of feet longer. Call for prices and details for your specific application. We can provide good solutions for nearly any product run.



Splitter Saws (Rip Saws)

Dia.	Kerf	Plate	Bore	Teeth	Tooth Type	Bolt Holes	Bolt Circle	Part #
165mm	4mm	3.0mm	1-1/2"	12	Flat Top	3 Bolt Holes 10.5mm Dia.	64mm	Saw SB-1651238
			40mm	12	Flat Top	3 Bolt Holes 10.5mm Dia.	64mm	Saw SB-1651240
			1-13/16"	12	Flat Top	3 Bolt Holes 10.5mm Dia.	64mm	Saw SB-1651246
180mm	2.8mm	2.0mm	50mm	24	Triple Chip	3 Bolt Holes 10.5mm Dia.	64mm	Saw SB-18050
			60mm	24	Triple Chip	3 Bolt Holes 10.5mm Dia.	74mm	Saw SB-18060
			65mm	24	Triple Chip	3 Bolt Holes 10.5mm Dia.	80mm	Saw SB-18065
200mm	1.8mm	1.2mm	65mm	42	Triple Chip	3 Bolt Holes 10.5mm Dia.	80mm	Saw-P200Z421865
200mm	2.6mm	1.88mm	65mm	48	Triple Chip	3 Bolt Holes 10.5mm Dia.	80mm	Saw-P200Z482563
			2.813"	48	Triple Chip	3 Bolt Holes 10.5mm Dia.	80mm	Saw-P200Z4821825
200mm	2.8mm	2.0mm	50mm	24	Triple Chip	3 Bolt Holes 10.5mm Dia.	64mm	Saw SB-20050
			65mm	24	Triple Chip	3 Bolt Holes 10.5mm Dia.	80mm	Saw SB-20065

Contact us regarding tooling to put eased edges on the opposite side of materials.



A typical assembly includes a Titan hydro sleeve, saw, eased edge cutters, spacers, and bolts.

Refer to catalog pages for sleeves and spacers



0.125" Radius Eased Edge Cutters RH & LH

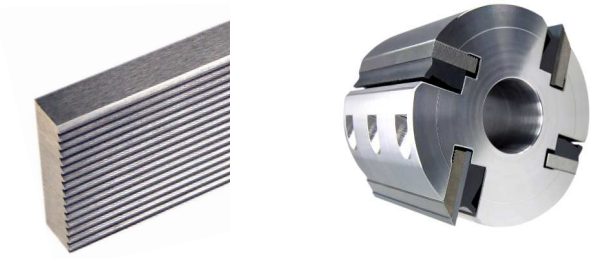
	Diameter	Width	Bore	Teeth	Part #
Left Hand	120mm	4.75mm	65mm	8	Saw SB-S001
Right Hand	120mm	4.75mm	65mm	8	Saw SB-S002
Left Hand	120mm	4.75mm	50mm	8	Saw SB-S003
Right Hand	120mm	4.75mm	50mm	8	Saw SB-S004
Left Hand	5.684"	4.75mm	65mm	8	Saw SB-S005
Right Hand	5.684"	4.75mm	65mm	8	Saw SB-S006

Warning: The use of splitter saws on moulders requires you to have anti-kickback devices installed to prevent possible injury to the infeed operator.



MOULDER HEAD ACCESSORIES

Filler Wedge Bars



Filler Wedges cut and balanced in pairs to fit popular cutterhead lengths are available. They are used to fill unused pockets in a cutterhead preventing bore distortion caused by uneven tightening of the gib screws.

Pre-Cut & Full Bar Filler Wedges

Thick	Height	Length	Part #
5/16"	1"	50mm	SCW311--50
5/16"	1"	60mm	SCW311--60
5/16"	1"	80mm	SCW311--80
5/16"	1"	100mm	SCW311--100
5/16"	1"	130mm	SCW311--130
5/16"	1"	150mm	SCW311--150
5/16"	1"	180mm	SCW311--180
5/16"	1"	230mm	SCW311--230
5/16"	1"	310mm	SCW311--310
5/16"	1"	25"	SCW311
1/4"	3/4"	25"	SCW251
10mm	1"	25"	SCW391

T-Bushings



Precision steel bushings used for running larger bore heads on shapers and small spindle moulders.

Flanged Reducing Bushings

Outer Dia.	Inner Dia.	Flange Dia.	Part #
1-1/4"	1"	2-1/8"	TB125
1-1/2"	1-1/4"	2-1/8"	TB150
40mm	1-1/4"	2-1/8"	TB40
1-13/16"	1-1/4"	2-1/8"	TB1813
1-13/16"	1-1/2"	2-1/8"	TB1813-1.5
2-1/8"	1-13/16"	2-3/4"	TB2125-1.813

Insertion Length 1/2". Need 2 Per Head.

Spindle Spacers



Accurate steel spacers for filling the space between a shorter head or tool and lock nut on the spindle.

Spindle Spacers

Outer Dia.	Bore	Length	Part #
60mm	1-1/4"	25mm	SP125-25
60mm	1-1/4"	48mm	SP125-48
80mm	1-1/2"	25mm	SP150-25
80mm	40mm	25mm	SP40-25
80mm	1-13/16"	25mm	SP181-25

Cutterhead Safety Covers

NEW!



Features

- Head covers protect Edges and Employees
- Adjustable fit for most common diameter heads
- Available for head widths 2"-15" wide
- ANSI Level 6 cut resistant material
- High Vis material
- Quick and easy application
- Suitable for eased edge / side and flat knife planer heads



MOULDER HEAD ACCESSORIES & PARTS

Self Centering Sleeve (SCS) Bore Moulder Heads

For older domestic made moulders we offer mechanical centering cutter heads; Self centering sleeves (SCS), Cone & Collet, Straight, Taper bore heads. We can provide heads with custom features like: Contour O.D. heads, shear cutting angles, saw style splitter heads for in line rips or notching, taper diameter heads for Crown mouldings, and more. We offer spare parts, custom made gibs, gib screws, and used heads.



Moulder Head Accessories: Gibs, Screws, Hydro Sleeve Parts, Repairs

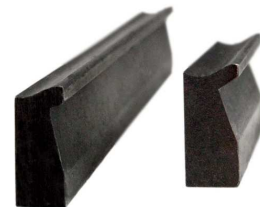
We offer replacement parts and can service damaged heads. We offer metric thread 1/4" square head gib screws to replace your existing European metric Allen gib screws - eliminates cleaning plugged pine pitch from allen screws! We also offer Wrenches, Sleeve kits, Spare SCS sleeves and nuts, Safety Lock Rings, Spindle spacers, and much more.



Safety Lock Collars



Grease Fittings



Gibs



Gib Screws

Moulder Head Accessories	
Accessory Item	Part #
Safety Lock Collars - for Hydro-Loc Heads (Ref. pg. 40)	LC(Size)
Wanner High Pressure Grease Gun - 600 Bar for Hydro-Loc Heads	M-06-32391.21
Metric High Press Fitting - Inlet (Zerc) with O-Ring (10mm) Wanner Part # 32310.00	MH-GF-600-N
Metric High Press Fitting - Outlet Release Valve with Metric Seal O-Ring Wanner Part # 32320.00	MH-RV-600-N
3mm Set Screw for Metric Release Valve	MH-RV-SS
5/32" Steel Ball for Either Release Valve	MH-RV-SB
AceCo Style High Press Fitting - Inlet (Zerc) 1/8" NPT	GR-FIT-1634B
AceCo Style High Press Fitting - Outlet Release Valve	BF-14-001-2
T-Handle Wrench - 6mm Allen Key Gib Screws	MH-M6-AK
M10 x 20 Allen Head Gib Screw	MH-M10-GS
M12 x 20 Allen Head Gib Screw	MH-M12-GS

Call for prices on other spare parts like gibs, sleeves, and other items.



ETP Hydro-Grip Sleeves
Call for more information.



HYDRO-LOCK SLEEVES: B STYLE



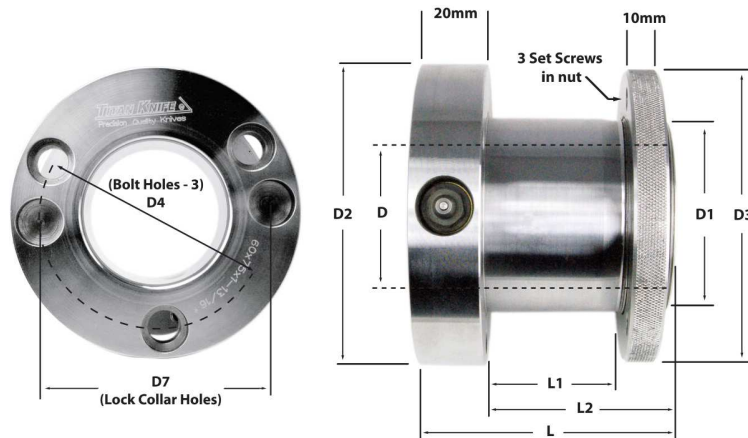
Hydro-Sleeves for Cutterhead Centering and Saw Sleeves



High precision, lower cost solution for centering insert cutterheads, spiral heads, and saw blades on production moulders, tenoners, and rip saws. CNC machined from high strength alloy steel for long wear life. Titan sleeves are dimensional matches to the popular ETP™ brand, and use a welded sleeve design. Custom size sleeves offered - call for prices. Custom size sleeves can be made to meet your special requirements. Volume discounts are offered on 5+ pcs, mix & match sizes. Many other types of Hydro Sleeves offered. Please contact us to receive a dedicated hydro sleeve catalog.

Titan Hydraulic-Lock Welded Sleeves Style B:

D Bore Dia.	D1 Shank Dia.	D2 / D3 Flange & Nut Dia.	D4 / D7 Bolt Circle Nut Dia.	H Bolt CB Depth	L Overall Length	L1 Usable Capacity	L2 Shank Length	Part #
1.50"	50	83	64	9	85	50	65	B:1-1/2/50-85T
1.50"	50	83	64	9	135	100	115	B:1-1/2/50-135T
1.50"	50	83	64	9	185	150	165	B:1-1/2/50-185T
1.813"	60	93 / 90	74	8.5	75	40	55	B:1-13/16/60-75T
1.813"	60	93 / 90	74	8.5	115	80	95	B:1-13/16/60-115T
1.813"	60	93 / 90	74	8.5	140	105	120	B:1-13/16/60-140T
1.813"	60	93 / 90	74	8.5	190	155	170	B:1-13/16/60-190T
1.813"	65	98	80	9	85	50	65	B:1-13/16/65-85T
1.813"	65	98	80	9	135	100	115	B:1-13/16/65-135T
1.813"	65	98	80	9	185	150	165	B:1-13/16/65-185T
1.813"	65	98	80	9	235	200	215	B:1-13/16/65-235T
2.125"	65	98	80	9	85	50	65	B:2-1/8/65-85T
2.125"	65	98	80	9	135	100	115	B:2-1/8/65-135T
2.125"	65	98	80	9	185	150	165	B:2-1/8/65-185T
2.125"	65	98	80	9	235	200	215	B:2-1/8/65-235T



Steel spacers for the hydro-sleeves to allow indexing rip saws apart or to fill excess sleeve capacity. Spacer nuts have 3 bolt holes with 3/8" NC threads. Index spacers are drilled for (3) 10.5mm holes.

Safety Lock Collars

Lock Collar Bore Dia.	Rectangular Part #	Round Part #
1-1/2"	LC150	LC150R
1-13/16"	LC1813	LC1813R
2-1/8"	LC2125	LC2125R
40mm	LC40M	LC40MR
50mm	LC50M	LC50MR

Rectangular safety lock collars are used on hydro-lock moulder heads. Round safety lock collars are used with tool sleeves.



Saw Index Fillers / Spacers

Thickness	Bore x Dia.	Part #
1/16"	50mm x 83mm	Spacer-D-50/83-1/16
1/16"	60mm x 93mm	Spacer-D-60/93-1/16
1/16"	65mm x 98mm	Spacer-D-65/98-1/16
1/8"	50mm x 83mm	Spacer-D-50/83-1/8
1/8"	60mm x 93mm	Spacer-D-60/93-1/8
1/8"	65mm x 98mm	Spacer-D-65/98-1/8
1/4"	50mm x 83mm	Spacer-D-50/83-1/4
1/4"	60mm x 93mm	Spacer-D-60/93-1/4
1/4"	65mm x 98mm	Spacer-D-65/98-1/4
1/2"	50mm x 83mm	Spacer-D-50/83-1/2
1/2"	60mm x 93mm	Spacer-D-60/93-1/2
1/2"	65mm x 98mm	Spacer-D-65/98-1/2
1"	50mm x 83mm	Spacer-D-50/83-1
1"	60mm x 93mm	Spacer-D-60/93-1
1"	65mm x 98mm	Spacer-D-65/98-1
1/4" Nut	50mm x 83mm	Spacer-D-50/83-Nut
1/4" Nut	60mm x 93mm	Spacer-D-60/93-Nut
1/4" Nut	65mm x 98mm	Spacer-D-65/98-Nut

HYDRO-LOCK SLEEVES

Titan Hydro-Lock Sleeves are a welded design for the highest performance and are dimensional matches to the popular European style. **Ask about our Hydro-Sleeve Catalog for detailed listings.**



The BI type Hydro-Lock Sleeve is designed for interchangeable tool assembly which can easily be switched between the tools such as straight bore cutterheads, saw blades on moulders, tenoners, and rip saws. No grease pump needed.



The C type Hydro-Lock Sleeve is designed for interchangeable tool assembly which can easily be switched between the tools.



The CI type Hydro-Lock Sleeve is designed for interchangeable tool assembly which can easily be switched between the tools.



The CIL type Hydro-Lock Sleeve is designed for interchangeable tool assembly which can easily be switched between the tools and includes an integral aluminum safety ring. Screw pressurizing system.



The A type Hydro-Lock Sleeve is designed for permanent assembly for different kind of tools.



The AI type Hydro-Lock Sleeve is designed for permanent assembly for different kind of tools. Screw pressurizing system.



The EIA type Hydro-Lock Sleeve is designed for permanent tool assembly and machines with hexagonal spindle profile. Double end tenner / PCD tool.



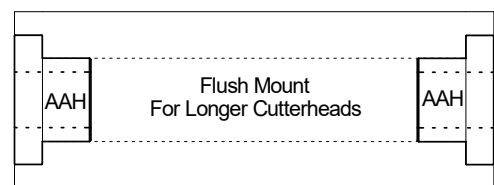
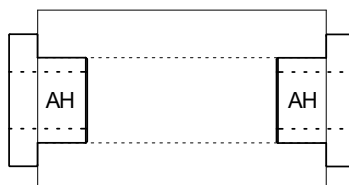
The EIB type Hydro-Lock Sleeve is designed for interchangeable tool assembly and machines with hexagonal spindle profile.



The EIC type Hydro-Lock Sleeve is designed for interchangeable tool assembly and machines with hexagonal spindle profile.



AIL type Hydro-Lock Sleeve.



HIGH PRESSURE GREASE GUN - NEWEST MODEL



Wanner Model 32391 Offers Best Reliability:

The newest Swiss made high pressure grease gun has an operating pressure of 600 bar and are used to pressurize any hydro-locking head or sleeve. This version has a center filtered aspiration valve, replaceable pressure valve seat, 1,000 bar pressure hose, improved pressure release valve, lighter weight, plastic handle, and more. Spare replacement parts for the older and new version pumps are available. Also offered, an alternate 15,000 psi USA made lever operated pump, heavy duty built with fewer parts.



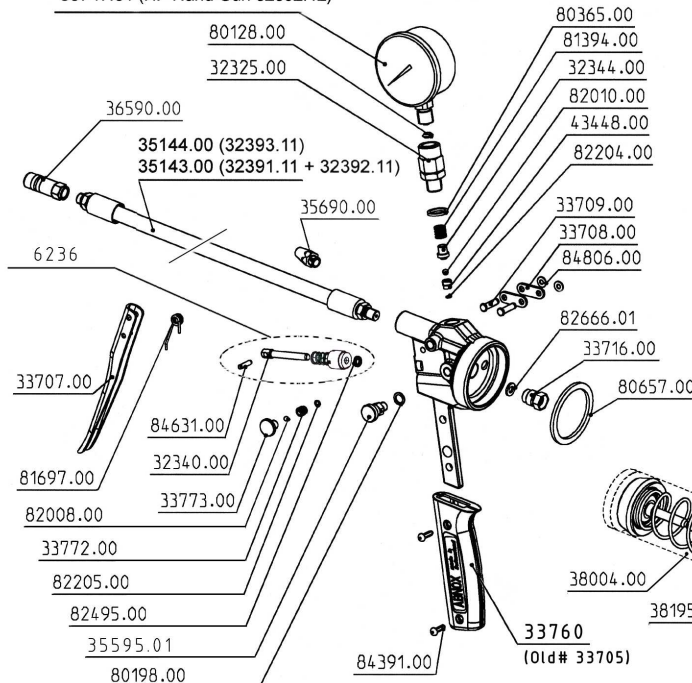
600 Bar Model Grease Gun

Description	Part #
Wanner Pump w/ Rod Barrel	M-06-32391.21
Wanner Pump w/ Chain Barrel	M-06-32391.20
Spare Parts Kit - Rod Style 33758, 36590, 38146, 43448, 80657, 81697, 82010, 82204, 82495, 83398, 84808	M-06-33795
Spare Parts Kit - Chain Style 36590, 80657, 43448, 2pcs of 82205, 82495, 83576, 82008, 33772, 33773	M-06-33796
Rod Barrel Assembly	M-06-38195.04
Chain Barrel Assembly	M-06-38280.05
Valve Head Complete w/ Gage (Upgrade Your Old Head)	M-06-33731.00-N
Jet Lube - 14 oz. Plastic Tube High Pressure Grease Tube	M-06-F01



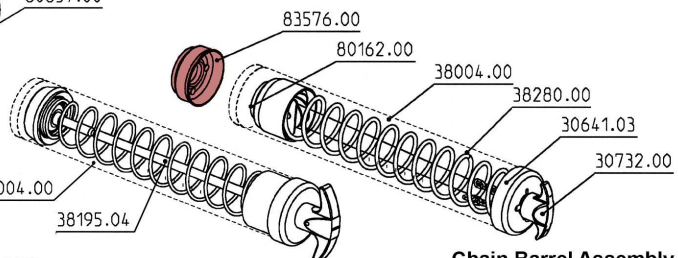
83746.01 (HP Hand Gun 32391.10 + 32393.10)

83747.01 (HP Hand Gun 32392.12)



Spare Parts for Newest Pump (32391)

Part #	Description
M-06-6236	Piston Kit with Spring & Seal
M-06-32308.01	Pressure Release Screw
M-06-32325	Rotary Coupling
M-06-32340	Piston
M-06-32344	Valve Pin
M-06-33707	Lever
M-06-33708	Link Plate
M-06-33709	Bolt for Lever / Link Plate
M-06-33716	Non-Return Valve
M-06-33731.00-N	New Valve Head
M-06-33758	Pres. Rel. Valve Kit (Fixes Leaking Pressure at Thumb Screw)
M-06-33760.00	Plastic Handle - Complete
M-06-33772	Special Valve Seat for Pre. Rel.
M-06-33773	Special M8 Short Pre. Screw Rel.
M-06-35143.00	12" Hose 1,000 Bar Rated (standard)
M-06-35144.00	20" Hose - Heavy Duty (upgrade)
M-06-35595.01	Air Release Valve
M-06-35690	Filler Cap
M-06-36590	Hydraulic Connector
M-06-38004	Barrel - Steel Tube Only
M-06-38195	Rod Barrel w/ Steel Tube
M-06-38195.04	Rod Barrel Inside Parts
M-06-43448	Valve Seat
M-06-80128	Brass Crush Washer
M-06-80198	Cu-Joint Seal
M-06-80365	Brass Washer
M-06-80657	Barrel Seal - Flat O-Ring
M-06-81394	Bigger Pressure Spring
M-06-81697	Smaller Torsion Spring
M-06-82008	5/32" Steel Ball
M-06-82010	3/16" Steel Ball
M-06-82014	6mm Steel Ball Release Screw
M-06-82204	O-Ring for Gage (new)
M-06-82205	O-Ring for Pressure Release (old)
M-06-82250	O-Ring for Non-Return Valve
M-06-82495	X-Ring Seal for Piston
M-06-82666.01	Copper Seal
M-06-83576	Piston Seal (Red)
M-06-83746	600 Bar Gage
M-06-84391	Screw for Handle Grip
M-06-84630	Prim Pin
M-06-84631	Spiral Pin for Piston
M-06-84806	Snap Ring for Handle

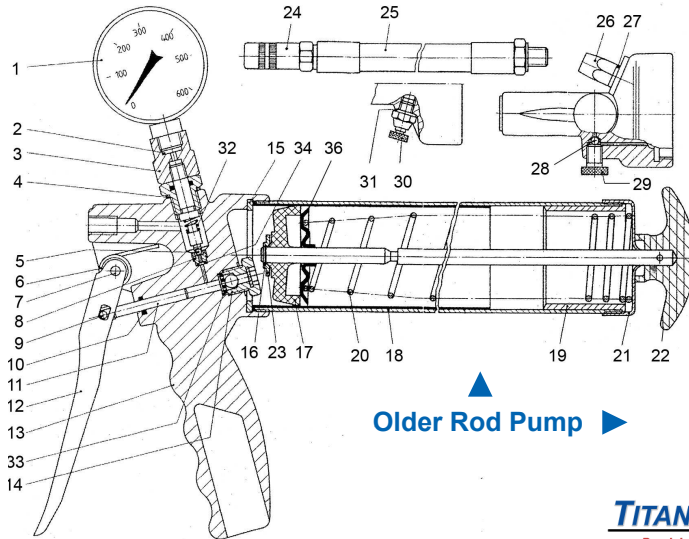


Rod Barrel Assembly

Chain Barrel Assembly



HIGH PRESSURE GREASE GUN - OLDER MODEL PARTS



Older Rod Pump

TITAN KNIFE
Precision Quality Knives

Spare Parts for Older Chain Pump

Pos. #	Description	Part #
1	Gage 600 Bar	M-06-83746
2	Washer	M-06-80128
3	Rotary Coupling	M-06-32325
4	Washer	M-06-80365
5	Pressure Spring	M-06-81384
6	Torsion Spring	M-06-81699
7	Spiral Pin	M-06-84684
8	Valve Plug	M-06-30643
9	Spiral Pin	M-06-84630
10	X-Ring Seal	M-06-82495
11	Piston	M-06-32340
12	Lever	M-06-30647.01
13	Valve Head	N/A
14	Non-Return Valve	M-06-30508
15	Barrel Seal	M-06-80657
16	Cylinder	M-06-38004
17	Piston Seal (Red)	M-06-83576
18	Joint Pad	M-06-80162
19	Guide	M-06-32329
20	Support	M-06-39075
21	Pressure Spring	M-06-81763
22	Chain .6m	M-06-83901
23	Spiral Pin	M-06-84681
24	End Cover	M-06-30657
25	Lining	M-06-39096
26	Flat Washer	M-06-82741
27	Pressure Spring	M-06-81656
28	Handle Kit	M-06-30732.00
29	Hydraulic Connector	M-06-36590
30	Hose - 12" Long	M-06-35143.00
31	Cover Plug	M-06-30642
32	Washer	M-06-80266
33	Press. Rel. Screw	M-06-32308
34	3/16" Steel Ball	M-06-82010
35	Air Release Valve	M-06-35590
36	Washer - Joint Seal	M-06-80198

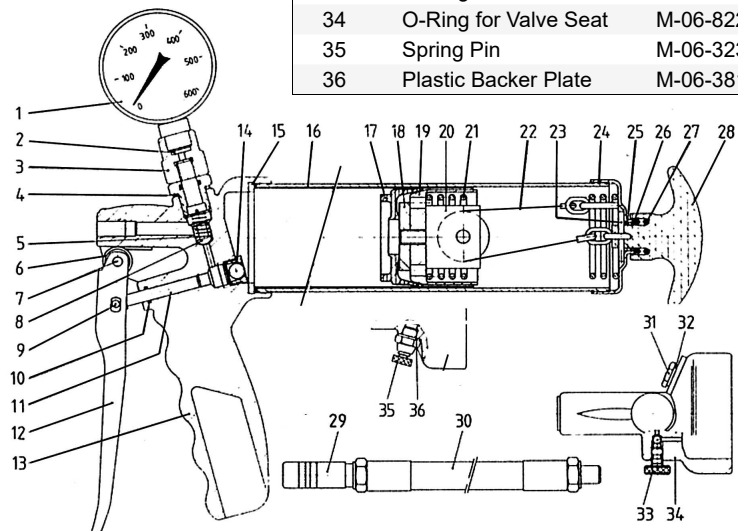
"Can't Fix it" We rebuild grease guns:

If you still are not able to fix your grease gun, send it to us for repair. Call for details on this service work. We are an Authorized Official Factory Service Center.

Older Pump Parts Kit:
Includes 82495, 80657, 30643, 32308, 81384, 30508, 83576

Part #
M-06-33794

Older Chain Pump



Parts for older Wanner pumps: We offer spare parts to the common Abnox / Wanner chain & rod barrel type grease guns purchased from Weinig, Wadkin, or Global. Call for assistance in trouble shooting & parts not shown.

Spare Parts for Older Rod Pump

Pos. #	Description	Part #
1	Gage 600 Bar	M-06-83746
2	Washer	M-06-80128
3	Rotary Coupling	M-06-32325
4	Washer	M-06-80365
5	Steel Ball	M-06-82010
6	Torsion Spring	M-06-81699
7	Spiral Pin	M-06-84684
8	Valve Seat	M-06-43448
9	Prim Pin	M-06-84630
10	X-Ring Seal	M-06-82495
11	Piston	M-06-32340
12	Lever	M-06-30647.01
13	Valve Head	N/A
14	Aspiration Valve	M-06-33716
15	Barrel Seal	M-06-80657
16	Supporting Disc	M-06-38080
17	Low Pres. Piston	M-06-38075
18	Cylinder	M-06-38004
19	Insert	M-06-38089
20	Pressure Spring	M-06-81771
21	Cover	M-06-38013
22	Piston Rod	M-06-38078
23	Security Disc	M-06-84808
24	Hydraulic Connector	M-06-36590
25	Hose - 12" Long	M-06-35143.00
26	Filler Cap	M-06-35690
27	Seal	M-06-80266
28	Pressure Rel. Screw	M-06-32308.01
29	3/16" Steel Ball	M-06-82010
30	Air Release Valve	M-06-35595.01
31	Cu-Joint	M-06-80198
32	Pressure Spring	M-06-81358
33	O-Ring for Non-Return	M-06-82250
34	O-Ring for Valve Seat	M-06-82205
35	Spring Pin	M-06-32339
36	Plastic Backer Plate	M-06-38148.01

VITRIFIED PROFILE GRINDING WHEELS



The full line of moulder knife profile grinding wheels and can suggest a grinding wheel to match the grinderman's experience, the grinders RPM, & the steel hardness. Normally the harder the wheel (and the faster the RPM) the longer wearing the wheel is, yet harder wheels load quicker & can burn knives. Also available are coarse wheels for roughing profiles & fine wheels for resharpenering. A coarse wheel at a higher RPM can also help provide a finer finish grind.

Now offering European & Lower Cost USA made wheels.



	Dia.	Thick	Bore	Color	Grit / Hardness	Description	Popular Wheel	Part #
Weinig Grinders	225mm	5mm	60mm	White	54 - I	Hogging Wheel / Cool Grinding		GW-3001
	225mm	5mm	60mm	Gray	54 - H	USA version	●	GW-3200A-H
	225mm	5mm	60mm	Gray	100 - H	Finish Grinding - Cooler Wear		GW-3202
	225mm	5mm	60mm	Pink	60 - K	All Purpose - Fast Grinding		GW-3300
	225mm	5mm	60mm	Blue	54 - I	Ceramic - USA version		GW-3400a
	225mm	5mm	60mm	Blue	54 - K	Norton SG - Hard / Long Life		STR08.875188-02
	225mm	5mm	60mm	Purple	54 - J	Ceramic Blend - A Favorite	●	GW-3500
	225mm	5mm	60mm	Purple	100 - I	Fine Detail - Long Life		GW-3502
Wadkin Grinders	225mm	5mm	1-1/4"	White	54 - H	USA version		GW-4020a
	225mm	5mm	1-1/4"	Gray	54 - H	USA version	●	GW-4050a
	225mm	5mm	1-1/4"	Blue	54 - J	X-L Wearing Ceramic - USA		GW-4450A
	225mm	5mm	1-1/4"	Purple	54 - J	Long Wear	●	GW-4500A
Foley, United, Nielsen, & Western Grinders	8"	1/8"	1-1/4"	White	60 - H	Fine Detail Finish Grind		GW-6060
	8"	1/8"	1-1/4"	Pink	60 - I	Roughing Wheel		GW-6075
	8"	1/8"	1-1/4"	Blue	60	Long Wearing Ceramic		GW-6070
	8"	3/16"	1-1/4"	White	46	Cool Rough Grinding		GW-6065
	10"	1/8"	1-1/4"	White	60 - J	Oxide Wheel - Fast / Cool		GW-5020
	10"	1/8"	1-1/4"	Pink	60 - I	Oxide Wheel - Long Wearing	●	GW-5050
	10"	1/8"	1-1/4"	Blue	60 - H,J	Long Wearing Ceramic		GW-5000A
	10"	3/16"	1-1/4"	White	46 - K	Roughing Wheel		GW-5100
	10"	3/16"	1-1/4"	Pink	60 - J	Multi-Purpose		GW-5200
	10"	3/16"	1-1/4"	Blue	46 - K	Long Wearing Ceramic		GW-5500A
	10"	3/16"	1-1/4"	Purple	46-60 - H	Harder Ceramic Wheel		GW-5520
	10"	1/4"	1-1/4"	White	60 - K	Straight Knives		GW-5601

COLOR INDEX

White Grain Aluminum Oxide:
Very Fast & cooler grinding, but faster wheel wear.

Premium Gray Aluminum Oxide:
Fast grinding, longer wear than white grain.

Pink Chromium Oxide:
Longer wearing than Gray wheel - little harder (better value).

Blue Ceramic:
Long wearing - about twice the life of white oxide wheels.

Purple Ceramic:
Ceramic & Pink grain mix - wears like Blue Ceramic but at a lower cost (better value).

Call for additional sizes not shown above.

Weinig Grinders: Rough grind patterns at about 1,800 rpm (slow rpm if knife burns). As wheel wears RPM can be increased to 2,100 RPM. For finer finish grinds with a coarse wheel increase RPM to 2,600+ RPM.

CBN & DIAMOND PROFILE & CUTOFF WHEELS



Super Abrasive profile wheels offer the longest wheel wear and the finest finishes. Listed are the most common stock wheels, we can also make custom wheels to your grit and hardness spec's.

CBN

Borazon, use to finish grind and sharpen steel knives, run at fastest RPM possible, 3,000+.

NCD Diamond

Use to finish grind and resharpen solid carbide knives, run at 3,000 rpm max.

CDX Diamond

For carbide inlay knives; resist plugging with soft backing steel, 3,000 rpm max.



	Dia.	Thick	Bore	Description	CBN Part #	Diamond NCD Part #	Diamond CDX Part #
Weinig Grinders	8"	1mm	60mm	Radius Top	GW-8110	GW-9115	GW-9115X
	8"	1.5mm	60mm	Radius Top	GW-8115	GW-9191	GW-9191X
	8"	1.5mm	60mm	Square Top	GW-8114		
	8"	2mm	60mm	1mm Radius	GW-8200	GW-9202	GW-9202X
	8"	2mm	60mm	Square Top	GW-8205	GW-9206	GW-9206X
	8"	3mm	60mm	1.5mm Radius	GW-8300	GW-9302	GW-9302X
	8"	3mm	60mm	Square Top	GW-8305	GW-9306	GW-9306X
	8"	4mm	60mm	2mm Radius	GW-8400	GW-9402	GW-9402X
	8"	4mm	60mm	Square Top	GW-8405	GW-9406	GW-9406X
	6-1/2"	10mm	60mm	10mm Square Top Straight Knives	GW-8490	GW-9490	GW-9490X
Wadkin Grinders	8"	10mm	60mm	10mm Square Top Straight Knives	GW-8490-8		
	8"	2mm	1.25"	1mm Radius	GW-8308	GW-9308	< DMX Only
	8"	3mm	1.25"	1.5mm Radius	GW-8310	GW-9310	< DMX Only
	8"	3mm	1.25"	Square Top	GW-8315	GW-9316	< DMX Only
	8"	4.7mm	1.25"	With Radius	GW-8500	GW-9502	< DMX Only
Foley, United, Nielsen, & Western Grinders	8"	4.7mm	1.25"	Square Top	GW-8505	GW-9506	< DMX Only
	8"	1/16"	1.25"	.032" Radius	GW-8600	GW-9602	GW-9602X
	8"	1/16"	1.25"	Square Top	GW-8605	GW-9606	GW-9606X
	8"	1/8"	1.25"	.062" Radius	GW-8610	GW-9612	GW-9612X
	8"	1/8"	1.25"	Square Top	GW-8615	GW-9616	GW-9616X
	8"	1/4"	1.25"	Straight Knives Square Top	GW-8690	GW-9695	GW-9695X
	10"	1/16"	1.25"	Radius Top	GW-8700	GW-9703	< DMX Only
	10"	1/16"	1.25"	Square Top	GW-8705	GW-9706	< DMX Only
	10"	1/8"	1.25"	Radius Top	GW-8710	GW-9716	< DMX Only
	10"	1/8"	1.25"	Square Top	GW-8715	GW-9725	< DMX Only
	10"	.055"	1.25"	Carbide Cut-off Wheel - SQ Top		GW-9916	< DMX Only

≤100% concentration,
R-Hardness, 5/16" bond life.
Call for quantity discounts.
Custom grit wheels allow 4 weeks.



3F1 (radius) 3A1(square)
Domestic Profile Grinders

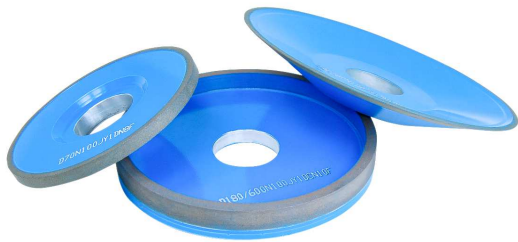
1F1 (radius) 1A1(square)
European Profile Grinders

Made to order Diamond and CBN wheels.

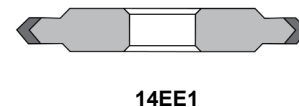
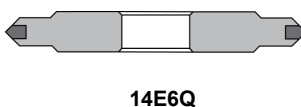
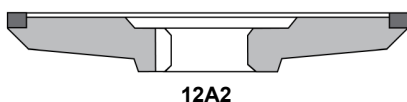
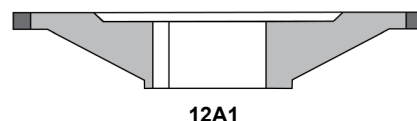
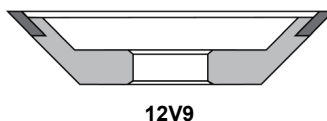
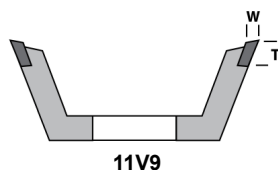
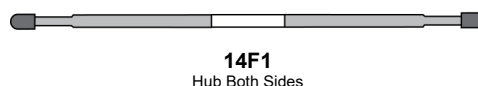
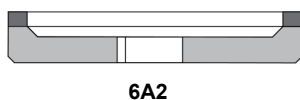
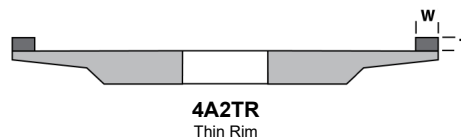
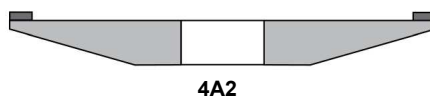
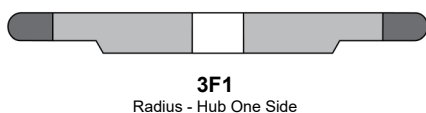
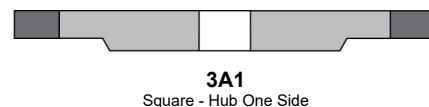
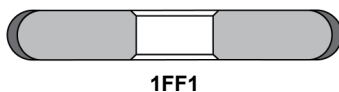
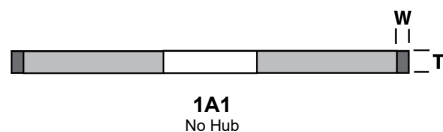
A huge selection of custom made long wearing diamond, CDX diamond, and CBN Borazon grinding wheels including nearly 1,000 different styles and combinations of custom specs to maximize life along with grinding finish. Quick deliveries on non-standard custom made wheels. Many ship the same day from stock. Call for prices on your high consumption wheels for the lowest prices, highest quality, and consistency. Private label available.



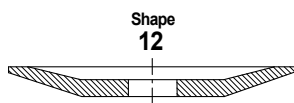
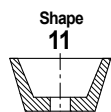
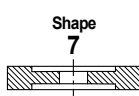
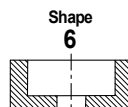
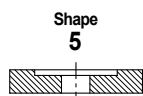
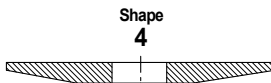
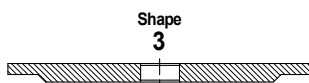
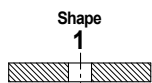
CBN & DIAMOND WHEELS - MADE TO ORDER



We offer a huge selection of custom made long wearing diamond, CDX diamond, and CBN Borazon grinding wheels including nearly 1,000 different styles and combinations of custom spec. grinding wheels to maximize wheel life and grinding finish to choose from. Quick deliveries on non-standard custom made wheels. Many wheels ship the same day from stock. Call for prices on your high consumption wheels for the lowest prices, highest quality, and consistency. Request our Diamond Wheel Catalog for more detailed information.



Grinding Wheel Spec Guide

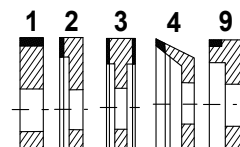


Bond Shapes



The second letter call out indicates the bond shape. (ie. 1A1)

Bond Location



The third number call out indicates the bond location. (ie. 1A1)

Core Shapes

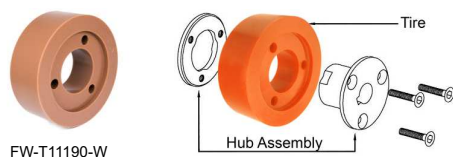
The first number call out indicates the core shape. (ie. 1A1)

POLYURETHANE & STEEL MOULDER FEED ROLLERS

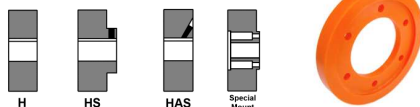
Most Weinig Moulders use one of three diameters: 140mm (5-1/2") or 170mm (6-11/16"). We also offer a 150mm diameter roller that some millworks use in place of the 140mm to increase the maximum feed speed. Re-coated tires can lower replacement costs.



The replaceable tire system offers quick change outs without the hassle of re-coating your old tire hubs. Most sizes in stock. Call for other sizes and types offered. Steel hubs are a one time purchase. Replacement tires can be stocked and changed quickly without having ship and wait for re-coated tires. When ordering please specify bore size (35mm or 30mm ID) and keyway size (10mm standard).



Roller Hub Mount Styles



Weinig, Leadermac, SCMI Solid Urethane Rollers

	Popular Roller	Wheel Size			Description	Part #
		Dia.	Thick	Bore		
Keyed Shaft		5-1/2"	3/4"	35mm	10mm Keyed Shaft	FW-R106T140
		5-1/2"	5/8"	35mm	10mm Keyed Shaft	FW-R42362007
		5-1/2"	1"	35mm	10mm Keyed Shaft	FW-R106T140-1
		5-1/2"	1-1/4"	35mm	10mm Keyed Shaft	FW-R143618007
	•	5-1/2"	2"	35mm	10mm Keyed Shaft	FW-R105T140
		6-5/16"	1"	35mm	Keyed Shaft	FW-R107T160
		6-5/16"	2"	35mm	Keyed Shaft	FW-R104T160
		6-11/16"	1"	35mm	Keyed Shaft	FW-R107T170
Bolt-On		6-11/16"	2"	35mm	Keyed Shaft	FW-R104T170
		3"	5/8"	30mm	Middle Hold Down Roll	FW-R95YE0014
		5-1/2"	1/2"	30mm	Wide Cup - Bolt-On	FW-R14192021
		5-1/2"	3/4"	35mm	Leadermac Style	FW-R80OR0028-35
	•	5-1/2"	3/4"	30mm	Wide Cup - Bolt-On	FW-R80OR0028-30
		5-1/2"	1-1/2"	30mm	Wide Cup - Bolt-On	FW-R14192018
		6-11/16"	3/4"	35mm	3-Bolt Flange Style	FW-R80OR0044

Replaceable Tires & Steel Hubs

	Popular Tire	Wheel Size			Part #	Hub Part #
		Dia.	Thick	Bore		
Keyed Shaft		5-1/2"	3/4"	35mm	FW-T11370	FW-H17192
		5-1/2"	1"	35mm	FW-T11150	FW-H16856
		5-1/2"	1-1/4"	35mm	FW-T11104	FW-H16756
	•	5-1/2"	2"	35mm	FW-T11190-W	FW-H16858
	•	5-1/2"	2"	35mm	FW-T11190	FW-H16858
		5-1/2"	2"	25mm	FW-T11625	* for Wadkin
		5-15/16"	3/4"	35mm	FW-T11417	FW-H17192
		5-15/16"	2"	35mm	FW-T11132	FW-H16858
		6-5/16"	3/4"	35mm	FW-T11490	FW-H17000
		6-5/16"	2"	35mm	FW-T10770	FW-H16295
		6-11/16"	3/4"	35mm	FW-T11610	FW-H17000
		6-11/16"	2"	35mm	FW-T10950	FW-H16295F
						FW-H16260
Bolt-On	•	5-1/2"	3/4"	30mm	FW-T11370	FW-H17340
					6-Bolt Holes	3 Mounting Holes

* Wadkin 108 / 3" Bore

Steel Tooth Feed Rollers

	Popular Roller	Wheel Size			Description	Part #
		Dia.	Thick	Bore		
Keyed Shaft		5-1/2"	5/8"	35mm	Keyed Shaft	FW-S23291017
		5-1/2"	5/8"	35mm	Extended Hub Keyed	FW-S143618002
		5-1/2"	3/4"	35mm	Keyed Shaft	FW-S8001
		5-1/2"	1-1/4"	35mm	Keyed Shaft	FW-S143618010
	•	5-1/2"	2"	35mm	Keyed Shaft	FW-S8006
		170mm	50mm	35mm	Keyed Shaft	FW-S90170
Bolt-On		5-1/2"	3/8"	30mm	Wide Cup - Bolt-On	FW-S1439011984
		5-1/2"	5/8"	30mm	Wide Cup - Bolt-On	FW-S143618009
	•	5-1/2"	3/4"	30mm	Wide Cup - Bolt-On	FW-S8008

Call for custom sizes. Steel Knurled Rollers also offered.

PATTERN & SURFACING JOINTING STONES



Fine European and American made pattern jointing stones for most high speed moulders and planers. Stones in stock, for quick delivery, along with many special application stones. Hard to find wide, long, round stones and Diamond/CBN stones for jointing carbide or ceramic knives are also available.

Resin Stones:
Best Finish Quality. React Harder.

Vitrified Stones:
Cooler Honing. More Aggressive.

	Length	Width	Thick	Grit	Color	Description / Grade	Popular Stone	Part #
Fine Grit Stones Weinig Moulders	230mm	60mm	15mm	600	Green	SC9600-G9REDM - Resin Bond USA Version (30+ Piece Quantity Discount)	●	JS-0095-U
	230mm	60mm	15mm	600	Green	SC9600-G9REDM - Resin Bond		JS-0095-E
	230mm	60mm	15mm	600	Blue-Grey	SC9600075-VUC8 - Vitrified Bond		JS-0370
	230mm	60mm	15mm	500	Dark Brown	SC5AC500 Euro-Stone Resin Bond	●	JS-2121
	160mm	60mm	15mm	600	Green	SC9 600-G9REDM - Resin Bond - USA Version (30+ Piece Quantity Discount)	●	JS-0188-U
Domestic Stones	8"	2"	3/4"	600	Blue-Grey	SCG600HZ1 Norton Optional Wax Treated		JS-0208-3T
	8"	2"	3/4"	240	Blue-Grey	* 39C240 NV Norton - H Hardness	●	PST39C240HV-02
	8"	2"	3/4"	240	Blue-Grey	* 39C240 NV Norton - J Hardness	●	PST39C240JV-03
	8"	2"	3/4"	240	Blue-Grey	* 39C240 NV Norton - K Hardness	●	PST39C240KV-01
	8"	2"	3/4"	240	Blue-Grey	* 39C240 NV Norton - L Hardness	●	PST39C240LV-06
Big & Tall	8"	2-1/2"	5/8"	240	Black	* 75C240HVS Carbide Jointing	●	JS-0507a
	12"	2"	3/4"	240	Blue-Grey	39C240LV Norton		JS-0530
	8"	3"	3/4"	240	Blue-Grey	39C240 KV Deep Profiles		JS-0500-3T
	300mm	60mm	15mm	600	Green	SC9 600-G9 Resin Wide Profiles - USA Version		JS-0680-U
	300mm	60mm	15mm	600	Green	SC9 600-G9 Atlantic Resin Wide Profiles		JS-0680
	230mm	85mm	15mm	600	Green	SC9 600-G9 RE DM Resin - Deep Profiles - USA	●	JS-0688-U
Straight Jointing	230mm	85mm	15mm	600	Green	SC9 600-G9 RE DM Atlantic Resin, Deep Profiles		JS-0688
	12mm Round			320	Blue-Grey	12mm x 1-1/2" long - Weinig Slide Jointer	●	JS-0801-E
	12mm OD		38mm	120	Dark Brown	(Red Holder) CBN Stone Brass Plug Holder		JS-0700
	12mm OD		38mm	120	Dark Brown	(Blue Holder) Diamond Stone Brass Plug Holder		JS-0700-D

* Stones for both Domestic & Weinig

Metric size fine grit, soft stones are for Weinig, Wadkin, & Leadermac moulders. Coarser, Hard stones are for Mattison, Diehl, Tri-State, and other American moulders.



Fine grit stones offer a smoother finish while coarse grit stones wear longer and are aggressive.

	Thick	Color	Grit	Hardness	Grade	Part #
Planer Stones 4" Long x 3/4" Wide	5/16"	White	80	J	38A80-JVBE	JST3125-07
		Orange	60	K	38A60-KV	JST3125-16
		Orange	80	J	38A80-JV	JST3125-05
		Orange	80	K	38A80-KV	JST3125-10
		Orange	80	L	38A80-LV	JST3125-11
	3/8"	White	80	L	38A80-LVBE	JST375-14
		Grey	60	L	32A60-LVBE	JST375-13
		Orange	80	J	38A80-JV	JST375-05
		Orange	80	K	38A80-KV	JST375-10
		Orange	80	L	38A80-LV	JST375-11
	1/2"	White	80	J	38A80-JVBE	JST500-07
		Grey	60	L	32A60-LVBE	JST500-13
		Orange	80	H	38A80-HV	JST500-02
		Orange	80	K	38A80-KV	JST500-10
		Orange	80	N	38A80-NV	JST500-28
	3/4"	Orange	120	J	38A120-JV	JST500-32
		White	80	L	38A80-LVBE	JST750-14
		Grey	60	L	32A60-LVBE	JST750-13
		Orange	80	H	38A80-HV	JST750-02
		Orange	80	J	38A80-JV	JST750-05
		Orange	80	L	38A80-LV	JST750-11

CUT-OFF, BENCH GRINDING WHEELS, & SLIP STONES

Cut-Off Grinding Wheels

Dia.	Thick	Inner Dia.	Type / Description	Part #
8"	1/16"	1-1/4"	Reinforced Cut-Off	GW-202
10"	1/16"	1-1/4"	Reinforced Cut-Off	GW-204-FALCON
12"	1/16"	1-1/4"	Reinforced Cut-Off	GW-206
10"	1/16"	5/8"	Reinforced Cut-Off / Fast Cutting	GW-101-FALCON
10"	1/8"	5/8"	Stone & Template Shaping	GW-108



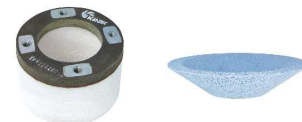
Cut knife steel, shape jointing stones, and template steel.

Bench Grinding Wheels for Hand Grinding Knives & Jointing Stones

Shape	Type	Size / Description	Part #
Cylinder	Vitrified Bond	10" dia. x 4" wide x 1" rim, nut inserts, 46 grit, J hardness	NIC104.00-03
Cylinder	Resin Bond	10" dia. x 3.5" wide x 7.5" I.D., nut inserts, 46 grit, J hardness	NIC103.50-07
Cylinder	Resin Bond	12" dia. x 4" wide x 1.25" rim, nut inserts, 46 grit, J hardness	NIC120.00-02
Cylinder	SG Blue Ceramic	10" dia. x 4" wide, nut inserts, 46 grit	NIC103.50-01
Cylinder	SG Blue Ceramic	12" dia. x 4" wide, nut inserts, 46 grit	NIC124.00-01
11 Flaring Cup	SG Blue Ceramic	8" dia. to 3.25" dia. x 1.75" wide x 1.25" bore, 0.75" rim & back, 46 grit	FLC081.75-01
11 Flaring Cup	SG Blue Ceramic	9" dia. to 3.5" dia. x 1.75" wide x 1.25" bore, 0.75" rim & back, 46 grit	FLC091.75-01
11 Flaring Cup	SG Blue Ceramic	10" dia. to 3.5" dia. x 1.75" wide x 1.25" bore, 0.75" rim & back, 46 grit	FLC101.75-01



Bench Wheels for hand grinding knives, shaping stones, deburring and balancing knives. Call for straight grinding wheel options and availability.



Rondor



Tapered Slip Stones, Wheel Dressers, & Cleaning Sticks

Description	Part #
Fine Grit Slip Stone 4.5" x 1.75" x 1/2" - Tapers to 3/16"	JS-SFSS44
Medium Grit Slip Stone 4.5" x 1.75" x 1/2" - Tapers to 3/16"	JS-SMSS44
Coarse Grit Slip Stone 4.5" x 1.75" x 1/2" - Tapers to 3/16"	JS-SCSS44
Aggressive Wheel Dressing Brick 1" x 1" x 6" Long	JS-DAS24
CBN & Diamond Wheel Cleaning Sticks	JS-SC220
German Taper Dresser Wheel 1-3/8" OD x 1-3/8" Tall w/ 6mm Threads	JS-DRONDOR
Desmond #0 Steel Dresser 1-1/4" OD x .426" Thick x 1/4" Inner Dia. (Price is for each. Sold in Boxes of 10.)	DHC11220
Wheel Holders for Desmond Dresser	DHD11210

Tapered Slip Stones are used to remove grinding burrs after profile grinding or for removing nicks on non-jointed moulders. Call for more items and sizes not listed.



JS-SMSS44

SCALES, GRINDING COOLANTS & CUTTERHEAD CLEANER

Balance Scales



Digital balance scale makes it quick and easy to cross balance knives and cutter head parts. We offer close tolerance digital weight scales, trip, & triple beam balancers for cross balancing knives and head parts to within 0.1 grams. Scales are helpful in eliminating joint or material finishing problems created from improper balancing. Save your machine spindle bearings by balancing your knives. Standard scales for balancing knives, gibs, bolts & screws, and other critical components. Call for prices on other scales.



Balance Scales

Model #	Max. Weight	Accuracy	Part #
NV2101 - Digital	2,000 Grams	0.1 Grams	OH-NV1201
SP6000 - Digital	6,000 Grams	1.0 Grams	SP6000
1450-SD Harvard Trip	2,000 Grams	0.1 Grams	S--1450-SD

2000 grams = 4.4 lbs. 1 Gram = weight of dollar bill.

Lineal Footage Counter for Moulders

Don't waste time counting stock for billing or inventory - Measure it! We offer the "TruMeter" heavy duty lineal material footage counter. Several models are offered - note if you mount to "in feed" or on the "out feed" fence side. Standard units count to 99,999 ft. These counters offer the best choice in accuracy and long term reliability.



Lineal Footage Counter

Model #	Part #
Outfeed Mounting	2400-2-33FG
Infeed Mounting	2400-2-33FC

Grinding Coolants & Bed Lubes

A safe to use, heavy duty synthetic grinding coolant for profile grinders, face grinders, and straight knife grinders. Our diverse line of coolants work very well when grinding hardened tool steels and carbide by reducing heat, inhibiting rust, reducing cobalt leaching, & reducing wheel loading. Our coolants are concentrated and mix 40:1 with water. We also offer a special additive that improves grinding finishes and extends diamond wheel life.



Bed Lube 220
6 Gallon

Grinding Coolants & Bed Lubes

Description	Part #
Grind Kool - 1 Gallon	COOLANT - GRIND KOOL
ACI Carbide Coolant 4935 - 1 Gallon	COOLANT - 4935 CARB
Kool Mist #77 Grinding Coolant - 1 Gallon	COOLANT
Bed Lube 220 - Clear - 1 Gallon	BEDLUBE-CLEAR
Bed Lube 220 - Clear - 6 Gallon Pail	BEDLUBE-CLEAR-BUCKET



Grind Kool



ACI Carbide



Kool Mist



Bed Lube 220

Saw Blade & Cutterhead Cleaner

We offer a proven saw and cutter head cleaning solution and rust inhibitor that is effective at removing pitch and resin. "Blade Clean" is safe to use in your existing soak tanks, providing a non-toxic yet very effective alternative to harsh paint & rust strippers. "Blade Clean" has been proven safe to use with Hydro-locking cutter heads Concentrate is diluted with 5 parts water. Blade Clean can also be used to clean glue & machine parts. Caustic to Aluminum.



Blade Clean Concentrate

Description	Part #
1 Gallon	BLADECLEAN
6 Gallon Pail (Makes 30 Gallons of Cleaner)	BLADECLEAN - PAIL

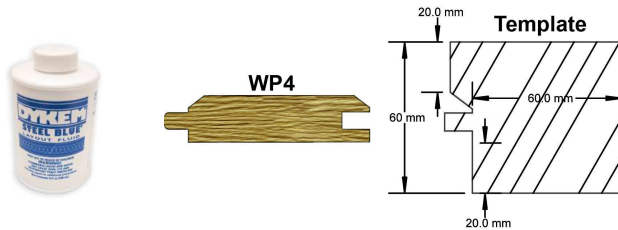
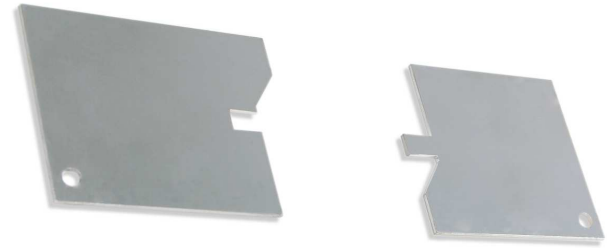
We also sell ultrasonic & heated soak tanks.



TEMPLATES & TEMPLATE SUPPLIES - MADE TO ORDER

Made to Order Templates

Short of time? Let us help by making your profile grinder templates. Send us your drawing or pattern number and we can ship most templates the next day. We offer template making steel, or ready to use pre-made custom profile grinding templates from hardened steel. Q.C. checking gages and jointing stone grinding templates can also be made to improve product consistency. Hard steel templates offer great strength and 10 times longer wear life over plastic.



Template Steel Stock

Thick	Width	Length	Description	Part #
1/16"	3"	24"	Blued Rolled Edge / 50Rc Hardened	TS-06324
1/8"	3"	36"	Square Edge D2 / 58Rc Hardened	TS-12336
Carbide Scribe Point Tool to scratch in profile				TS-S10
Dykem Blue Layout Template Dye - 8 oz. Bottle				TS-12D

Precision Measuring Tools, Gages, and Complete Tool Room Supplies

We offer nearly anything you would need to make precision moulder knives and steel templates. Our list of support supplies includes measuring gages, calipers, files, stones, and much more. We also sell inspection and measuring equipment like eye loops, certified straight edges, hook rules, precision machinist squares, shim steel, music wire, micrometers, and much more. A full line of industrial supplies; from cut proof gloves to lay-out dye, and from straight edges to a full line of safety supplies to protect your eyes and lungs when grinding. Call for more measuring tool options.



Files help shape your jointing stones to profile. Standard high quality files are offered plus we have a line of Diamond Electroplated long wearing files. Diamond files come in 3 sizes and many shapes all coated with ~ 200 grit diamond that never seems to wears out. Call for prices and details on the size you prefer.



6" Digital Calipers (.0005")



12" Digital Calipers (.0005")



Straight Edge



Measuring Tools & Tool Room Supplies

Description	Part #
6" Digital Calipers (.0005")	AP1
12" Digital Calipers (.0005")	AP2
Straight Edge for Moulder Heads / Pressure Shoes	A-PT-SE
Diamond Electroplated 5 Piece Needle Set for Fine Details	FD-69989



6" Starrett Pocket Slide Calipers
Part # MIS86425907



6" Mitutoyo Calipers

MOULDER KNIFE GRINDING PARTS & EQUIPMENT



We sell the complete line of grinders & support accessories; Profile, bench & pedestal grinders & setup stands. We can provide knife chop saws, template making equipment & optical comparators for pre-run knife inspection. In addition we provide the grinder spare parts & accessories like wheel dressers, belts, scribes and various support items to help in making moulder knives.



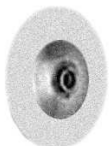
Measuring Stand Part # 230-1

Used to measure the cutter radius of profile moulder heads to preset the spindle digital counters for quicker setup.

Profile Grinder Parts

Profile Grinder Model	Grinding Wheel Hub Part #	Tool Rest Part #	Diamond Dresser* Part #
Weinig 925, 929, 930, 931, 934N, 950	GP-100WWHTB		(Smooth) GP-100-DDWS (Threaded) GP-100-DDWT
Weinig 932, 934, 935, 936, 960, 970	GP-100WWHS		(Smooth) GP-100-DDWS (Threaded) GP-100-DDWT
Nielsen / Western 130		(Steel) GP-100-FTR-S (Carbide) GP-100-FTR	GP-100-DDFN
Foley 746 (SCMI)			GP-100-DDF746
Foley 75		(Steel) GP-100-FTR-S (Carbide) GP-100-FTR	GP-100-DDFN
Jeffer 312	GP-100-JWH	GP-100-JTR312	GP-100-DDJT
Jeffer 330	GP-100-JWH	GP-100-JTR-2 GP-100-J330ATR	GP-100-DDJT-1
Item	Part #		
Weinig Filter Sheets - 19" x 15"	GP-100-F		
Weinig Diamond Dresser - Smooth Shank Multi-Point Cluster Style	GP-100-DDWS-MP		
Weinig Diamond Dresser - Threaded Shank Multi-Point Cluster Style	GP-100-DDWT-MP		
Weinig Replacement Tooth for Tool Rest	GP-100-WTC		
Weinig Tool Rest - Complete	GP-100-WTRC		

* 1/2 carat tips. Call for multi-point price.



Weinig Wheel Hubs are 140 mm Diam. - smaller diam. offered. (Weinig 931 are with taper bore & keyway & 934N type are hydro-style smooth bore).

Call for prices and details on items not listed such as profile grinder drive belts, filter socks, and spare parts.



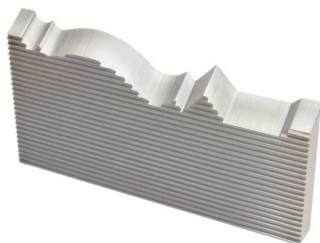
Stylus & Tracing Pins

Description	Part #
Weinig - 1mm Semi-Circular	GP-100-T1S
Weinig - 1.5mm Semi-Circular	GP-100-T1.5S
Weinig - 2mm Semi-Circular	GP-100-T2S
Weinig - 3mm Semi-Circular	GP-100-T3S
Weinig - 4mm Semi-Circular	GP-100-T4S
Weinig - 5mm Semi-Circular	GP-100-T5S
Weinig - 2mm / 3mm Round	GP-100-T23R
Weinig - 4mm Round	GP-100-T4R
Weinig - 5mm Round	GP-100-T5R
Weinig - 4mm - 45 Deg. Pt.	GP-100-T45D
Jeffer - Touret Style - 1.5mm Semi-Circular	GP-100-TJ1.5S
Jeffer - Touret Style - 2mm Semi-Circular	GP-100-TJ2S
Jeffer - Touret Style - 3mm Semi-Circular	GP-100-TJ3S
Jeffer - Touret Style - 4mm Semi-Circular	GP-100-TJ4S
Jeffer - Touret Style - 5mm Semi-Circular	GP-100-TJ5S
Jeffer - Touret Style - 1.5mm Round	GP-100-TJ1.5
Jeffer - Touret Style - 2mm Round	GP-100-TJ2
Jeffer - Touret Style - 2mm Double Round	GP-100-TJ2D
Jeffer - Touret Style - 3mm Round	GP-100-TJ3R
Jeffer - Touret Style - 4mm Round	GP-100-TJ4

Jeffer Model 312 Grinders' Pins are the same as Weinig.

Made from Hardened Alloy Steel for long wear life.

PROFILED MOULDER KNIVES



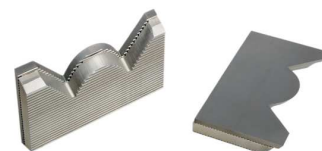
Don't have a grinder, or grinderman? No problem! We can supply precision profiled ready to run moulder knives and grinding templates from stock or within 3 days on custom profiles after drawing approval. Prices are based on the overall length of the finished knife and include the steel and grinding labor. Return template with knives that require resharpener. All Moulder knives are made 3/4" (20mm) over the wood size; 3/8" (10mm) on each side for strength. Knives are end ground square for easy axial adjusting in your corrugated heads (no gages needed to setup heads). Knives can also be sharpened in your heads for even closer knife concentricity. A minimum setup charge applies for knives under 2" long or for orders of just one knife per profile. Please note your fence side and face up / down on drawings. Send samples or e-mail wood profiles drawings.

Common Pattern Abbreviations & Terminology

T&G	Tongue and Groove
CM	Center Match (T&G centered in stock)
S1S	Surface 1 Side (Top OR Bottom of Wood)
S2S	Surface 2 Sides (Top & Bottom of Wood)
EV1S	Edge V, 1 Side (aka V1S)
EV2S	Edge V, 2 Sides (aka V2S)
E&CV1S	Edge & Center V, 1 Side (aka V&CV)
E&CV2S	Edge & Center V, 2 Sides
EB1S	Edge Bead, 1 Side
EB2S	Edge Bead, 2 Sides
E&CB1S	Edge and Center Bead, 1 Side
E&CB2S	Edge and Center Bead, 2 Sides
EE	Eased Edge radius found on lumber studs
Lap	Length of overlap in a shiplap pattern.
Reveal	Gap showing when wood pieces are assembled (aka penny gap or nickel gap)

Custom Profiled Corrugated Back Knives

Knife Length	Priced Per 1" of Length
3/4" (20mm) Over Wood Profile	2" Min. / 2-Knife Min.
Up To 2"	High Speed Steel 60° Corg.
3"	
4"	- OR -
5"	Carbide Inlay (TCT) 60° Corg.
6"	
Plastic templates of any size are same (ea.) price.	



Call for price discounts on multi-pair knife orders of the same profile and resharpener services. *Knife-Lock* and *Euro-Lock* 2pc carbide knives are profiled at a per inch price total for carbide and backer.

MADE TO ORDER

Profile examples are not to scale. Concept designs only.



T&G Flooring (NHLA)



T&G CM



T&G EV1S (WP4)



T&G EV2S



Shiplap



Shiplap EV1S



Ceiling EB1S



Ceiling E&CB1S

SAW BLADES



We offer over 450 different stock saw blades for quick delivery. Made by the finest manufacturers that have proven to exceed every expectation. Blades are made with a high nickel heat treat hardened saw plate that is laser cut and polish ground for perfect flatness. Long wearing Micro-Grain carbide teeth are brazed and ground using the latest CNC robotic controlled processing line. Each blade is inspected to ensure high quality. Blades can be modified quickly to enlarge the bore size to fit your machine spindle. Additional blades are offered for your exact requirement. Call for prices and details on custom made saws that can be produced in about 4 weeks. Large quantity discounts offered.

Saw Modifications

- Rebore - Under 2"
- Rebore - 2" - 3"
- Rebore - 3" +
- Pin Hole
- Counter-Sink Hole
- Keyway
- Rebore Dado Set
- Rebore Extra Chipper



Alternate Top Bevel ground teeth provide a fine cut in natural woods. Works well in most applications, trimming, chopping, and cross-grain cuts.



Triple Chip Ground saws provide a stronger tooth for greater life. Also for use in cutting both natural and composite woods like plywood and MDF.

PCD Tipped saw blades will outlast carbide tipped over 100 times! Great for cutting Hardiplank cement siding. Call for custom diamond saws and groovers.

Diamond Tipped Saws

Dia	Teeth	Kerf	Plate	Bore	Part #
7-1/4"	4	0.087"	0.063"	5/8"	SPRD74
8"	6	0.087"	0.063"	5/8"	SPRD86
10"	6	0.087"	0.063"	5/8"	SPRD106
12"	8	0.087"	0.063"	1"	SPRD128
12"	12	0.087"	0.063"	1"	SPRD1212

ATB General Saws

Dia	Teeth	Kerf	Plate	Bore	Hook	Part #
7-1/4"	24	.110"	.079"	5/8"	20	SB-RS72524
	40	.110"	.079"	5/8"	10	SB-GA72540
	60	.110"	.079"	5/8"	10	SB-GA72560
8"	40	.118"	.079"	5/8"	10	SB-GA840
	60	.118"	.079"	5/8"	10	SB-GA860
9"	40	.126"	.087"	5/8"	10	SB-GA940
	60	.126"	.087"	5/8"	10	SB-GA960
10"	40	.126"	.087"	5/8"	10	SB-GA1040
	40	.126"	.087"	5/8"	10	SB-GAL1040
	60	.126"	.087"	5/8"	10	SB-GA1060
	60	.126"	.087"	5/8"	10	SB-GAM1060
	60	.126"	.087"	5/8"	10	SB-GAL1060
	80	.126"	.087"	5/8"	10	SB-GA1080
	80	.126"	.087"	5/8"	10	SB-GAM1080
	80	.126"	.087"	5/8"	10	SB-GAL1080
250mm	60	3.2mm	2.2mm	30mm / 2 PH	10	SB-GAM2503060
300mm	72	3.2mm	2.2mm	30mm/2+2 PH	10	SB-GAM3003072
	96	3.2mm	2.2mm	30mm/2+2 PH	10	SB-GAM3003096
12"	48	.134"	.094"	1"	10	SB-GA1248
	60	.134"	.094"	1"	10	SB-GA1260
	80	.134"	.094"	1"	10	SB-GA1280
	80	.134"	.094"	5/8"	10	SB-GA1280P
	80	.134"	.094"	1"	10	SB-GAL1280
	80	.165"	.118"	1"	10	SB-GA1280CW
	100	.126"	.087"	1"	10	SB-TS1210
14"	40	.184"	.134"	1"	0	SB-GA1440
	60	.157"	.118"	1"	10	SB-GA1460
	60	.157"	.118"	1"	10	SB-GAL1460
	80	.157"	.118"	1"	10	SB-GA1480
	80	.157"	.118"	1"	10	SB-GAL1480
	100	.157"	.118"	1"	10	SB-GA1410
400mm	120	4.6mm	3.4mm	30mm	10	SB-GA4003012
16"	40	.185"	.134"	1"	10	SB-GA1640
	60	.165"	.126"	1"	10	SB-GA1660
	80	.165"	.126"	1"	10	SB-GA1680
	100	.165"	.126"	1"	10	SB-GA1610

TCG Triple Chip General Purpose Saws

Dia	Teeth	Kerf	Plate	Bore	Hook	Part #
7-1/4"	40	.110"	.079"	5/8"	10	SB-GT740
	60	.110"	.079"	5/8"	10	SB-GT760
8"	40	.118"	.079"	5/8"	10	SB-GT840
	60	.118"	.079"	5/8"	10	SB-GT860
220mm	64	3.2mm	2.2mm	30mm/2 PH	10	SB-GTM22064
10"	40	.126"	.087"	5/8"	10	SB-GT1040
	60	.126"	.087"	5/8"	10	SB-GT1060
	60	.126"	.087"	5/8"	10	SB-GTL1060
	80	.126"	.087"	5/8"	10	SB-GT1080
	80	.126"	.087"	5/8"	10	SB-GTL1080
	80	.126"	.087"	5/8"	-5	SB-LM1080TCG
	100	.126"	.087"	5/8"	10	SB-GT1010
250mm	60	3.2mm	2.2mm	30mm/2 PH	10	SB-GTM2503060
300mm	72	3.2mm	2.2mm	30mm/2+2 PH	10	SB-GTM3003072
	96	3.2mm	2.2mm	30mm/2+2 PH	10	SB-GTM3003096
12"	48	.134"	.094"	1"	10	SB-GT1248
	60	.134"	.094"	1"	10	SB-GT1260
	72	.134"	.094"	1"	10	SB-GTM1272
	80	.134"	.094"	1"	10	SB-GT1280
	96	.142"	.102"	1"	10	SB-GTM1296
350mm	80	3.5mm	2.5mm	30mm/2 PH	10	SB-GTM3503080
14"	54	.138"	.094"	1"	10	SB-GTM1454
	60	.157"	.118"	1"	10	SB-GT1460
	80	.157"	.118"	1"	10	SB-GT1480
	100	.157"	.118"	1"	10	SB-GT1410

SAW BLADES

Ripping of solid woods for high production. Blades can ship from inventory or rebored to fit your spindle in days. All are 20 degree hook. Call for other sizes.

Dia	Teeth	Design	Kerf	Plate	Bore	Part #
8	24	FTG	0.118"	0.087"	5/8"	SB-RF824
9	24	FTG	0.126"	0.087"	5/8"	SB-RF924
10	10	FTG	0.145"	0.102"	5/8"	SB-RF101
	24	FTG	0.126"	0.087"	5/8"	SB-RF1024126
	24	FTG	0.145"	0.102"	5/8"	SB-RF1024145
	24	FTG	0.126"	0.087"	70mm/2 key	SB-RF1024K
	30	FTG	0.160"	0.118"	5/8"	SB-RF1030
	40	FTG	0.126"	0.087"	5/8"	SB-RF1040
	40	TCG	0.126"	0.087"	3"	SB-RSLH10403
	40	TCG	0.126"	0.087"	4-3/16"	SB-RSLH10404
	40	TCG	0.126"	0.087"	4.31"	SB-RSMS1040T
12	24	FTG	0.126"	0.087"	1"	SB-RF1224126
	24	FTG	0.134"	0.094"	1"	SB-RF1224134
	24	FTG	0.126"	0.087"	70mm/2 key	SB-RF1224K
	30	FTG	0.134"	0.094"	1"	SB-RF1230
	30	FTG	0.157"	0.118"	1"	SB-RF1230160
	30	FTG	0.157"	0.118"	70mm/2 key	SB-RF1230K
	36	FTG	0.134"	0.094"	1"	SB-RF1236134
	36	FTG	0.157"	0.118"	70mm	SB-RF1236K
	36	TCG	0.126"	0.087"	3-1/8"	SB-RSM1236TA
	36	FTG	0.126"	0.087"	3-1/8"	SB-RSM1236F
	36	TCG	0.165"	0.118"	3-1/8"	SB-RSM1236TB
300mm	28	FTG	3.4mm	2.2mm	80mm/2 key	SB-RFRM30028
14	24	TCG	0.177"	0.134"	3-1/8"	SB-RSM1424T
	24	FTG	0.142"	0.102"	1"	SB-RF1424
	24	FTG	0.170"	0.118"	1"	SB-RF1424170
	24	FTG	0.170"	0.118"	70mm/2 key	SB-RF1424K
	30	FTG	0.157"	0.118"	1"	SB-RF1430
	36	FTG	0.157"	0.118"	1"	SB-RF1436
	36	FTG	0.142"	0.102"	70mm/2 key	SB-RF1436K
	40	FTG	0.170"	0.118"	1"	SB-RF1440
16	24	FTG	0.173"	0.126"	1"	SB-RF1624
	36	FTG	0.173"	0.126"	1"	SB-RF1636

RIP FTG & TCG Saws

Saw Collars & Saw Spacers

We can supply the complete package of gang rip saw spacers in steel or aluminum, and custom made saw collars to fit your existing moulder, or gang rip saw. Call for price quotes.

Warning: The use of saws on moulders requires you to have anti-kickback devices installed to prevent possible injury to the infeed operator.



Dia	Teeth	Design	Kerf	Plate	Bore	Part #
10"	30	Triple Chip	.125"	.087"	5/8"	SB-GJ1030125
	30	Triple Chip	.145"	.102"	5/8"	SB-GJ1030
12"	36	Triple Chip	.157"	.118"	1"	SB-GJ1236
	36	Triple Chip	.160"	.118"	70mm/2 key	SB-GJ1236K
	36	Triple Chip	.157"	.118"	3-1/8"	SB-GJM1236157
	50	LR LR Straight	.134"	.094"	1"	SB-GJL1250
300mm	36	Triple Chip	4.2mm	3.2mm	80mm/2 key	SB-GJRM30036
14"	36	Triple Chip	.177"	.138"	1"	SB-GJ1436177
	36	Alternate Top	.177"	.138"	2" / 1PH	SB-GJ1436DA
	36	Triple Chip	.177"	.138"	2" / 1PH	SB-GJ1436DT
16"	36	Triple Chip	.177"	.138"	2" / 1PH	SB-GJ1636
	50	Triple Chip	.197"	.138"	1"	SB-GJ1650

Glue Joint Rip Saws (GLR)

The pro-line is our lowest cost saw blade for applications where resharping is not required. Use them hard, throw it away, and put on a fresh blade. Made with the same precision equipment, but with smaller teeth and thinner plate to lower the cost. Sold in boxes of 10 blades.



Pro-Line Saws (Contractor ATB)

Dia	Teeth	Kerf	Plate	Bore	Box Size	Part #
6-1/2"	20	.073"	.051"	5/8"	10	SB-PR620
7-1/4"	24	.087"	.051"	5/8"	10	SB-PR724
	40	.087"	.051"	5/8"	10	SB-PR740
10"	36	.102"	.067"	5/8"	10	SB-PR1036
	50	.110"	.078"	5/8"	10	SB-IQ1050C
	60	.110"	.078"	5/8"	10	SB-PR1060
12"	40	.118"	.079"	1"	10	SB-PR1240
	72	.110"	.078"	1"	10	SB-PR1272
	96	.110"	.078"	1"	10	SB-IQ1296A

Dado sets include 5 center chipper blades for a total max kerf of 13/16" wide. Buy extra for wider kerfs. Call for prices on bore enlargements and for custom made sets or insert knife style.

Dado Saw Sets

Dia	Teeth	Design	Kerf	Bore	Part #
8"	24 / 2T chippers	Standard Dado Setup	0.813"	5/8"	SB-DA824
	40 / 8T chippers	Fine cutting Dado	0.813"	5/8"	SB-DA840
	40 / 8T chippers	Radial Arm Saw -2 hook	0.813"	5/8"	SB-DA840N
	41 / 8T chippers	Fine 8"	0.813"	1"	SB-DA840G
10"	42 / 8T chippers	Fine 10"	0.813"	5/8"	SB-DA104058
	43 / 8T chippers	Fine 10"	0.813"	1"	SB-DA1040

These smoother cutting saws are used for edge glued stock. Special ground teeth with 0 deg. radial clearance allows these saws to cut smoother. Bores can be enlarged to fit your spindle size. Call for other sizes of GLR blades.

Sharpening and Saw Tips: We can sharpen your saws, rebuild blades or supply the equipment and supplies to maintain your own including saw tips, flux, wheels, etc.

ACECO. & JAPANESE STYLE FINGER JOINT CUTTERS



We offer a complete line of finger joint knives for cutting joint lengths from 1/8" to 1-1/2" long in High Speed Steel, Carbide Tipped or Solid Carbide, and treated M2 steel* to extend run times between re-sharpenings. Knives are precision made by AceCo. to tolerances as close as +/- 0.0001". High Speed Steel finger joint knives are resharpened normally every 2 to 4 shifts, depending on the material density and joint length. Most knives can be resharpened several hundred times for years of grindable life. Carbide tipped knives allow you to finger joint abrasive materials like LVL, Plywood, and MDF. Finger joint knives must be properly balanced, sharpened, and posted in order to maintain a high quality finger joint. **Super strong "Micro-Joints"** save wood fiber. Just by shortening your finger joints 1/8" you can greatly reduce tear-out and save tens of thousands of dollars per year, per machine in wood fiber. Knives also offered in: Flash Chrome, Case Hardened, & RW90 Diamond Coated treatments to extend life.

ACE Co. Finger Joint Cutters

Joint Length	Cutter Thickness	Knife Tip	Knife Radius	AceCo. # Thin / Thick Knife	Other # Thin / Thick Knife	AceCo. Carbide Tip Thin / Thick Knife	Glue Area Per 1" Sq.
4mm	.100"	.038"	1.50"	AC16-237 / AC16-238	N/A	N/A	3.8" Sq.
5mm	.125"	.044"	1.50"	AC16-217 / AC16-218	BG-1392 / BG-1393	N/A	3.7" Sq.
1/4"	.139"	.047"	1.50"	AC16-104 / AC16-105	BG-1137 / BG-1138	AC16-1002 / AC16-1003	4.5" Sq.
3/8"	.1685"	.046"	1.50"	AC16-048 / AC16-049	BG-919 / BG-920	AC16-1004 / AC16-1005	4.7" Sq.
3/8"	.1775"	.063"	1.875"	AC16-052 / AC16-053	BG-967 / BG-968	N/A	4.8" Sq.
10mm	.140"	.045"	1.25"	AC16-154 / AC16-155	N/A	AC16-1009 / AC16-1010	5.6" Sq.
5/8"	.1685"	.044"	1.50"	AC16-190 / AC16-191	BG-1204 / BG-1205	-	7.8" Sq.
11/16"	.214"	.062"	1.875"	AC16-032 / AC16-033	BG-737 / BG-738	-	6.7" Sq.
.987"	.2225"	.031"	1.875"	AC16-028 / AC16-029	BG-824 / BG-825	AC16-1006 / AC16-1007	7.4" Sq.
1.113"	.2635"	.030"	2.125"	AC16-139 / AC16-107	BG-1101 / BG-1102	AC16-1001	8.4" Sq.
1.113"	.243"	.030"	2.375"	AC16-016 / AC16-017	BG-751 / BG-752	N/A	8.6" Sq.



FJ Heads



Setup Stands



Hook Grinding
Gages



Depth Gage

Wing cutters also offer an economical way to finger joint on a shaper or tenoner. Recover your shop fall down or scrap blocks & produce high value finger jointed components for as little as a few hundred dollars in tooling costs. We offer wing cutters to either produce small gaps at the ends of the joint, or closed up without a tip gap. If you are exporting your products outside North America your customers may request the tip gap option. Wing cutters provide high strength values because of their thin pitch and thin tip design. Insert knife style wing cutters are also offered. Single inserts can be replaced at a lower cost if a tip should break off. Insert style heads offer a long term lower cost option for finger jointing on larger production machines.

Japanese Style 2-Wing Cutters (Carbide Tipped)

Dia.	Thick	Bore	Joint Length	Part #
160mm	4.0mm	70mm	12mm	160X4X0.6X70-2T
160mm	4.0mm	50mm	12mm	160X4X0.6X50-2T
160mm	9.0mm	50mm	12mm	160X9X50-2T
160mm	10.0mm	50mm	12mm	160X10X50-2T

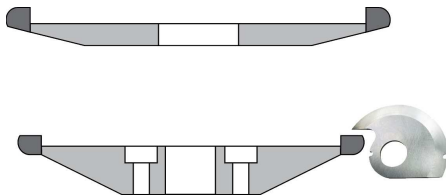
We offer AceCo. precision finger joint heads for all production finger joint machines including; IWW Industrial Woodworking, Western Pneumatics, Cader-Tech, Dimter, Grecon, Taihei, Kikukawa, Dubus, Sauter, Omega, and more. Heads from 2 to 20 knife stacks are available for production rates up to 300 blocks/min. We can supply heads with Hydro-Locking sleeves or with Cone/Collet bores for any diameter spindle. Finger joint heads can be assembled to cut a variety of joint styles including: Reversible, Male/Female, Re-saw, and Feather Joints. We offer a full selection of replacement parts for all your finger joint cutter heads. Most standard items can be delivered quickly; head nuts, bolts, grease fittings, washers, cones, index spacers, and more. We also supply safety lock collars, setup stands, hook grinding gages, and grease gun parts. AceCo. 10-Post Setup stand is used for quick reposting of cutters and are offered in 2 to 20 post configurations. Use a finger joint depth gage to make trim saw adjustments quick and precise the first time. A must for closed joints.

SIDE HEAD & FINGER JOINT GRINDING & FJ WHEELS

TITAN KNIFE

CS-1500

Automatic Cutterhead Grinder



Heavy Duty Versatile Tool Grinder

- Planer Side Cutterheads (L or LV Style)
- Finger Joint Heads
- Straight Knife Heads
- Carbide Wing Cutters

Specifications

- 4 Axis CNC Grinder
- Grinding Accuracy within 0.001"
- Grinding Capacity (Dia x W): Ø397mm (15-5/8") x 330mm (13")
- Work Table (Max): 400mm (15-3/4") Length
- Grinding Wheel Speed: 3000 RPM (60HZ)
- Grinding Wheel Motor: 5HP
- Cooling System Motor: 1/8 HP
- Work Table: Ball Screw + Servo Motor 400W
- Dividing Head Servo Motor: 400W

- Grinding Wheel Up and Down Motor: 800W
- Feeding Servo Motor: 400W
- Full Enclosure with Mist Extraction System

Standard Accessories

- CBN Wheel - 1 Pc (Ø175 x Ø17 x Ø20mm)
- Toolbox - 1 Set
- Grinding Coolant - 10 Liters
- Automatic Dividing Head - 1 Set;
- Tailstock - 1 Pc
- Cutter Spindle - 1 Pc (Ø Your Choice x 13")
- 4,000 lb Gross Weight

Support By

Machine Tech.



Pricing

Call for price and delivery.

We provide several models of face grinders for sharpening finger joint cutters and other styles of heads. We can fit the proper grinder to your exact operation. We will show you how the right grinder can save you thousands of dollars in labor costs and help keep your grinding room costs to a minimum. A precision locking work-head and knife indexing system holds the cutter head in the proper hook position when grinding. Fine grit CBN and Diamond wheels are normally used to obtain a keen cutting edge for longer tool life. We offer a complete selection of finger joint grinding equipment, and can help instruct your grinding room staff on the most efficient procedures in maintaining your tooling. Written technical information is available.

CBN & Diamond Facing Wheels

We offer many grinding wheel styles and sizes to match your existing grinder. We provide a full line of wheels with various diameters, grits, bonds, and hardness in either Aluminum Oxide, Blue Ceramic, CBN, or Diamond wheels. We can custom match the proper wheel for your needs and your specific grinder and application. Call for details. Our radius edge CBN wheel for reshaping finger joint cutters - Regrinds the knife gullets as you face grind - helps to reduce the chances of knife breakage. Use a 1/4" radius for most AceCo cutters and 1/8" radius for most Wisconsin Knife cutters. All stock wheels are 1.25" bore / 80 grit. Other bore sizes and finer grits are the same price - made to order.

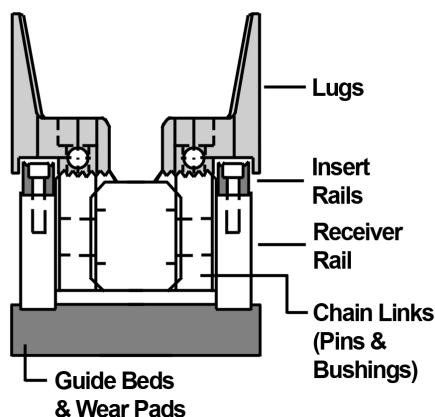


Finger Joint Grinding Wheels

12A1R Shape	1/4" Radius Part #	1/8" Radius Part #
5.5" OD (For Weinig 912 Grinders)	CB80-R-5-1/2-1/4	CB80-R-5-1/2-1/8
6" Diameter	CB80-R-6--1/4	CB80-R-6--1/8
7" Diameter	CB80-R-7--1/4	CB80-R-7--1/8
8" Diameter - Common Size	CB80-R-8--1/4	CB80-R-8--1/8
8" Norton SG Ceramic (Type 11)	Part # GW-SG8	

(Type 11 Flaring Cup Wheel - for Roughing Grinding FJ Cutters.)

FINGER JOINT MACHINE PARTS



We offer insert rails for most production finger joint systems. Most rails are offered from stock for quick delivery at a lower cost. All rails are hard chromed to help extend the scribe wear life. Custom rails with various scribe depth or sharpness are also offered for hardwoods or to reduce scribe marks on soft pines. Hard chrome costs are in flux which affect the cost of the insert rails - Call for prices.

Bed Rail Insert Bars

Machine	Length
IWW 3470	44.50"
IWW 3870	42.50"
IWW FJS25	32.50"
IWW SSS	-
IWW 3707	38.50"
IWW IWS10	36.00"
Wynot / Tri-State	30.00"
IWW 3770	24.00"
Westerns	48.00" Varies
Kikukawa	62.75"
Cader-Tech	Varies

No-Mark Insert Rails
(6 Scribes Per Rail)

Extra Tall Scribe Options
(.035" or .050" Tall)

RW90 Diamond Coated Scribes
All insert rail scribes can be diamond plated for extra long wear, this can extend life more than 2 times.

We offer all of the wear type parts including brush strips, chain guides, bed bars, insert-rails, air pressure bags, lugs, chain links, sprockets, squeeze rolls, press feet, and more are available. Spare Parts are CNC machine to OEM tolerances, but without the high OEM prices. [Chain Parts](#) / [Lugs](#) / [Insert Rails](#) We help you keep even the oldest finger joint systems running. Hardened insert bed-rails, No-mar strips, short block chains, replacement lugs, air bags, and many others are available. Parts are made to OEM specs for nearly half the cost in some cases! Offerings from stock or quick delivery on standard parts or we can custom make parts to fit modified machines.



Call for prices on our new optional Heat Treated Link. It offers twice the wear life.

Chain Link Pins & Bushings

IWW Description

3870 Corg. Steel Chain Link
3470 Steel Chain Link
Link Pin 1/2" x 2-3/8"
Link Pin 1/2" x 4"
Link Bushing-IR081212

Custom lengths and bolt slots can be made to your specs.



No-Mar Hold Downs

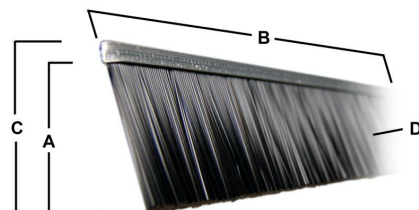
Width	Length	Thick	Description
2"	47"	0.042"	Steel - IWW 3870
3"	57-1/4"	0.042"	Steel - IWW 3470
3"	40"	0.042"	Steel - IWW FJS25



We offer solid and multi-part lugs for most finger joint systems and chains. Custom lugs can also be made if required. Most lugs can be shipped with quick deliveries.

Aluminum Lugs

Machine	Type
IWW 3470	1 Pc. - Solid
IWW 3470 / FJS	2 Pc. - Complete
2 Pc Replacement Parts - 3470's & FJS25	Lug Face, Base, Key, Nut Plate
Machine	Type
IWW 3870	1 Pc. Corg.
IWW 3707	1 Pc. Corg.
IWW SSS	1 Pc. Corg.
IWS 10	2 Pc. - Complete

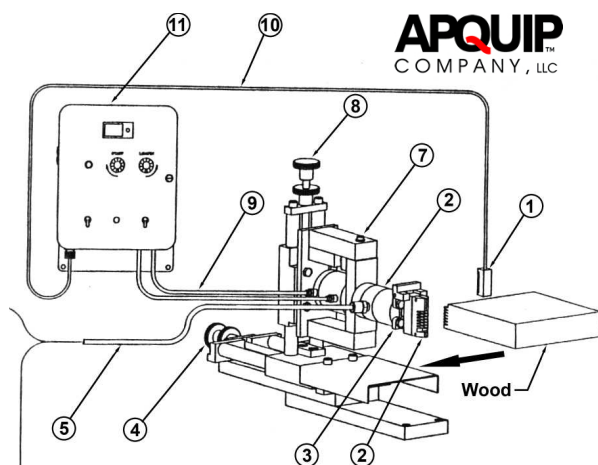


High quality standard and custom spec. block hold down brush strip bar. Standard brush strips are 3' long. Call for prices on custom sizes.

Brush Bar & Brush Strips

Width "C"	Description
2-1/2"	.034" Level
3"	.034" Level
3"	.030" Level
3" x 2" Long	Lug Loader Strip
	IWW Single Brush Holder
	IWW Triple Brush Holder

FINGER JOINT & EDGE GLUE APPLICATION EQUIPMENT



Apquip Co., Finger joint glue system for precise glue application.

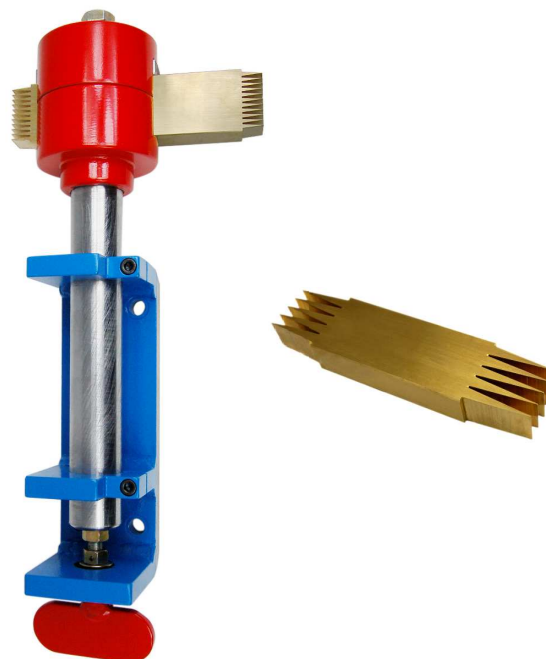
Need Precision Glue Application?

An older glue wheel system can cost you thousands of dollars to operate a year. We offer the Apquip glue application equipment for finger joint, edge, and face gluing applications. These systems are designed reliable and offer the precision control needed. New systems pay for themselves by reducing glue clean-up time and by saving up to 30% in glue consumption over roller wheels. Through efficient glue application these systems reduce wasted squeeze out and can reduce several glue joint problems common to older technology. Systems will work with most adhesives either with sealed pressure tanks or pumped from your tote. Call for details and prices on a systems.



Glue Heads

We provide the best choice in quick change glue nozzles for consistent glue application. Apquip glue heads are made from the finest stainless steel and designed for your specific joint profile and adhesive. Adjustable heads that allow the same head to glue from 4/4 to 8/4 and high capacity glue heads are also available.



Finger Joint Cutter Combs / Head Cleaner

We offer the *Beachport* head cleaners to eliminate finger joint head plugging. These head combs are designed to eliminate wood chips and wood dust from in between the knives and thus eliminate knife plugging and wood joint rip-out. Our head cleaner design uses a precision fixture that secures a brass profiled comb 100 deg. before the cut. Standard comb stands and mounts are offered for Industrial, Western, and other finger joint systems. All head cleaners are designed to pivot safely out of the dust hood if a block is sucked in. Brass combs are made to fit your thickest knife setup - up to 8/4.

Finger Joint Cutter Combs / Head Cleaner

Description

Industrial Woodworking 3470 & 3870 System
Industrial Woodworking FJS25 System
Western Pneumatic Machines
Double Sided Spare Combs

Rip-out is caused when wood packs in-between the knives. Head combs may be required. It is common with longer joints in Cedar, Hemlock, Spruce, and Redwood. Combs are made to clean in-between each knife to prevent them from spreading a part.



Global Tooling & Supply LLC
950 International Way
Springfield, OR 97477
Phone: (541) 302-1366
Fax: (978) 424-9063
www.globaltooling.com

PRODUCT CATEGORIES

MOULDER TOOLING
PLANER AND JOINTER TOOLING
HIGH PRODUCTION PLANER KNIVES
GRINDING ROOM SUPPLIES
SAW BLADES
AND MORE

www.globaltooling.com



Burton Saw
burtonsaw.com



Simonds International
simondsint.com



B.G.R. Saws
bgrsaws.com



Cut Technology
cuttech.com



Wright Machine Tools
wrightmachinetools.com



US Blades
usblades.net

© 2021 Global Tooling & Supply LLC. All Rights Reserved.